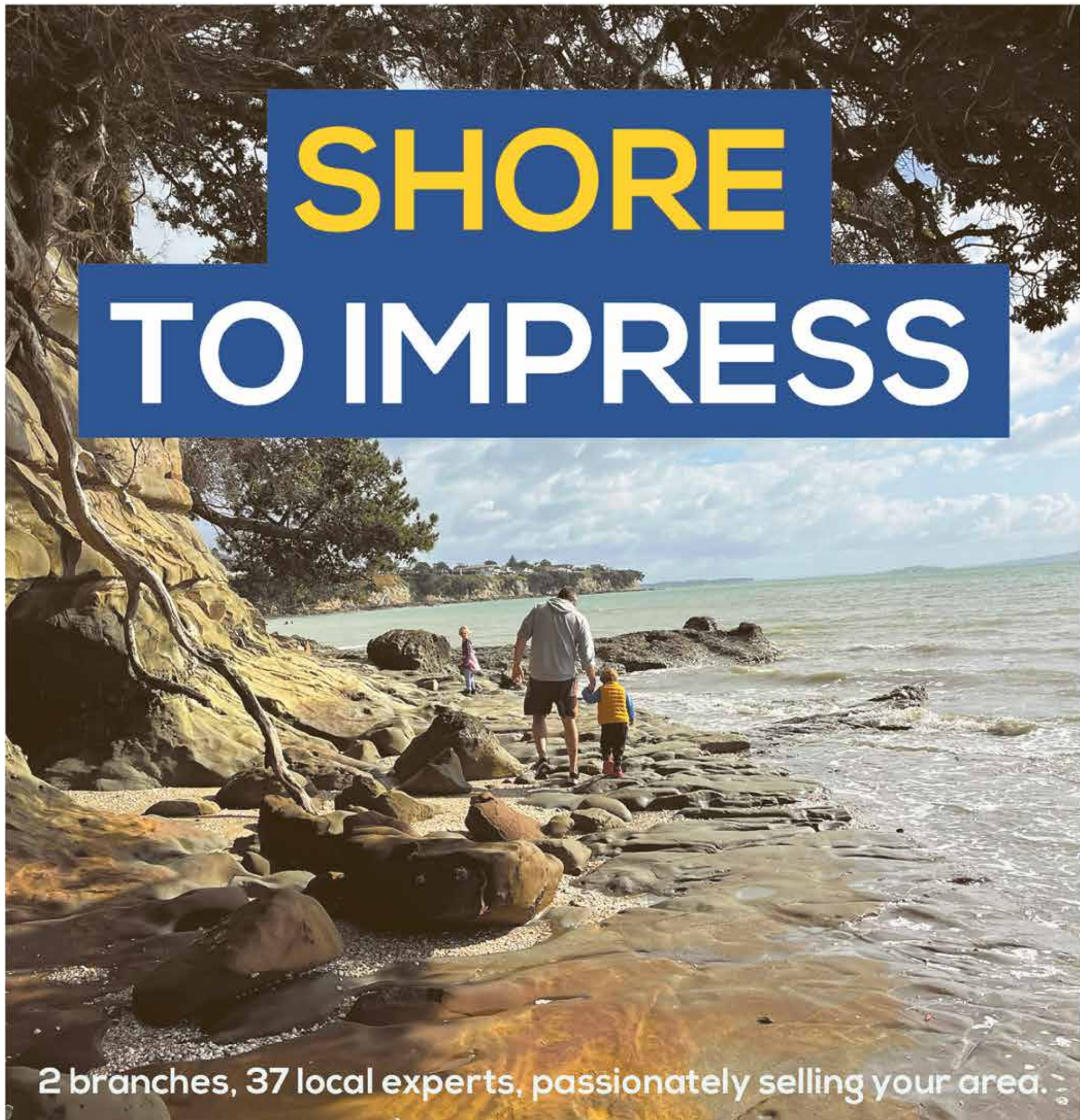


Pōhutukawa Coast Times



Issue
1509

26 January 2024



SHORE

TO IMPRESS

2 branches, 37 local experts, passionately selling your area.

Beachlands
09 536 4990

Whitford
09 530 8292

**BARFOOT
THOMPSON &**
LICENSED REA 2009



HAPPY NEW YEAR

*From the Beachlands
and Whitford teams*

For many the start of a new year is a time to reflect on the highs and lows of the year before; for others, a sign to start working towards future goals. However you start your new year, we hope that 2024 brings you happiness and success.

Almost a year to the day has passed since Branch Manager Daniel Wei put his intentions of better community involvement in this very newspaper, and Barfoot & Thompson Beachlands is striding into 2024 with the same ethos, but a year of experience behind us and a drive to keep on improving.

There's a real sense of "looking forward" as the year begins. Under Daniel's management, the Whitford team has grown in numbers and collective experience, and the addition of a true local to the Beachlands Property Management team has helped to foster that neighbourly feel. We've had the pleasure of a 'home base' hot desk in the FreeRange Works office for the team, but we can't deny the anticipation of waiting for the doors to our **newly renovated Beachlands office to open again.**

Over the last 12 months, **Barfoot & Thompson Beachlands has been involved in numerous events and community initiatives.** By way of volunteering and sponsorship, we've given back, and continued in our efforts to establish ourselves as a branch that truly cares, even outside of business. We'll be partnering with some of this same groups again this year, but we're also keen to see what other good we can do in this amazing coastal community.

Do you know of a meaningful community event coming up in 2024 that we could get involved in?

Email beachlands@barfoot.co.nz or call 09 536 4990, we'd love to hear from you.



Beachlands
09 536 4990

Whitford
09 530 8292

**BARFOOT
& THOMPSON**
LICENSED REAA 2008

26 January 2024

Chill thrills: world's fastest chilly bin record set



John Marshall built the fastest chilly bin in the world in his Clevedon shed, using the project to improve his mental health.

Clevedon now has its own version of Burt Munro. Only instead of building the World's Fastest Indian, John Marshall has built the World's Fastest Chilly-Bin!

John's home-built motorised chilly bin set a Guinness World Record in December, when it smashed the previous 70kmh record by more than 30kmh at Meremere Dragway a few days prior to Christmas, clocking a speed of 104kmh.

As well as setting a new world record, John also documented the project on YouTube, sharing the idea of hands-on creativity as a solution for people struggling with their mental health.

The father-of-three says he began tinkering in his Clevedon shed during 2020.

"I had a wobble with my mental health, just with Covid and everything. It wasn't very pleasant. I decided to take a

step back from what was going on in my head, and get back to my roots and what I love doing, making things. And it was like medicine. Massively. Not only was it getting away from the work stress, but also you're concentrating on something that does have a finishing point and it blocks out the external noise. Also you get the end satisfaction of seeing something finished."

Creating things in his shed was a huge help, says John. "It made a massive difference to my mental health. So I kept making things. I made dining room tables and chairs for the kids, then I thought 'I might start recording this stuff, because it might help someone else'. That's where the motto came

CONTINUED ON PAGE 4

VOTE SPECIAL AGENTS

Make your vote count!
Elect 003 to sell your home
Spring Deals ON NOW call...

SPECIAL AGENTS 003

Ian 027 285 9314
Jenny 0204 000 2564
Nicolette 027 702 9157
Mark 027 523 2245

BARFOOT & THOMPSON

We're here for **you** and all your property management needs!

BARFOOT & THOMPSON
PROPERTY MANAGEMENT

Beachlands
09 536 4990

RayWhite

Dedicated Property Management

*Best Value & Top Service

Call the Ray White Beachlands Property Management Team
+64 9 536 7011 / +64 21 433 052 / beachlands.nz@raywhite.com

#experiencethedifference
Licensed (REAA) 2008

MORTON TIMBER

Visit us
226 North Road, Clevedon 2248
Ph: 09 292 8656

Email: office@mortontimber.co.nz
Web: www.mortontimber.co.nz
Facebook: mortontimber.clevedon

COAST TO COAST SPECIALS

UTILITY CLAD H3.2 PLY 12MM

2400X1200 \$70 each plus gst
2700X1200 \$80 each plus gst

PREMIUM PINE DECKING

smooth 140X32
\$8.50 per lineal metre plus gst

TONGUE & GROOVE H4

140X45 @ 6m lengths
\$5.25 per lineal metre plus gst

OPENING HOURS

MONDAY - THURSDAY 7:30AM TO 5:00PM
FRIDAY 7:30AM TO 4:30PM & SATURDAY 7:30AM TO NOON
CLOSED MONDAY 29TH JANUARY & TUESDAY 6TH FEBRUARY

INSIDE: Win a double pass to the Polo p3

Watercare to make decision about Coast's wastewater p4

RayWhite.

Second Generation Real Estate
EXPERIENCE the difference...

Ray White Beachlands
Lighthouse Real Estate Limited
Licensed (REAA 2008)

P: (09) 536 7011 or (021) 400 979
E: beachlands.nz@raywhite.com
W: rwbeachlands.co.nz
A: 81 Second View Avenue, Beachlands

EmbroidMe
Uniforms & Promotional Products

SYZMIK
WORKWEAR

Clothing that works as hard as you do!

Embroidery, Printing, Lettering, Dye Sublimation and more...
Cnr Smales and Springs Rds, East Tamaki - 09 265 0300

Great Smiles. Better Health.

Offering a caring, professional service for the whole family including general, restorative and cosmetic dentistry.

(09) 292 907 | smile@ahdental.co.nz
52 Papakura-Clevedon Road
www.ahdental.co.nz

ANTHONY HUNT
Dental
GREAT SMILES • BETTER HEALTH

Deadlines: Display advertising - 5pm Thursday. Classified and News - midday Friday

advertising@pctimes.co.nz | www.pctimes.co.nz

Pōhutukawa Coast Times

GET IN TOUCH

E: info@pctimes.co.nz
W: www.pctimes.co.nz
F: facebook.com/pctimes
A: PO Box 5, Beachlands 2147

EDITOR

Leanne Chamberlin
 021 426 207
 leanne@pctimes.co.nz

ADVERTISING

Melody Cutfield
 021 0261 4467
 advertising@pctimes.co.nz

CLASSIFIEDS

advertising@pctimes.co.nz

DELIVERY/DISTRIBUTION

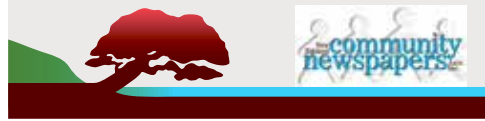
distribution@pctimes.co.nz

ACCOUNTS

Pam Rutherford
 accounts@pctimes.co.nz

The Pōhutukawa Coast Times is distributed weekly to 6500 homes and businesses in: Whitford, Brookby, Beachlands, Maraetai, Clevedon, Ardmore, Alfriston, Kawakawa Bay, Orere Point, Hunua and Paparimu

Member of the New Zealand Community Newspapers Association



The PC Times 20 years ago:
 30 January 2004: Retirement village advocates call it quits after 20 years.



Weekly Tide Chart

26 Fri	☉	2:27am ▼ 0.8m	8:54am ▲ 3.1m	🐟🐟🐟
27 Sat	☉	3:09am ▼ 0.7m	9:36am ▲ 3.1m	🐟🐟
28 Sun	☉	3:48am ▼ 0.7m	10:15am ▲ 3.1m	🐟
29 Mon	☉	4:25am ▼ 0.7m	10:52am ▲ 3.1m	🐟
30 Tue	☉	5:02am ▼ 0.8m	11:29am ▲ 3.1m	🐟
31 Wed	☉	5:39am ▼ 0.8m	12:05pm ▲ 3.0m	🐟🐟
1 Thu	☉	12:27am ▲ 2.9m	6:18am ▼ 0.9m	🐟🐟

MARINE FORECAST – VHF CHANNEL 19
 AUCKLAND FORECAST – 0900 999+ YOUR STD

Pine Harbour Electrical
 Unit 1A Pine Harbour Marina
 P: 536-6177
 W: www.phe.co.nz

Guest editorial by MP for Papakura Hon Judith Collins

A very Happy New Year, I hope that 2024 has started well for all of you and your families and communities.

Many of you will be back at work now and I hope that this year will bring success in whatever your employment or business entails.

As you may know in the last two weeks before Christmas our new National-led government got cracking with the review and reform of many pieces of legislation that are required to get our country back on track.

Of great importance was taking steps to address inflation and control costs for New Zealanders. As a priority, we passed legislation that now requires the Reserve Bank to focus solely on reducing and controlling inflation.

Since then consultations on the Labour government's Income Insurance Scheme, Industry Transformation Plans and Lake Onslow pumped hydro scheme have been stopped as part our election promises to cut unnecessary government spending.

We have scrapped the poorly named 'Fair Pay Agreements' which could have brought back the days of 1970s nationwide pay agreements and industrial action. People who have care-giver responsibilities or who have more than one job need flexibility. This also applies to Kiwi workplaces and employers

who need to improve their productivity, grow their businesses and then reward their employees with higher wages, while maintaining their workforce.

We have re-introduced the 90 day trial periods for employers and employees.

We have full support from our coalition partners – Act and NZ First - to do these as well as the support of New Zealanders who voted with the expectation we would deliver on the things we campaigned on.

Building the tech sector

As Minister of Science Technology and Innovation, I announced the provision of \$21.4 million in co-funded grants to businesses set to forge innovation pathways.

The first co-funded Ārohia Innovation Trailblazer grants are part of a new Callaghan Innovation fund supporting innovative New Zealanders with big ideas to take to market world-leading innovations.

Ārohia Innovation grants co-funding can be used for a wide range of non-R&D go-to-market activities including product and process development, and new business models.

The first Ārohia Innovation grant recipients span diverse industries and sectors from new space-bound vehicle manufacturing and in-orbit technology development, to innovative, high-tech healthcare solutions and novel carbon-reducing clean-tech

development.

New Zealand has a history of innovation starting with the first long-haul refrigerated ship equipped to transport meat to our biggest export markets to today's development of low-orbit satellite launch vehicles and the successful Fintec sector.

An independent media

I am aware that some people are concerned about media independence in New Zealand. I have spoken to people directly about it in recent months and have been advised of people's concerns through the Papakura Electorate Office, too.

In my opinion the media is an extremely important part of New Zealand's democracy and is perfectly capable of standing up for itself, as I have seen myself over many years. I am sure that our government will have a good relationship with journalists and the media and that good reporting and balanced, informative news coverage will ensure that New Zealanders want to support their local media and newspapers.

Once again my best wishes for 2024 to be happy, healthy and successful,
 Judith

The views expressed in the Pōhutukawa Coast Times Guest Editorial column are not necessarily the views of the editor or publisher.

MALMAKS WATER SHOP

CLEAN WATER

WE ARE NOW AN AUTHORISED DEALERSHIP FOR

GRUNDFOS WATER PUMPS

REPAIRS & MAINTENANCE ON ALL PUMP BRANDS

STOCK AND SELL

- Pumps • UV Lamps
- All in one pump box
- Carbon & Sediment Filters
- Salt • Bore Softeners

PH: 530 8872

Whitford Village

www.malmakswater.com.co.nz

- DAB • GRUNDFOS • GREENWAY • VIQUA
- ATLAS FILTRI • ALPINE PURE • STERILIGHT
- PURETEC • DAVEY • HANSEN

SERVICING POHUTUKAWA COAST FOR OVER 10 YEARS

Read online

www.pctimes.co.nz

Pohutukawa Coast PRESBYTERIAN CHURCH
 "A Voice of Positive Christianity"

"Be brave to stand for what you believe in even if you stand alone."

- Roy T. Bennett -

Every Sunday 9am

Plus Kids' Programme

Minister: Mark Chapman

For more information contact Lyn:
 lyn.41buchanan@gmail.com

Playgroup Tues & Wed 9am - 12pm

Food bank 027 304 4998 Phone or text

5 Jacobs Way, Maraetai

SUTCLIFFE MATSON LAW

LAWYERS SERVING THE POHUTUKAWA COAST

38A Wakelin Road, Beachlands
 Available Monday - Friday, by appointment

photo credit: Tio&Co Photography

BREANNA FULLER AND **BRADEN MATSON**
BCOM/LLB (HONS) | ASSOCIATE MA/LLB | DIRECTOR

Conveyancing, Refinancing, Wills,
 Powers of Attorney, Business Transactions
 Family & Commercial Law
 and other general legal needs.

We are happy to meet after hours
 at your home for your convenience.

Ph: 09 279 8351 or Braden: 021 327 030
 braden@smlaw.net.nz | breanna@smlaw.net.nz
 www.sutcliffematsonlaw.net.nz

PRIMA COLLISION REPAIRS

Complete panelbeating and car painting

East Tamaki: Unit B 154 Harris Rd, East Tamaki, Auckland 09 274 4778
 Manukau: 2/117 Kerrs Rd, Manukau, Auckland 09 268 9340

Country's hottest polo tournament returns to Clevedon

The country's top polo event returns to Clevedon on Sunday 18 February at Auckland Polo Club. Regarded as the Polo World Cup of Australasia, the 47th NZ Polo Open is the nation's biggest and most competitive tournament.

Six teams will compete from 13 February with the aim of securing their place in the final.

A crowd of over 4000 spectators will watch Aotearoa's polo talent taking to the field alongside professionals who fly in for the event from polo hubs Argentina, England and Australia.

Off-field there will be plenty of action. In a test of horsepower Archibald & Shorter Auckland will put their top car to the test against one of the polo ponies, in the annual Car v Horse race. For those quick on their feet to test their own horsepower, there will be 100m dashes on the polo field with the fastest awarded for their speed.

It wouldn't be a NZ Polo Open without the stylish putting their best foot forward, with a chance for the best dressed to win some great prizes.

For the stars of the show, the polo ponies, NZ Polo Open has joined with 'Love Racing NZ' in a special animal welfare and rehoming collaboration and the best playing rehomed thoroughbreds

will be rewarded with prize money. The tournament will see over 100 thoroughbred horses on the field who have found their second careers in polo. The unique ability and flexibility of this athletic breed is what makes New Zealand polo ponies so revered on the global stage and regarded as the best in the world.

This year the refreshments will have an international edge with NZ Polo Open partnering with two renowned European brands. With a Spanish twist and for guests who enjoy a refreshing beer, America's Cup and Emirates Team NZ partner Estrella Damm will be on offer. From Provence, Whispering Angel - the world's number one luxury rosé brand - will be the rosé of the event and host to the chic 'Whispering Angel VIP Polo Club.'

"We are very much looking forward to our event next month. The work behind the scenes over the past 12 months is going to deliver a fantastic international polo experience," says NZ Polo Open executive director Lucy Ainsley.

"We have some exceptional polo teams with some great overseas players. Our partners for 2024 are involved with the top polo events throughout the world. Sunday 18 February could possibly be the best day of summer!"

WIN A DOUBLE PASS TO THE NZ POLO OPEN

Join the fieldside fun on Sunday 18 February!

The PC Times has a double pass to the NZ Polo Open to give away to one lucky reader. Simply email info@pctimes.co.nz with 'Polo' in the subject line, and let us know your name and phone number. Entries close 5pm Friday 2 February 2024.



CLEVEDON PUMPS & FILTRATION

Servicing Clevedon & surrounding areas for over 10 years

- New Installations and Maintenance of all Pump & Water Filter Brands
- Specialist Bore Pump Repairers & Installations

Contact: Geoff Peck 0274 797 741 | geoff.peck@clevedonpumps.co.nz

Shining Some Light

Don't waste another year in a maze or in the dark and going nowhere.

There is a plan for your life and you were carefully created for a purpose.

To discover it you need to find Jesus.

SO DON'T MISS OUT - CHECK HIM OUT 😊

Howick FUNERAL HOME

New Zealand owned & operated since 1993

A privilege to care for your family

Every life is special, we understand that. Let us pay tribute to the life of your loved one and celebrate the unique way they have touched you, your family and those around you.



For a personal, professional service contact us today to discuss your options:
35 Wellington St, Howick | Phone 534 7300 | www.howickfuneralhome.nz



Honouring and Celebrating Life

Our approach, philosophy and high standards are ideals we are proud to uphold. Our compassion, values and dedication when caring for the bereaved are just a few of the qualities that form the heart of Resthaven Funerals.



HOWICK. Cnr Picton & Walter MacDonald Sts | Ph. 533 7493
MANUREWA. 88 Great South Rd | Ph. 267 2530

www.resthavenfunerals.co.nz

MEMBER Funeral Directors ASSOCIATION OF NZ

Shed time results in new record for world's fastest chilly bin

CONTINUED FROM PAGE 1

from for my YouTube channel - 'Get out of your head, and into the shed'."

John says his shed provides the perfect antidote to his day job in sales. "You can come in here, it's quiet, you can talk to your mates, have a beer and make stuff. And it's just the best feeling ever, I absolutely love it. It's so good to sit back and say 'look what we did'."

John says many of his friends got on board with the shed projects, and that it gave some of them a safe space to talk about their own struggles with mental health.

After building tables, benches and other items, John set his sights on a bigger project. "I thought, why don't I build something that's very extreme, to show people that you don't have to be qualified at anything? You've just got to have a crack and try and do something. So that's why we came upon the idea of the world record, and we thought the chilly bin was appropriate to New Zealand."

The main criteria for the world record was that the chilly bin had to be functional, and resemble a motorised cooler that you could buy off the shelf. A Kawasaki Ninja 300 motor was set behind the chilly bin, powering the mostly custom-built frame. Things did not always go according

to plan. A test run shortly before the world record attempt saw John roll the cart, damaging the frame and steering mechanism and leaving John grazed and sore.

It was a blessing in disguise, he says. The accident prompted the team to construct a new steering mechanism which offered better handling.

The actual world record attempt at the Meremere Dragway was "terrifying", admits John. "I could've gone faster, its max speed is about 130kmh, but 104kmh was scary enough."

He says all those involved in building the chilly bin are "absolutely chuffed" with the world record.

"The boys have absolutely loved it. Rather than going to a bar or just having beers, we're actually doing something."

After featuring on television and radio, the team of shed mates was donated a brand new golf cart and new engine so that they can have a go at building the world's fastest golf cart. Currently the world record sits at just under 119kmh.

The team will help fund the golf cart project by selling merchandise such as t-shirts on John's fast-growing YouTube channel and Facebook page 'Marshall Makes'.

Watercare to announce Beachlands wastewater plans next month

Watercare hopes to announce its final plans for the new Beachlands Wastewater Treatment Plant discharge location next month.

Over the last three months, Watercare has held several community drop-in sessions at the Te Puru Community Centre to present various options for a new wastewater discharge location.

Watercare resource consenting manager Tanvir Bhamji says these sessions also gave the opportunity to discuss upgrades to the Beachlands Wastewater Treatment Plant that are required to meet proposed population growth over the next 30 years.

"During these sessions, people were able to share their thoughts and give us feedback on the presented options at the meeting or in their own time through our website.

"Initially, we hoped to confirm the best practical option for a new discharge location before Christmas.

"However, we needed more time to ensure we've taken onboard all community feedback, technical information and the views of mana whenua."

The five options being considered by Watercare are summarised below (a full description is available at watercare.co.nz

- search for Beachlands):

- **Option 2A:** Wastewater is treated at the existing Beachlands Plant site then discharged to a tributary of the Te Puru Stream, via an overland flow discharge field covering about 4-6ha
- **Option 2B:** Wastewater is treated at the existing Beachlands Plant site then discharged directly into a tributary of the Te Puru Stream
- **Option 3:** Wastewater is treated at the existing Beachlandst Plant site, stored in a lagoon then discharged via low pressure sprinkler irrigation to 750ha of land within a 10km

radius of the treatment plant

- **Option 3a:** Wastewater is treated at the existing Beachlands Plant site then discharged into a tributary of the Te Puru Stream as well as being spread via low pressure sprinklers to 300ha of surrounding land
- **Option 4ae:** Wastewater is treated at the existing Beachlands Wastewater Treatment Plant site then carried via a pipeline to Te Puru Park, before being discharged via a 2.9km ocean outfall [pipeline] into the Tāmaki Strait



giving you one more reason to smile



smile dental
Beachlands
We are open!





NEW PATIENTS WELCOME
QUALITY AFFORDABLE FAMILY DENTISTRY

Smile Dental is New Zealand's largest dentist owned dental group with 17 modern innovative clinics in Auckland and Palmerston North.

- | Free Exam* | Free ACC & Social welfare quotation |
- | Free adolescent dental care | White Fillings |
- | Crowns | Veneers | Dental Implants | Invisalign |
- | Wisdom tooth surgery | Botox & dermal Filler |

FREE CHECKUP
AND
WINZ QUOTATION

Address:
129 Beachlands Rd,
Beachlands
Auckland

www.smiledental.co.nz  09 302 0808

| Albany | CBD | Henderson | Avondale | Te Atatu | Ranui | Remuera | Onehunga | Sylvia Park | Mangere | East Tamaki | Somerville | Beachlands | Manukau | Takapuna | Papakura | Palmerston North |

Soar Auckland's skies in a classic DC-3!



Take an amazing step back in aviation history & soar Auckland's skies on the majestic warbird the 1945 Douglas DC-3, 'Kaitaia' with Air Chathams.

Departing on select weekends from January through to March 2024, at the domestic terminal at Auckland Airport.



0800 FLYNOW
airchathams.co.nz



QUAL MARK



Your family in the sky
to whanau i te rangi

Biosecurity non-compliance puts cycle trail at risk of closure

Access to the recently opened Hūnua Traverse cycle trail is at risk, due to cyclists not cleaning their gear before entering the Hūnua Ranges.

Riders of the Hūnua Traverse NZCT Heartland Ride are being asked to prioritise biosecurity compliance, or risk having their access restricted.

Strict kauri dieback disease prevention rules in the Hūnua Ranges Regional Park require all cyclists to follow three simple rules; clean before you come, sterilise your bike and gear at the hygiene stations, and stay on track.

Kauri dieback disease, or *Phytophthora agathidicida*, is a fungus-like pathogen that infects and kills kauri and which has wreaked havoc on populations in Northland, the Waitākeres, the Coromandel and on Great Barrier Island.

Southern Regional Parks principal ranger Trent Taylor says the Hūnua Ranges are home to the largest kauri forest in New Zealand that remains free of the insidious kauri dieback disease.

“Unfortunately low compliance with our biosecurity requirements is putting this population at risk.”

During the limited preview opening of the Hūnua Traverse, between July and December last year, just 70% of cyclists complied with hygiene station requirements, making them the worst performing user group.

“If we don’t see the compliance rate lift



to above 90%, some tough decisions are going to have to be made about whether cyclists should continue to access the park,” says Trent.

To support compliance, a new Kaitiaki Champions Programme launched over the busy summer holiday period. This program has seen biosecurity ambassadors stationed at hygiene stations sharing information about the importance of biosecurity measures and ensuring visitors comply.

Cameras located at each hygiene station have picked up a slight increase in compliance over December and January, but Trent Taylor says he’s not counting chickens just yet.

“Over summer we see lots of our regular local users head away on holiday. This, coupled with lots of first-time visitors who seem to be more diligent at following our

instructional signage, we expect to see higher compliance rates,” he explains.

Franklin Local Board Chair Angela Fulljames says that cyclists need to respect that access is a privilege, not a right.

“Unfortunately a small number of riders who aren’t complying risk ruining it for everyone,” she warns.

“Auckland Council has invested significantly into kauri protection initiatives, including diverting trails away from kauri, building raised boardwalks, fencing off at-risk trees and constructing kauri dieback hygiene stations at every entry point to the park. But these initiatives are only effective if people comply with requirements of cleaning and sterilising their bikes and gear and staying on track.”

Compliance officers can fine and trespass any users who don’t comply with the rules.

“Non-compliance has serious consequences including fines of up to \$20,000 and a Trespass Notice, which would exclude recipients from the Regional Park for up to two years,” says Trent.

Trent acknowledges that the hygiene stations can be tricky to use with long or heavy bikes, but says that with five different entry points for cyclists and no access to running water at these points, the hygiene stations are fit for purpose.

“Riders travelling through the Upper Mangatāwhiri Valley and past the Bike

Skills Area are travelling through one of the highest risk areas in the park for picking up Kauri Dieback Disease. With hundreds of vehicles and visitors travelling into this area from across Auckland every week, we need to ensure that every single person who walks or rides through this area then goes on to sterilise their shoes and bike.”

Remember the three simple rules; clean your bike before you visit the Ranges, sterilise at the hygiene stations and stay on track.

Hon Judith Collins MP for Papakura

Roselands Shopping Centre,
98 Great South Road,
Papakura

09 299 7426
judith.collinspapakura@parliament.govt.nz
judithcollinsmp



VISIT OUR EXCITING NEW SHOWHOME

11 Munro Oak Lane, Clevedon
(opposite the showgrounds)

Open Thur, Sat & Sun 11.00am – 2.00pm

G.J. Gardner Homes are acknowledged for their innovative design concepts. Our designers are continually coming up with fresh ideas and creative living plans. Here’s your chance to view some of their latest ideas incorporated into this stunning showhome.

If you’re thinking of building and are looking for ideas and inspiration, make this your first step.

09 274 2082 / gjgardner.co.nz

G.J. Gardner. **HOMES**

Lifestyle

SPONSORED CONTENT

Discover the Te Puru Community Centre - something for everyone!

- by Te Puru Community Centre

The Te Puru Community Charitable Trust was formed by the then Manukau Council in 2002 to complete and run the Centre. Forming part of the Auckland Councils Facilities Network, 33% of the Trust's funding comes from the Auckland Council Facility Operating grant.

The remaining funding required to operate the facility, about \$200,000, comes from affiliation fees, clubrooms usage, school holiday programme, food and beverage sales, room hire and general usage.

A thriving hub located in the heart of the Pohutukawa Coast, the Te Puru Community Centre offers a diverse range of sports and recreational activities for the local community.

Our weekly timetable features exciting activities for all ages, including Gymnastics, Jumping Juniors, Badminton and Table Tennis, Mahjong and Rummikub, and Pilates with Judith. Whether you're a beginner or an expert, our classes are open to all. While Badminton and Table Tennis are free, we keep all other club fees affordable.

Payment and concession cards can be obtained from the main office.

For older adults, the Senior Circuit is a popular class that focuses on maintaining muscle, balance, mobility, and social connections. On the first Wednesday of every month, the class is followed by a Senior Social morning tea.

If you're looking for the perfect spot to host your child's birthday party, Te Puru Community Centre has you covered. With ample space, our birthday packages include a party room, gymnastics or sporting equipment, a bouncy castle, and a stereo system.

In addition to hosting events and classes, our venue spaces are also ideal for private functions, meetings, workshops, and exhibitions. With a Grade A kitchen onsite and a fully stocked bar, we have everything you need to make your event a success.

For Te Puru news, Gymnastics and our 2024 Holiday Programme, be sure to follow us on Facebook: Te Puru Community Centre.

For our Term 1 Timetable and class registrations, go to www.tepuru.co.nz



TE PURU 2024 TIMETABLE

Monday	Tuesday	Wednesday	Thursday	Friday
Jumping Juniors 11 - 11.45am 1 - 4 years old \$105 / term	Badminton 9.30 - 11am Play for free	Senior Circuit 9 - 10am Casual \$7 / 10 for \$60	Pilates 10 - 11am Casual \$13 / 10 x \$100	Senior Circuit 10 - 11am Casual \$7 / 10 for \$60
Gym Skills 5-6 years 3.30 - 4.30pm \$140 / term	Rummikub 1 - 4pm Play for free	Senior Social 10am First Wednesday of the month	Jumping Juniors 9.15 - 10am 1 - 4 years old \$105 / term	
Parkour 4.15pm 7+ years 5.00pm 10+ years \$189 / term	Table Tennis 1.30 - 3.30pm School term only Play for free	Mahjong 10am - 12pm \$2	Gym Skills 5-6 years 4.00 - 5.00pm \$140 / term	
Gym Skills 5-8 years 4.30 - 5.30pm \$140 / term	PCBC Basketball 4 - 9pm 6+ years - adult \$60 / term	Badminton 10am - 12pm Play for free	Beginner Tumbling 5-6 years 4.00 - 5.00pm \$140 / term	
Beginner Tumbling 5-6 years 4.30 - 5.30pm \$140 / term	Parkour 4.15pm 7+ years 5.00pm 10+ years \$189 / term	Parkour 5pm 10+ years \$189 / term	Parkour 5pm 10+ years \$189 / term	
Gymfest 8+ years 5.30 - 6.30pm \$140 / term			Gymfest 7+ years 5.00 - 6.00pm \$140 / term	
Yoga 6.00 - 7.00pm TO BE CONFIRMED Casual \$20 / \$160 term			Intermediate Tumbling 7-8 years 5.00 - 6.00pm \$140 / term	
Badminton & Table Tennis 7.30 - 9.30pm Casual \$7			Advanced Tumbling 9+ years 6.00 - 7.00pm \$140 / term	

Lifestyle

SPONSORED CONTENT

Franklin Vets' tips to keep your pets happy and healthy this summer

- by Franklin Vets

As the temperature continues to rise, pet owners need to be mindful of the potential risks that summer can pose to their furry companions. Here are some essential tips to ensure the safety and well-being of your pets during the hot season.

Firstly, hydration is crucial. Just like humans, pets can suffer from dehydration in hot weather. Ensure that your pets have access to fresh, clean water at all times. Consider placing multiple water bowls in different areas of your home and backyard. You can add ice blocks into water bowls to ensure your pet's water stays cool throughout the day.

Secondly, be cautious of hot surfaces. Pavements and roads can become scorching in the summer sun, leading to burnt paws. Walk your pets during cooler parts of the day or on shaded paths to minimize the risk. Place the back of your hand on the pavement, if you can't hold it there for five seconds

then it is too hot for your dog to walk on.

Protect your pets from the harsh sun by providing shade in your yard. This can be natural shade from trees or structures like umbrellas or pet shelters. Additionally, limit outdoor activities during peak sunlight hours to prevent overheating. If your pet has pink skin, especially on their nose or ears, then be sure to put pet-friendly sunscreen on them.

Never leave your pets in a parked car, even for a short period. The temperature inside a parked car can escalate rapidly, leading to heatstroke and even death. If you need to pop out, leave your pets at home in a cool, shaded environment.

Lastly, be aware of pests. Summer is prime time for fleas, ticks, and mosquitoes. Consult with your veterinarian to establish a suitable prevention plan for your pets.

By following these precautions,



you can ensure that your pets stay safe and comfortable during the warmer months. And, if you have any questions, please call our friendly team at 09 538 0010.

FENCING CONTRACTORS ASSOCIATION OF ZEALAND
Registered Fencing Contractor No. 702

ph: (09) 2928 064
mob: (0274) 957 868
Fax: (09) 2928 063
TDWKKC@xtra.co.nz

428 Kawakawa Bay Rd
Clevedon
RD5 PAPAURA

WHITE FENCING

0800 957 868

TONY WHITE

ALL TYPES OF RURAL FENCING & ASSOCIATED WORKS



CONSULTATION | DESIGN | BUILD

Creating Beautiful **BESPOKE KITCHENS** For The Past 25 Years

We are a family run business offering the highest quality design, manufacturing and installation solutions for both residential and commercial clients.

Here at LaBella Kitchens our approach is always 'quality first', whether we are creating a vanity, bespoke furniture pieces or a kitchen, your cabinetry will stand the test of time.

Come and see the team instore or contact us to arrange an in home consultation.

249 Moore Street, Howick
09 533 7183

labellakitchens.co.nz
@labella_kitchens



Our services for your pet

Our **BESTPRACTICE** Beachlands clinic offers:

- Health checks and nail trims
- Vaccinations
- Free Nurse dental and weight checks
- Acupuncture
- Elective, emergency and exploratory surgery
- Dental procedures
- Post-operative intensive care, oxygen, fluids, X-rays and blood testing all on site if required



BESTPRACTICE
ACCREDITED CLINIC

WINNER
NZVA Veterinary Business Excellence Award 2023

Cat Friendly Clinic

1/43 KOUKA RD, POHUTUKAWA COAST SHOPPING CENTRE
PH 538 0010 | BEACHLANDS@FVS.CO.NZ
@FranklinVetsPets @FranklinVets
Book online @ WWW.FRANKLINVETS.CO.NZ
Open hours: Mon-Fri 8am-6pm, Sat 9am-3pm

FOOD & ENTERTAINMENT GUIDE

4 Traditional Pizzas and 4 Sides DELIVERED from \$59.90 ONLINE CODE 22861* **Open: Sun-Thu 11am-9:30pm**
 *T&Cs apply. **Fri & Sat 11am-10pm**
Ph: 0800 30 40 50 or 09 951 3959
 www.dominos.co.nz
 E: beachlandsdom@gmail.com




THAI PASSION
Beachlands



THAI PASSION BEACHLANDS
RECOMMENDED BY RESTAURANT GUIDE NZ
LUNCH Special
\$15.90

THAI RESTAURANT
 3 days Lunch Thu-Sat 12-2:30pm
 6 nights Dinner Tue-Sun from 5pm till late
 Online Order: onlineorder.me
 www.thaipassion.co.nz
 09 218 3888 | 45 Wakelin Road, Beachlands




DINING • WEDDINGS • FUNCTIONS
 424 Creightons Rd, Clevedon, Auckland 2582
 PH 09 292 8845 • enquiries@vinalto.co.nz
 OPEN: Thur and Fri 5pm - late
 Saturday 12pm - late, Sunday 12pm -4pm



THE FRANKLIN
TAPHOUSE & KITCHEN

Open 7 days from 12pm-late
 Woodfired pizzas
 Fri/Sat/Sun 12pm-late

BOOKINGS RECOMMENDED
Ph: 536 5978
www.thefranklinpub.co.nz



(09) 536 4151
 Monday to Friday 10:00am - 11:00pm
 Saturday & Sunday 8:00am - 11:00pm
 44 Third View Ave, Beachlands
 The best of European Cuisine



SUNKIST
BAR • KITCHEN

OPENING HOURS
 Tuesday - Thursday: 3-10pm
 Friday - Sunday: 12pm till late
 027 208 6942
 190 Jack Lachlan, Pine Harbour

Small sharing plates
 Cocktails
 Marina view

HALLERTAU CLEVEDON
 26 CLEVEDON-KAWAKAWA RD, CLEVEDON, AUCKLAND — CLEVEDON@HALLERTAU.CO.NZ — 09 869 2989
 OPEN — MON & TUE: CLOSED — WED & THU: 4PM-10PM — FRI & SAT: 12PM-10PM — SUN: 11AM-9PM



Pōhutukawa Coast's only not-for-profit Chartered Club since 1948
 Open 7 days a week
 Mon & Tues 4pm-Late
 Weds-Sun 3pm-Late

2 Weekly Membership Draws
 Fishing and 8 Ball Section
 Fortnightly Quiz Nights
 Free Pool & Darts
 Kids Room
 Gaming Lounge
 Free* Function Hire

ADVERTISE IN OUR FOOD & ENTERTAINMENT GUIDE, JUST \$20/WEEK. EMAIL ADVERTISING@PCTIMES.CO.NZ



AUCTION

157 Maraetai Drive, Maraetai

Discover the perfect blend of coastal living and income potential. A true representation of the classic Kiwi Bach, the main home consists of 2 bedrooms and 1 bathroom. It not only offers comfortable living but also promises an additional income stream, with a minor 2 bedroom dwelling located at the back of the property; making it an exceptional opportunity.

Immerse yourself in the laid-back charm of Maraetai, relish the beachside living and seize the chance to own a property that embodies the quintessential New Zealand coastal experience.

rwbeachlands.co.nz/BCH30807
 Lighthouse Real Estate Ltd Licensed (REAA 2008)

4 2 2 2 809

Auction
 The Shed @ Ray White Beachlands
 6:00 pm Wednesday 30 January 2024
 (Unless Sold Prior)

View
 Saturday & Sunday
 12:00 - 12:30 pm



Brianne Bignell
 021 400 979
brianne.bignell@raywhite.com



Paula Kirkman
 021 0290 8007
paula.kirkman@raywhite.com

WHY WAIT?



Kinghans Accountants & Advisers.
also trading as Louw & Co.

**your local
accounting
company**

SWITCH TO XERO WITH US

**Xero can transform your
construction business**



- Quote and invoice on the go
- Check on your cash flow any time
- Simply track jobs, costs and profitability

Get in touch with us today to start a free trial.



22 Picton Street, Howick | Ph: 09 533 8420
Email: info@louwandco.co.nz | www.kinghans.co

Classified Ads (continued next page)

BUY/SELL

JEWELLERY WANTED TO BUY

Old gold, rings, broken chains, unwanted jewellery for scrap etc. Paul Taylor Jewellers, Shop C7 Pohutukawa Coast Shopping Center. Ph 536 4200

WORK WANTED

PAINTING/PLASTERING

Interior and exterior quality painting. Refs available. Ph: Gary 021 90 30 20 or 536 6358.

WORK WANTED

RENOVATIONS

Bathrooms, kitchens, toilets - build, tile, glass, flooring, plaster and paint. Start to finish. Exp. builder. Refs avail. Ph: Gary 021 90 30 20 or 536 6358. Oakes Build Landscape Maintenance. www.oakes.nz.

READY GRASS/LANDSCAPING

Specialising in ready-grass, seeding, lawn levelling, turf cutting & landscaping. Locally based Ph: Adam on 022 015 2805.

WINDOW CLEANING

Windows in/out, exterior house wash, gutter clearing. Exp operator, Ph: Keith at Panoramics on 0272 453 444 or 530 8136.

MOWER AND CHAINSAW REPAIRS

All small engine repairs, mowers, ride-on mowers, chainsaws, weedtrimmers, & chain saw sharpening. No job too small. Free pick-up local area only. Ph: 536 5621 or mob 027 308 7777.

HANDYMAN

You name it... renovations, DVS installation, gardening, retaining, fencing, landscaping, trellis, light building and maintenance work. Ph Gary on 021 903 020 or 536 6358.

PROPERTY FOR RENT

AJJ Property Management



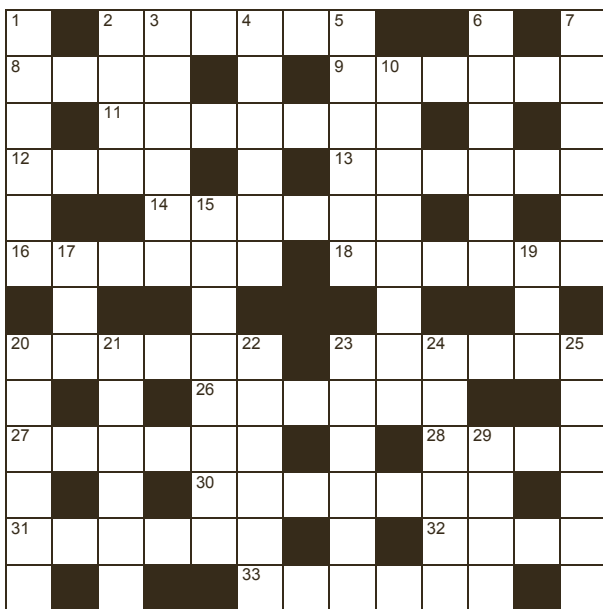
9 Pohutukawa Road, Beachlands, Manukau City, Auckland

- Section size 1416m2
- 5 bedrooms
- 3 lounges
- Separate dining
- 3.5 bathrooms
- Garden maintenance by the owner

With the stunning ocean view and sensational interior design style, this 5 bedroom clifftop house delivers a superior standard of comfort and lifestyle spaces.

For inspection please call **021 633 558**

RAYWHITE BEACHLANDS CROSSWORD



Brianne Bignell
021 400 979
brianne.bignell@raywhite.com

RayWhite.

Across

- Heartbreaking (6)
- Allocated space (4)
- In this matter, document (6)
- Take a break (7)
- Not in favour of (4)
- Excessively (6)
- Take as read (6)
- Slender and elegant (6)
- Pass (6)
- Brand (6)
- Cheerful (6)
- Push forward (6)
- Sword (6)
- Pledge (4)
- Debonair (7)
- Feed up (6)
- Beloved (4)
- Named with status (6)

Down

- Hound (6)
- Nipple (4)
- Type of tyre (6)
- Complain pettily (6)
- Shiny, decorative finish (6)
- Become weepy (4,2)
- Protein (6)
- Enfold (8)
- Run in panic (8)
- Tank (3)
- Briny (3)
- Trouble (6)
- Attribute to someone (6)
- Unadulterated (6)
- Eventual outcome (6)
- Fair-haired (6)
- Summer top (1-5)
- Elderly (4)

Answers on page 10



BEACHLANDS MEDICAL CENTRE

PH: 536 6006

Mon 8.15-5.00 **Tues** 8.15-7.30

Wed 8.15-5.00 **Thur** 8.15-5.00

Fri 8.15-5.00 **Sat/Sun** CLOSED

No late nights during school holidays & closed statutory holidays. Hours may vary please check our Healthpoint website.

**Book appointments online at
managemyhealth.co.nz**

Doctors:

- Dr Nigel Brown
- Dr Michael Clarke
- Dr Holger Konrad
- Dr Rowena Poole
- Dr Nikola Retford
- Dr Rebecca Starr
- Dr Andrew Reid
- Dr Nagham Hawa

HAPPY NEW YEAR
from the team at Beachlands Medical Centre

Other services:

Psychiatrists, Counselling services



129A Beachlands Road, Beachlands
POHUTUKAWA COAST SHOPPING CENTRE
www.beachlandsmedicalcentre.co.nz

Classified Ads

PUBLIC NOTICES

Proposal to grant new community lease at 22 Kawakawa Orere Rd, Kawakawa Bay and 50 Howard Rd, Orere

Auckland Council gives notice that Franklin Local Board intends to grant a new community lease to The Kawakawa Bay-Orere Health Clinic Incorporated. Both buildings are owned by Auckland Council:

Under the Reserves Act 1977, for 18sqm (more or less) for the Kawakawa Bay Health Clinic to continue operating at 22 Kawakawa Orere Rd, Kawakawa Bay.

The land is legally described as Lot 1 Deposited Plan 47455 is contained in Record of Title NA 1812/52, held by council, in trust and subject to the Reserves Act 1977.

and

Under the Local Government Act 2002, for 19sqm (more or less) for the Orere Health Clinic to continue operating at 50 Howard Rd, Orere.

The land is legally described as Part Lot 1 Deposited Plan 60293, contained in Record of Title NA35A/1492, held by Auckland Council under the Local Government Act 2002.

The Kawakawa and Orere health clinics are rural, nurse-led clinics, staffed by local registered part-time nurses; with a first-response team based at the Kawakawa Bay clinic.

The proposed new community lease is for a term of five years with one right of renewal for a further five years, as outlined in Auckland Council's Community Occupancy Guidelines (updated July 2023).

Any person wishing to comment or make an objection or submission in respect of the above proposal is to send this in writing **by the close of business on Friday, 23 February 2024**. Please indicate if you wish to be heard in relation to your submission.

Information provided to the Council is subject to the Local Government Official Information and Meetings Act 1987 and may be released by the Council under that Act. All submitters are asked to state in their submission if the whole or any part of the submission is to be kept confidential.

To lodge a submission, or request further information please contact:

Jenny Young

Community Lease Specialist, Auckland Council

jenny.young@aucklandcouncil.govt.nz

phone 021 524 915 or 09 262 5798

Private Bag 92300, Victoria St West, Auckland 1142

Find out more: phone 09 301 0101 or visit aucklandcouncil.govt.nz



PUBLIC NOTICES

Proposal to grant community lease to Kawakawa Bay Community Assn Inc. (for community garden) and to classify land 13R Karaka Rd Kawakawa Bay

Auckland Council invites submissions or objections from persons with an interest in the above proposals.

Under the Reserves Act 1977, Franklin Local Board proposes to grant a new community licence to occupy to Kawakawa Bay Community Assn Inc. for part of the land at 13R Karaka Rd, Kawakawa Bay, legally described as Lot 18 Deposited Plan 23811 contained in RT NA14B/668 (Part-Cancelled). The land is held in fee simple by Auckland Council.

The term of the proposed community lease is an initial term of five years with a single renewal term of a further five years.

Also under the Reserves Act 1977, Auckland Council proposes to classify the land at Kawakawa Bay, legally described as Part Lot 18 DP 23811 from unclassified recreation reserve to classified local purpose (community) reserve. This classification better represents the intended use of the land. The Kawakawa Bay garden group will occupy 1,472sqm (more or less) of the land with garden and some structures. The classification of this unclassified land is required to enable a new community licence to occupy to be granted.

Any person wishing to make a submission on the above proposal is required to lodge this in writing **no later than 5pm, Friday 23 February 2024** to:

Jenny Young, Community Lease Specialist

jenny.young@aucklandcouncil.govt.nz

Private Bag 92300, Victoria St West, Auckland 1142

phone 021 524 915 or 09 262 5798

Please state in your submission if you wish to be heard in person.

Any information provided to council will become subject to the Local Government Official Information and Meetings Act 1987 and may be released by council under that act, unless a withholding ground under the act applies. Submitters details may be provided to elected members for decision making purposes and may be included in meeting agendas that will be published on the council's website. Any submitter should state in their submission if the whole or any part of the submission is to be kept confidential and must indicate the grounds for the information to be withheld.

Find out more: phone 09 301 0101 or visit aucklandcouncil.govt.nz



Proposal to grant a community lease to Beachlands Boating Club at Sunkist Bay Reserve

Auckland Council invites submissions or objections from persons with an interest in the above proposal.

Under the Local Government Act 2002, Franklin Local Board proposes to grant a new community lease to Beachlands Boating Club Inc. for part of Sunkist Bay Reserve, 62 First View Ave, Beachlands, legally described as Lots 44 and 45 Deeds Plan 619, with both comprising 1012 square metres, and contained in NA501/79 (Limited) and NA501/80 (Limited) respectively. The land is held in fee simple by Auckland Council.

The term of the proposed community lease is an initial term of 10 years with a single renewal term of a further 10-years.

Any person wishing to make a submission on the above proposal is required to lodge this in writing **no later than 5pm, Friday 23 February 2024** to:

Jenny Young, Community Lease Specialist

jenny.young@aucklandcouncil.govt.nz

Private Bag 92300, Victoria St West, Auckland 1142

phone 021 524 915 or 09 262 5798

Please state in your submission if you wish to be heard in person.

Any information provided to council will become subject to the Local Government Official Information and Meetings Act 1987 and may be released by council under that act, unless a withholding ground under the act applies. Submitters details may be provided to elected members for decision making purposes and may be included in meeting agendas that will be published on the council's website. Any submitter should state in their submission if the whole or any part of the submission is to be kept confidential and must indicate the grounds for the information to be withheld.

Find out more: phone 09 301 0101 or visit aucklandcouncil.govt.nz



Professionals & Trades

BOATING & MARINE

Ovlov Marine Pine Harbour 09 536 5249
www.ovlov.co.nz

Sales and Service of outboard motors, inboards, sterndrives and IPS.

Situated in Pine Harbour Marina and mobile we can care for your vessel be it big or small.

Contact the team on 536 5249 or email on phil@ovlov.co.nz for service enquiries and partsph@ovlov.co.nz for spare parts.

BUILDERS

INNOVATE CONSTRUCTION

- NEW BUILD
- RENOVATIONS
- DECKS
- BATHROOMS

FOR ALL YOUR BUILDING NEEDS

Call Justin on: 021 460 011
Licensed Building Practitioner

justin@innovateconstruction.co.nz
www.innovateconstruction.co.nz

DENTAL

Make the right choice about your dental care

We are dedicated to your personal well-being through dental health

- Teeth whitening
- All ceramic tooth filling materials using CerecAC omnicam, 3D technology
- Permanent tooth replacements with dental implants
- For gum health and maintenance call our hygienists Shelley & Zahraa
- All aspects of general dentistry

FREE DENTISTRY IS AVAILABLE FOR ALL YOUNG ADULTS
Eligible from Year 9 until their 18th birthday Contact us today to learn more

Evening appointments available
Call us now on 530 8461 or email: info@whitforddental.co.nz

Dentists: •Dr. Rick Parfitt B.D.S •Dr. Alex Lindsay B.D.S
•Dr. Maad Youhanna B.D.S
Hygienist: •Shelley Chadwick R.D.H •Zahraa Taliib B.O.H

Whitford Dental Group
Driving Dentistry to Excellence

Whitford Village, Whitford

smile dental
giving you one more reason to smile

QUALITY AFFORDABLE FAMILY DENTISTRY

***FREE dental examinations**
*excl. xrays

129 Beachlands Rd, Beachlands, Auckland

www.smiledental.co.nz 09 302 0808

CROSSWORD ANSWERS

Across: 2. Tragic, 8. Area, 9. Herein, 11. Adjourn, 12. Anti, 13. Overly, 14. Assume, 16. Svelte, 18. Elapse, 20. Stigma, 23. Upbeat, 26. Propel, 27. Rapier, 28. Oath, 30. Dashing, 31. Fatten, 32. Dear, 33. Titled.

Down: 1. Harass, 2. Teat, 3. Radial, 4. Grouse, 5. Chrome, 6. Tear up, 7. Enzyme, 10. Envelope, 15. Stampede, 17. Vat, 19. Sea, 20. Strife, 21. Impute, 22. Arrant, 23. Upshot, 24. Blonde, 25. T-shirt, 29. Aged.

Temporary road closure



McNicol Rd (between Clevedon-Kawakawa Rd and Tourist Rd) will be closed from 6.30am until 9am, Monument Rd (between Tourist Rd and 107 Monument Rd) will be closed from 6.30am until 12pm, McNicol Rd (between Tourist Rd and 600 McNicol Rd), and Tourist Rd (between Monument Rd and McNicol Rd) will be closed from 6.30am until 10.45am on Sunday 4 February 2024 for the Clevedon Half Marathon event. Contingency date: 10 March 2024

These closures apply to all except authorised and emergency vehicles. For further information, please contact Auckland Transport on 09 355 3553.

at.govt.nz



Read online
www.pctimes.co.nz



Professionals & Trades

DENTAL




INTEREST-FREE DENTAL PAYMENT PLANS

Book online: www.marinadentists.co.nz | 190 Jack Lachlan Drive, Beachlands
Call us: 09 535 1074

MECHANICAL REPAIRS

MARAETAI AUTOMOTIVE

All Makes & Models | All Types of Repairs
Petrol - Diesel - European Vehicles - Loan Cars
• Servicing • WOF • Brakes • Clutches • Wheel Alignments
• Tyres • Transmission Services • Batteries • Welding
• Cambelts • CV Joints • Auto Electrical Repairs

131 Maraetai Drive, Maraetai  ALL WORK GUARANTEED
Ph: 536 6542 HOURS: Mon - Fri: 8am-5pm

TREE SERVICES

CALL NATHAN 021 196 6509



CHIPPING TREE PRUNING
LAND CLEARING TREE REMOVAL
HEDGE TRIMMING STUMP GRINDING

FIND US ON FACEBOOK coastalcutters@hotmail.com

DRAINAGE & EARTHWORKS



Drainage Vision Limited
www.drainagevision.co.nz
Mike 027 593 0326

- Drain Unblocking • CCTV Inspections • Certified Drainlayer
- Vacuum Trucks • Pipe & Cable Locations



POHUTUKAWA MOTORS .co.nz

AA APPROVED REPAIRER, AA BATTERY STOCKIST, MTA ASSURED

WE ARE YOUR LOCAL, HONEST AND TRUSTED AUTOMOTIVE REPAIRER. POP DOWN AND SEE US. WE'LL LOOK AFTER YOU AND YOUR VEHICLE.

- ALL MECHANICAL REPAIRS
- WOF
- BRAKES
- TYRES
- AUTOMOTIVE AIRCON SERVICING

57 THIRD VIEW AVENUE, BEACHLANDS
09 536 6664



Land Clearing
Tree Maintenance
Tree removal
Stump Grinding
Hedge Care

Phone Doug
021537171 • 09 5378595
info@dstrees.co.nz
www.dstrees.co.nz

ELECTRICIANS

Auckland Wide Electrical
Ph 536 6800
Your Local Registered Electricians



- Heat Pump /Aircon Installations
- Switchboard Upgrades & Rewiring
- TV Cabling and Aerial Installations
- New House Wiring and Renovations
- Water pumps • Hot Water
- Oven Repairs • Lighting and Switchgear

www.awe.co.nz • help@awe.co.nz • free quotes
Providing electrical services on the Pohutukawa Coast & throughout Auckland

MORTGAGE ADVISERS

Loan Market New Zealand's widest range of lenders, in one place.

Toni Dawson, Mortgage Adviser
027 646 9269
toni.dawson@loanmarket.co.nz
NZ Financial Services Group Limited (FSP286965)

Find out more at adviser.loanmarket.co.nz/toni-dawson



Jessep Contracting Ltd
Your problem is our specialty

- Tree Work, Fine Pruning and Removals
- Shelterbelt Removals
- Stump grinding
- Palm Cleaning
- Landscaping, Truck, digger and bobcat hire
- Tree light installation

CALL PHIL FOR A FREE QUOTE
022 607 4455
CHECK OUT jessepcontracting.co.nz

TYRES



TYREGUARD
PROTECTING YOUR JOURNEY

YOUR TRUE TYRE PROFESSIONAL ON THE COAST

- Friendly Reliable Service
- Locally Owned & Operated
- Over 20 Years Experience
- For ALL Your Tyre Needs

Agricultural, Batteries, Car / Passenger, Earthmover, Mag & Tyre Packages, Puncture Repairs, Truck / Commercial, Wheel Balancing, 4WD / Off Road, 24/7 After-Hours Callout

Call Mike 021 901 034 | sales@tyreguard.co.nz | www.tyreguard.co.nz



Pohutukawa ELECTRICAL

No job too small - No job too big!
Fast, reliable service.
Qualified lighting designer

PH: 536-4076 FREE Quotes
MOB: 021 769 964 www.pohutukawaelectrical.co.nz

ROOFING



ROOFING & SPOUTING NZ LTD
Delivering Quality & Durability

RE-ROOFING | NEW ROOFS | ROOF COATINGS
CONCRETE ROOF TILE SPECIALIST | CONCRETE TILE REPAIRS
GUTTER REPLACEMENT | INTERNAL GUTTER CONVERSION

0800 766 350 | www.roofingnz.co.nz | info@roofingnz.co.nz

VETERINARY

Franklin Vets Beachlands

1/43 Kouka Road,
Pohutukawa Coast
Shopping Centre
538 0010 • beachlands@fvs.co.nz
www.franklinvets.co.nz

OPEN HOURS
Mon-Friday 8am-6pm
Saturday 9am-3pm



SCAFFOLDING

QUALITY | RELIABLE | WHITFORD BASED | LAYHER SCAFFOLD SYSTEM



DTS WRIGHT
SCAFFOLDING

Contact Dylan 021 239 4276 | dtswrightscaffolding@gmail.com

MEAT SUPPLIER



For all your homekill and hunting processing.
Vacuum packing standard & delivery available.
Qualified butchers, expert advice, friendly service.
Sausages (gluten free available), bacon, salami, biersticks, biltong, smoking and curing.

027 632 8979
admin@meatworx.co.nz
www.meatworx.co.nz

STAINLESS FABRICATIONS

DARRYL SMITH
STAINLESS FABRICATIONS LTD

- Alloy Boat Repairs
- Alterations & Custom-made Accessories a Specialty, Including Architectural Alloy, Stainless Steel & Steel Fabrications

Ph: 266 8774 or Fax: 267 1104
Email: darrylsmithstain@actrix.co.nz

POHUTUKAWA COAST VETS

LOCALLY OWNED & OPERATED IN BEACHLANDS

Book an appointment
Ph: 09 320 1472

reception@pcvets.co.nz
43 Wakelin Rd, Beachlands
www.pcvets.co.nz



Advertise here for \$30 weekly or \$35 fortnightly.

Ph: 021 026 14467 or email advertising@pctimes.co.nz

BUSINESS LISTINGS

ACCOUNTING SERVICES

Probiz Systems Ltd, Sharon Bramley	530 8036
Ian McLennan, CA www.iwm.co.nz	536 6715
Diane Myers CA, diane@myersca.co.nz	292 9470
Louw & Co, info@louwandco.co.nz	533 8420
Business Allsorts, MYOB & Xero Experts	536 5850
Peat Johnson Murray	869 2091
Giles & Liew, gilesandliew.co.nz	262 1955

AERIALS, TV & HOME THEATRE

Auckland Wide Electrical	536 6800, 021 998 665
--------------------------	-----------------------

AGGREGATES

Beachlands Mitre 10	536 6567
---------------------	----------

ALUMINUM WINDOWS

www.windowrenovations.co.nz	
Repairs and Replacements	021 297 2320

APPLIANCE SERVICING

Axial appliance servicing Service@axial.co.nz	573 0877
Appliance Wizard Ltd Ph Paul	0275 784 226

ARCHITECTS

Peter Diprose www.diprose.co.nz	530 9065 or 021 125 1498
---------------------------------	--------------------------

ARCHITECTURAL PLAN & DESIGN

Ross J Willoughby	530 9358
RBG Ltd	027 260 8005

AUTO ELECTRICIAN

Mobile Auto & Marine	0800 662 352
----------------------	--------------

BARBERS

Joe's Barbershop	536 7265
------------------	----------

BEAUTY

Xtreme Beauty & Barbers	600 2325 or 021 992 686
www.xtremebeauty.co.nz	
Serenity Day Spa, serenitydayspald@yahoo.com	02102216026

BED & BREAKFAST

Brookwood Lodge, Beachlands.	536 6975 or 0274 796 453
------------------------------	--------------------------

BLIND SERVICES

Blindworks - For all New Blinds - Plus Blind Cleaning and Repairs	
www.blindworks.co.nz	0800 999 229

Onsite blind cleaning & repairs - plus new blinds	
info@onsiteblinds.co.nz	0508 253 262

BOOKKEEPERS

Business Allsorts, MYOB & Xero Experts	536 5850
--	----------

BUILDERS

Bryant Builders Ltd	027 493 5507 or 027 692 8777
Horning Instincts Ltd, ph Gareth Price	021 618 181 or 536 6422
Michael Nootobos	536 6628 or 0274 799 776
Stehr Brothers Construction	021 939 008

BUILDERS' SUPPLIES

Morton Timber Co. Clevedon	292 8656
Beachlands Mitre 10	536 6567

CARPET CLEANING

Aladdin Carpets, Phone Michelle	09 537 4320
---------------------------------	-------------

CELEBRANT

Ceremonies by Diana, www.celebrantdiana.co.nz	021 152 9925
---	--------------

COMPUTER REPAIR

Wi-Fi & Internet, Home and Office IT Support	
Call Graeme Thomas	027 429 0677

CONCRETE SERVICES

Aaron Ross Concreting	0210 233 2673
We Lay Concrete Ltd.	021 038 1086
Murray Douglas Limited	027 498 5267

COSTUME HIRE

Clevedon Costumes and Vintage Apparel	022 018 2711
---------------------------------------	--------------

DENTISTS

Whitford Dental Group	530 8461
- Dr Rick Parfitt, Dr Alex Lindsay & Dr Susan Clow	
- Hygienist - Shelley Chadwick & Zahraa Talib	530 8461
Anthony Hunt Dental Ltd, Dr Anthony Hunt, Clevedon	292 9071
Marina Dentists Pine Harbour	536 4361
Smile Dental Beachlands	
- Your local dentist. New patients welcome.	022 8888 171
- Free examination since 1996	09 302 0808
www.smiledental.co.nz	0800 4 smile

DIGGER & TRUCK HIRE

The Little Digger	027 278 0335 or 536 4424
Digger Landscapes www.diggerlandscapes.nz	021 415 832

DOCTORS

Beachlands Medical Centre	536 6006
---------------------------	----------

DRAINLAYERS

Vibe Earthmovers and Drainage	call Vincent 0272 225 377
Probuilt Earthworks Drainage	call Gary 021 617 611
Drainage Vision Ltd	call Mike Adams 027 593 0326
Certified drainlayer, CCTV inspections, drain unblocking	

EARLY CHILDHOOD EDUCATION

Whitford Early Learning Centre	530 8726
Clevedon Kidz Early Childhood Centre	292 8358

EARTH MOVING CONTRACTORS

Henri & Lynda Habraken	0274 961 472, 536 6806
www.brookbycontracting.co.nz	Earthworks/Cartage/Drilling
	027 530 9290

Riordan Contracting	09 530 9429 OR 027 430 9429
Stehr Brothers Civil Construction	021 939 008

ELECTRICIANS

Auckland Electrical & Pump Services	536 4074, 027 4741 579
Auckland Wide Electrical	536 6800, 021 998 665
Pohutukawa Electrical	536 4076, mob 021 769 964
Positive Electrical Services	021 801 606

ENGINEERS - CIVIL/ENVIRONMENTAL/STRUCTURAL

Fraser Thomas Ltd	278 7078
-------------------	----------

FENCING CONTRACTORS

Craig McLeod	027 292 5844
White Fencing:	292 8064, 0274 957 868
- rural fencing, retaining walls	www.whitefencing.co.nz

FLOORING

Nicks Floor Sanding	536 6916, Mobile 021 875 456
---------------------	------------------------------

FLORISTS

Clevedon Flowers, www.clevedonflowers.co.nz	292 9540
Harbour Rose Florist - Wedding and Events	021 0243 5299

FUNERAL DIRECTORS

Resthaven Funeral Services	
Rachel Benns & Raewyn Proctor	533 7493, 267 2530
Ensom Funeral Services	
John Ensom & Jo Nevin	299 6646 or 524 6765
Fountains Funeral Directors & Monumentalists -	
Papakura, Franklin and Manurewa	298 2957
Howick Funeral Home Robert Johnstone - Mark Rowley	534 7300
Souly Funerals Beachlands	0800 47 68 59

GARAGE DOORS

Repairs & Service, Metro Garage Doors	263 6608
---------------------------------------	----------

GARDEN CENTRE

Beachlands Mitre 10	536 6567
---------------------	----------

GARDENING

Rosie's Gardening Service	021 0233 5998
---------------------------	---------------

GEOTECHNICAL SERVICES

Fraser Thomas Ltd	278 7078
-------------------	----------

GIBSTOPPING

Gib stopping & painting - Tony	0274 966 394 or 536 6477
--------------------------------	--------------------------

GLASS AND GLAZING

Manurewa Glass	266 7794
Howick Glass	535 4180

GUTTER CLEANING

Skyhigh Roof and Gutter Cleaning Ltd	
Website: www.skyhigh.nz	021 951 719

HAIRDRESSING

Hair Do's @ Maraetai, ph Denise	0274 599 901
Cooper Hairdressing, 16 Te Pene Rd, Maraetai	027 329 1781

HANDYMAN SERVICES

Local Handyman:	536 5050 or 021 156 7370
Oakes Build Landscape Maintenance, www.oakes.nz	021 903 020

HEAT PUMPS

Positive Electrical Services	021 801 606
Auckland Wide Electrical	536 6800
AES - Auckland Energy Solutions	
Website: www.aes.nz Phone: 09 575 1191	

HOUSE WASHING

Panoramics	530 8136 or 027 245 3444
BEST Property Services	021 366 615
Just Clean Me, Exterior Cleaning Services	022 089 2383
House washing, gutter cleaning, roof treatments, water blasting.	

JEWELLER

Paul Taylor Manufacturing Jewellers	536 4200
Repairs/Remodelling/Valuations/Insurance Replacements	
Shop C/7, 129 Beachlands Rd, Pohutukawa Coast Shopping Centre	

KITCHENS

Kitchen Craft Ltd, Ph Warren	09 274 4221
for Sizzling Kitchen Design & Cabinetry	www.kitchencraft.co.nz

LANDSCAPING

Eastside Landscapes	021 484 158
Nicky Auld - landscape design, consultations	021 972 534

LAUNDROMAT

Kiwi Laundry Co, www.kiwilaundry.co.nz	022 463 8416
7 DAYS at GAS Maraetai, 131 Maraetai Drive, Maraetai	536 4218

LAWNMOWING & GARDENING SERVICES

JIMS MOWING Beachlands - Frank	027 415 3657
Greenacres - Stephen Howe	292 4165 or 021 2266 753
Prolawns (Beachlands based) Shane	021 746 887
R&R Garden ServicesRichie: 021 917 332, Roanne: 027 252 8183	
Coastal Gardener (Beachlands based) Darryl	022 360 3065

LAWNMOWER SALES/SERVICE/REPAIRS

B'Inds/M'tai mower/chainsaw repairs	536 5621 or 027 308 7777
-------------------------------------	--------------------------

LEGAL SERVICES

Sutcliffe Matson Law	09 279 8351 or 021 327 030
----------------------	----------------------------

LOCKSMITHS

Local Locksmith - Tony	536 5050 or 021 156 7370
Armstrong Smarter Security	0800 506 111

LPG SUPPLIERS

Matagas	0800 954 427
---------	--------------

MARINE AND BOATING

Ovlov Marine Pine Harbour LTD	536 5249
-------------------------------	----------

MECHANICAL REPAIRS

Maraetai Automotive	536 6542
Pohutukawa Motors, 57 Third View Ave, Beachlands	536 6664
Garaway Autos	022 395 6185
Luke's Garage Ltd	09 218 6442 / 022 301 0412

MIRRORS

Howick Glass	535 4180
--------------	----------

OUTBOARD REPAIRS/MARINE ENGINEERING

Eastern Marine - Mercury Certified Service Centre - Outboards, stemdrive, petrol & diesel.	536 6252
--	----------

PAINTERS & DECORATORS

East Auckland Painting Ltd	027 619 2619
specialistlinings.co.nz We fix, stop, and paint	0800 54 64 64
Painta Property Services-Beachlands+Sth East Akl	021 101 6937
Interior / Exterior / Roof / Fences - mikegrubb@painta.co.nz	

PEST CONTROL

Coastal Pest Solutions (including rats, rabbits, possums, pest birds, wasps & bees)	536 6020 or 0273 932 125
Professional Pest Control	536 6690 or 021 078 3622

PET ACCOMMODATION

Fairfield Pet Lodge, Clevedon	027 222 0307
Pets at Whitford Spa and Stay (PAWSS)	530 8860

PHARMACIES

Unichem Beachlands Pharmacy	536 6500, fx 536 6590
Pohutukawa Coast Pharmacy	536 6747, fax 536 6742

PHYSIOTHERAPIST

Beachlands Physio beachlandsphysio.co.nz	09 222 4120
--	-------------

PLASTERING SERVICES

Solid Plastering, Bruce Parsons	021 981 812
---------------------------------	-------------

PLUMBERS

Dynamo Plumbing	0800 175 988
BF Brown Plumbing & Drainlaying	0800 477 455

PLUMBERS & GASFITTERS

Ashby Plumbing & Gas	292 2445 or 0272 553 499
----------------------	--------------------------

PROPERTY MANAGEMENT

Rent People Ltd	0800 426 580
Ray White Lighthouse Licensed Real Estate	536 7011
Barfoot & Thompson Beachlands	536 4990

PUMP SALES & REPAIRS

Auckland Electrical & Pump Services	536 4074, 0274 741 579
Malmaks Water Shop	530 8872, 021 353 158
Allwater Pumps and Supplies Ltd	09 536 5444, 027 536 5444
Clevedon Pumps & Filtration	027 479 7741

QUARRY

Manukau Quarries	263 0220
------------------	----------

QUANTITY SURVEYORS

Hope & Associates - Residential estimating specialist	021 882 312
---	-------------

REAL ESTATE AGENTS

Barfoot & Thompson Beachlands	536 4990
Barfoot & Thompson Whitford	530 8292
RE/MAX Clevedon	292 8388
Ray White Lighthouse Licensed Real Estate	536 7011

ROOF PAINTING SERVICES

Master Tradesman. Text details for fast service:	027 517 8494
Visit our website: www.5starroofpainting.co.nz	

ROOF SOFTWASHING

Skyhigh Roof and Gutter Cleaning Ltd	
Website: www.skyhigh.nz	021 951 719

ROOFING SERVICES

Eastern Roofing Services, ph Steve	536 5875 or 021 865 6
------------------------------------	-----------------------

THINKING OF SELLING THIS SUMMER?

Sat & Sun 2:00 - 2:30



Whether it's a big move you're dreaming of, or an upgraded for a growing family, our Barfoot & Thompson Beachlands team have a wealth of knowledge and experience that can help you every step of the way. Check out our handy guide below if you're thinking of selling your home this summer.

1. Get an Appraisal

The first step you need to take is to decide when or if you want to sell. A quick way to find out what your house might go for is to check its CV, but it's important to note that this is merely an estimated "most likely selling price" and can quickly become out of date. Our salespeople are experts in assessing value, utilising their experience and in-depth knowing of the area and current market. Appraisals are free and zero-obligation, and the salesperson will be able to give you insight into the selling process that may be missed in independent research.

Did you know our property management team also offer appraisals? If you're on the fence about whether you'd like to sell or rent your property, we can help you explore both options.

2. Prioritise First Impressions

Potential home buyers often form opinions well before stepping foot inside your home. Freshly cut lawns, well cared for gardens and hedges, water-blasted concrete or fences, and even fresh paintwork on the house exterior can make a huge difference on first impressions. Summer is often the time we get outdoors and tackle those overgrown shrubs and flowerbeds, so why not the extra time to really make the outside of your home as inviting as the inside.

3. Clean and Declutter

To allow potential buyer to envision themselves in the house, decluttering is essential. Clear spaces of family photos and very personalised decor. This will help to create a neutral canvas for buyers to imagine their own lives within the space.

4. Tackle Repairs and Renovations

Address time lingering repairs at the bottom of your to-do list. Embrace the classic Kiwi DIY attitude and look at issues like leaks, squeaky hinges, cracked glass, or rips in the wallpaper. These seemingly minor repairs will be notices, and can impact the overall impression of your home.

5. Consider Professional Home Staging

While not a mandatory step, home staging can elevate your property's appeal. Do some research and speak to your chosen salesperson to see whether professional staging is the right choice in selling your home.

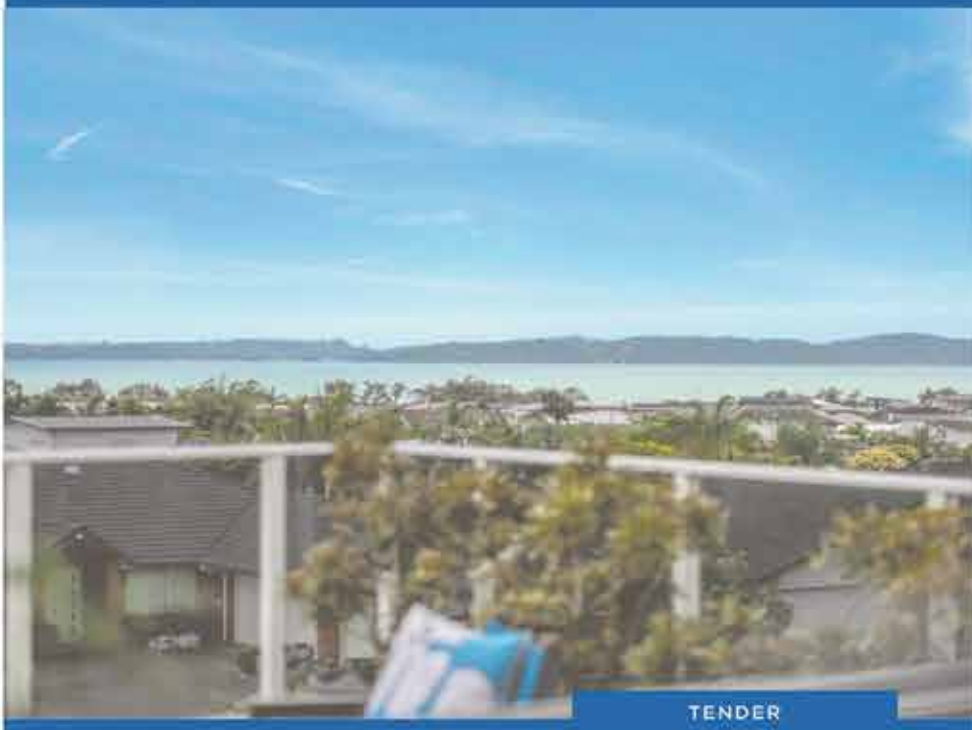


Sales Team



Property Management Team

BARFOOT & THOMPSON



TENDER



FOR SALE

BEACHLANDS

12 COLUMBIA CRESCENT



TENDER

4:00pm Thursday 8 February 2024 (unless sold prior)

VIEWING

SAT & SUN 3:00pm-3:30pm

barfoot.co.nz/859749

ON ANOTHER LEVEL

- Captivating sea views with North Facing decks
- Multi-Level open plan layout that backs onto Spinnaker Bay reserve
- Double garage with 2 workshop areas and off-street parking for the boat

Call 003 for more info

Ian Boswell
027 285 9314

i.boswell@barfoot.co.nz

Nicolette Hale
027 702 9157

n.hale@barfoot.co.nz

BEACHLANDS

44 EIGHTH VIEW AVENUE

FOR SALE

\$650,000 plus GST

VIEWING

Contact Special Agents 003 for details.

barfoot.co.nz/859225

YOUR BOARDING CALL

We have an offer three freehold sections that are super close to Pine Harbour Marina so you can simply walk to board the 35 minute ferry service to Auckland CBD or stroll down to enjoy one of the many marina-side restaurants.

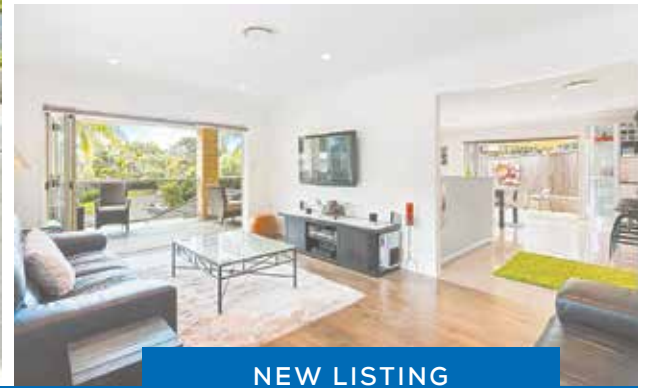
Lot 51, Lot 25, Lot 26

Ian Boswell
027 285 9314

i.boswell@barfoot.co.nz

Nicolette Hale
027 702 9157

n.hale@barfoot.co.nz



NEW LISTING

MARAETAI

32 ALBACORE WAY



TENDER

4:00pm 8 Feb 2024 (unless sold prior)

barfoot.co.nz/859433

VIEWING

Open Home Sat 3:00 - 3:30pm
Sun 3:00 - 3:30pm



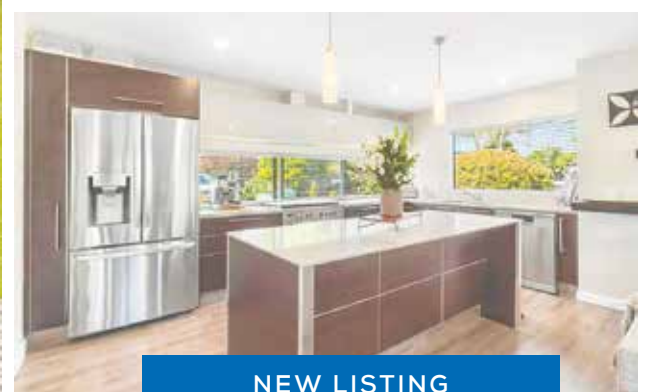
Mike Deverell
021 466 300
m.deverell@barfoot.co.nz



Kobus Steyn
022 350 2428
k.steyn@barfoot.co.nz

Reel in the Coastal Dream

This stunning 5-bedroom residence is nestled at the end of a quiet cul-de-sac in the heart of picturesque Maraetai. This meticulously crafted home with sought after block and brick construction, offers a luxurious blend of comfort, style, and functionality.



NEW LISTING

BEACHLANDS

25 CONSTELLATION AVENUE



TENDER

4:00pm 8th Feb 2024 (unless sold prior)

barfoot.co.nz/859651

VIEWING

Open Home Sat 1:00 - 1:30pm
Sun 1:00 - 1:30pm



Mike Deverell
021 466 300
m.deverell@barfoot.co.nz

RED DOOR BLUE SEA

Indulge in coastal luxury at this prestigious address in Spinnaker Bay. An executive 5-bedroom masterpiece seamlessly blending modern architecture with refined design. Step through the iconic red door into an inviting double-volume entrance.