

Pōhutukawa Coast Times

Issue
1574

30 May 2025

**#1 AGAIN.
MUST BE
SOMETHING IN
THE WATER.**

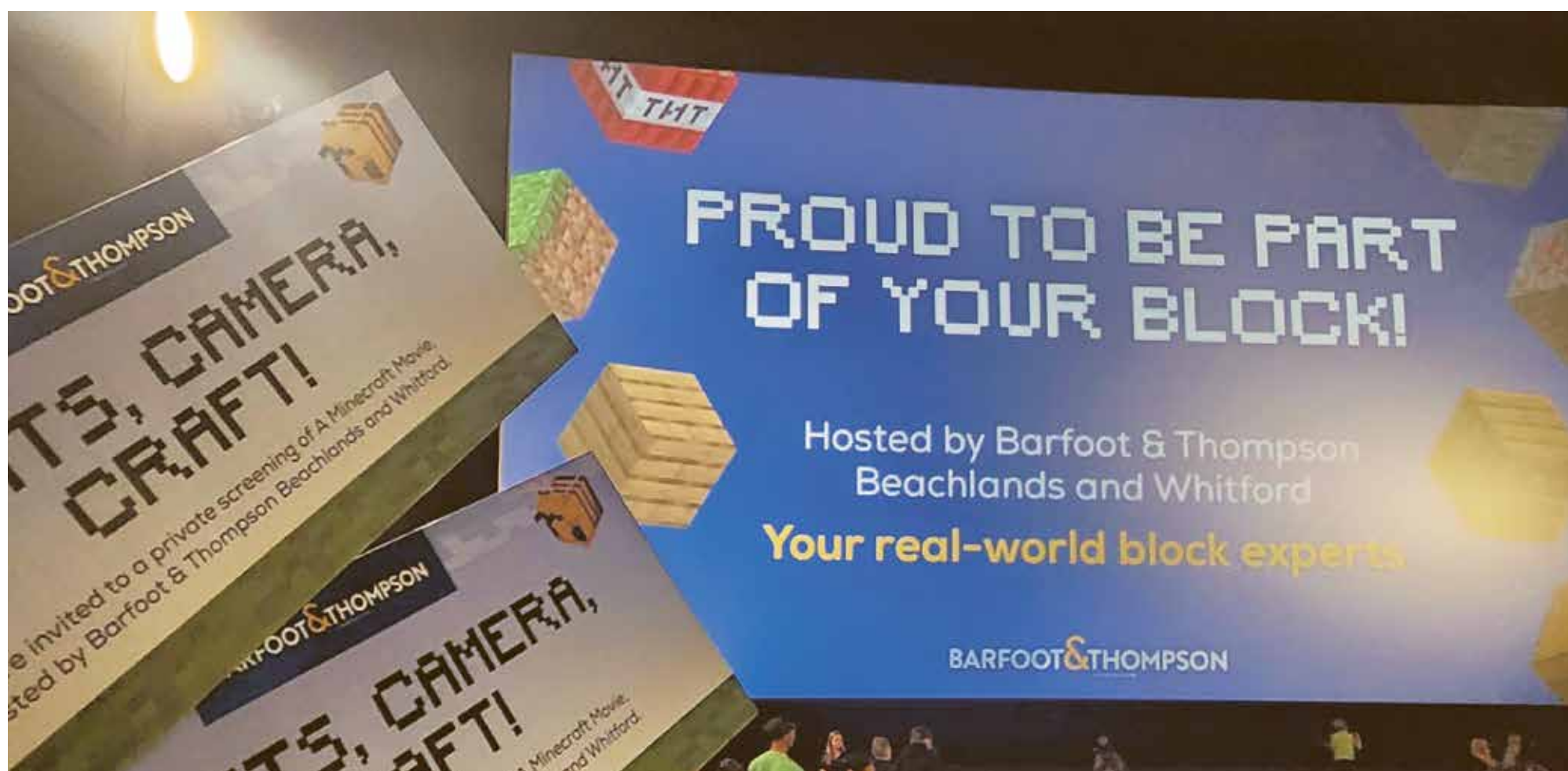
#1 Agency of the Year in Beachlands and Maraetai for
two years running – as awarded by RateMyAgent.*

Beachlands
09 536 4990

Whitford
09 530 8292

**BARFOOT
& THOMPSON**
LICENSED REAA 2008

*Based on customer satisfaction ratings and total number of reviews collected. True as of May 2025.



Making a difference on a local level



Getting tempted by the Easter Colouring prizes...



Sending Team Goodies on their way!



The excited crowd at our community movie night

Here at Barfoot & Thompson Beachlands, we understand the importance of reaching out to our community and supporting the locals around us.

We're always keen to build stronger connections with our neighbours, and find ways to contribute through meaningful projects that benefit everyone.

As well as offering ongoing sponsorship to organisations like Maraetai Beach School, and Beachlands Maraetai Rugby Club, our team also enjoys getting involved in local events and initiatives that help make a difference.

EASTER COLOURING COMPETITION

It's practically tradition now, running our community Easter colouring competition. This year saw over 50 entries across both age categories, and choosing the winners was hard work!

The excitement of the kids dropping in their entries makes it all worth it, along with the words of support from their parents and caregivers.

PORK PIE CHARITY RUN

The Barfoot & Thompson team was proud to sponsor Team Goodies as they took on the Pork Pie Charity Run - a six day journey across the country, all in support of KidsCan!

Kelly & James raised over \$16,000 in this year's charity run, backed by our team all the way.

MINECRAFT MOVIE NIGHT

To say our first Community Movie Night was a hit would probably be an understatement. The Xtreme screen cinema was packed with excited families, eager kids, and plenty of popcorn.

This night was all about *fun*, and we think we nailed it.

**BARFOOT
THOMPSON &** | **Beachlands**

42 Wakelin Road • 09 536 4990 • beachlands@barfoot.co.nz

30 May 2025

Fifty Shades of Purr: Mr Grey wins hearts of Woolworths shoppers



Mr Grey is now a fur-miliar face at Woolies.

Wakelin Road has feisty Fairlane and Spinnaker Bay has cat-burglar Vesting - does Beachlands have room for one more fluffy superstar?

Mr Grey would like to think so.

The three-year-old moggie, who belongs to the Botha family who live on Seventh View Ave, has recently been snapped by the paw-parazzi frequenting Woolworths in the Pōhutukawa Coast Shopping Centre.

Owner Catherine Botha says Mr Grey (named after the

Fifty Shades of Grey's main character) loves everybody, and is not remotely intimidated by anything that goes on around him.

At one of the family's previous homes, in Toomer Place, Mr Grey would lie sprawled out in the middle of the cul-de-sac and the cars had to drive around him.

CONTINUED ON PAGE 10

LICENSED TO SELL

Ian 027 285 9314

Jenny 0204 000 2564

Nicolette 027 702 9157

Clare 021 206 6822

#1 Top Salesperson
Beachlands Branch 2024

BARFOOT & THOMPSON

SPECIAL
AGENTS
003

We're here for **you**
and all your property
management needs!

BARFOOT
& THOMPSON
PROPERTY MANAGEMENT

Beachlands
09 536 4990

RayWhite.
BEACHLANDS

Your Premium **Choice**
in Property Management

Ray White Beachlands

Lighthouse Real Estate Limited
Licensed (REAA 2008)

P : (09) 536 7011
E : beachlands.nz@raywhite.com
W : rwbeachlands.co.nz
A : 81 Second View Avenue, Beachlands



Visit us
226 North Road,
Clevedon 2248
Ph: 09 292 8656

Email: office@mortontimber.co.nz
Web: www.mortontimber.co.nz
Facebook: mortontimber.clevedon

AUTUMN SPECIALS

TUI COMPOST 40L BAG - \$9.00 per bag +gst

TUI POTTING MIX 40L BAG - \$13.00 per bag +gst

SECOND HAND WOODEN GATES

Sold by pallet lots only of four & five - \$450.00 per pallet +gst

MACROCARPER SLEEPERS

200 x 50 2.4m long \$28.00 each +gst.

CONTRAC RAT BAIT 1.8KG - \$63.00 per bucket +gst

PLY

2400 x 1200 12mm untreated non structural clean face ply
\$49.50 per sheet +gst

2400 x 1200 19mm H3 carpet grade flooring
\$105.00 per sheet +gst

2400 x 1200 18mm untreated non structural clean face ply
\$72.00 per sheet +gst

OPENING HOURS

MONDAY - THURSDAY 7:30AM TO 5:00PM
FRIDAY 7:30AM TO 4:30PM & SATURDAY 7:30AM TO NOON

INSIDE: Clevedon School braces for growing pains p3

Hunua students take the lead for Gala Day fun p6

RayWhite.

Second Generation Real Estate
EXPERIENCE the difference...

Ray White Beachlands
Lighthouse Real Estate Limited
Licensed (REAA 2008)

P : (09) 536 7011 or (021) 400 979
E : beachlands.nz@raywhite.com
W : rwbeachlands.co.nz
A : 81 Second View Avenue, Beachlands

EmbroidMe.

East Tamaki
We Supply & Brand
Uniforms & Promotional Products

Embroidery, Printing, Lettering, Dye Sublimation and more...
Cnr Smales and Springs Rds, East Tamaki - 09 265 0300

Transform your outdoor space

Building Supplies, Timber, Bulk Landscaping
available at 42 Bell Road, Beachlands.

Open 7 days, all welcome.

MITRE 10
BEACHLANDS
WITH YOU ALL THE WAY

Deadlines: Display advertising - 5pm Thursday. Classified and News - midday Friday

advertising@pctimes.co.nz | www.pctimes.co.nz

Pohutukawa Coast Times

GET IN TOUCH
E: info@pctimes.co.nz
W: www.pctimes.co.nz
F: facebook.com/pctimes
A: PO Box 5, Beachlands 2147

EDITOR
Leanne Chamberlin
021 426 207
leanne@pctimes.co.nz

ADVERTISING
Melody Cutfield
021 0261 4467
advertising@pctimes.co.nz

CLASSIFIEDS
advertising@pctimes.co.nz

DELIVERY/DISTRIBUTION
distribution@pctimes.co.nz

ACCOUNTS
Pam Rutherford
accounts@pctimes.co.nz

The Pohutukawa Coast Times is distributed weekly to 6500 homes and businesses in: Whitford, Brookby, Beachlands, Maraetai, Clevedon, Ardmore, Alfriston, Kawakawa Bay, Orere Pt, Hunua, Paparimu



The PC Times 20 years ago:
27 May 2005: Council considers options for Whitford Village growth.

PHE
PINE HARBOUR ELECTRICAL

Weekly Tide Chart

30 Fri	3:19am ▼ 0.6m	9:43am ▲ 3.3m	🐟
31 Sat	4:14am ▼ 0.7m	10:36am ▲ 3.3m	🐟
1 Sun	5:09am ▼ 0.8m	11:28am ▲ 3.2m	🐟
2 Mon	6:04am ▼ 0.9m	12:20pm ▲ 3.0m	🐟
3 Tue	12:46am ▲ 3.1m	6:59am ▼ 0.9m	🐟
4 Wed	1:39am ▲ 3.0m	7:52am ▼ 1.0m	🐟
5 Thu	2:31am ▲ 3.0m	8:44am ▼ 1.0m	🐟

MARINE FORECAST – VHF CHANNEL 19
AUCKLAND FORECAST – 0900 999+ YOUR STD

Pine Harbour Electrical
Unit 1A Pine Harbour Marina
P: 536-6177
W: www.phe.co.nz

Guest editorial by Rotary Club of Pohutukawa Coast

Like all service clubs, Rotary struggles to maintain membership. This is not unique to our club. Clubs around our district have the same challenges, some have amalgamated with other clubs or disbanded. An area where clubs are expanding is the Pacific Islands. The Islands make up a part of the Auckland District.

People are not joining Rotary for a variety of reasons. People are busy with their lives, working, coaching or driving youngsters to after school activities, etc. But also because the perception of Rotary is that we are a load of old codgers sitting around complaining about the state of the world.

Alex Garden, previously President, has just completed the Boston Marathon in 3 hours and 35 minutes. Members of the club include Pete and Sharon Crean who are based in Kenya, and are founders of the charity Beyond Water. They have built 19 toilets for schools, 24 new water tanks and other sanitation blocks. Their Girl project has just reached its 10th anniversary, promoting girls’ education and involvement in the workforce. Two years ago, they rode the North Island with some of our members, raising \$25,000. Mostly, the money raised was from Rotary Clubs across the country. Pete is organising another charity ride in January, this time in the South Island.

Rotary is not good at promoting itself. The question I ask myself is if Rotary were to disappear, would it matter? The club has a long history in the community. It runs the Fun Run and the Trolley Derby. All the money raised goes back into the community in an open grant round. This year, \$20,000 was raised. Separate from the grant round, we have funded three young people to undertake Rotary leadership courses. Community grants have been made to:

- The Community Response Team, the purchase of emergency equipment
- Bellyful East Auckland: maternity food support
- ANZAC committee, for the establishment of a permanent war memorial
- Menz Shed for the purchase of a container
- Equine Therapy
- Beachlands School for special needs sensory support, special education and reading support

- Maraetai School for purchase of special education equipment, Positive Mindset and Resilience programme

Our next open talk, all welcome, will take place on 26 June at the Rowan Muir Centre, 141 Maraetai Drive, starting at 7 pm featuring special guest Jim Hainey. raconteur and professional motivational speaker. In a former life, Jim was CEO of Drake Personnel. As a professional speaker, he has worked with the New Zealand Warriors, New Zealand Basketball, and New Zealand Swimming. Jim will talk on the perils and his experience of public speaking, good and bad, and also how to judge your audience. This is a must for anyone involved in public speaking.

Youth photo competition

We recently received a grant to engage youth in community projects. In June, Rotary is running a photographic competition for young people living in the area.

Details are outlined in the poster below, and are also published on the Pōhutukawa Coast Rotary Facebook page. The competition will run from 1-15 June, and a selection of photographs will be displayed at Te Puru.

If you want to hear more about Rotary and attend one of our monthly meetings or open meetings, email John Stacey at pohutukawacoastrotary@gmail.com.

- by Rotary Club of Pohutukawa Coast president John Stacey

The views expressed in the Pohutukawa Coast Times Guest Editorial column are not necessarily the views of the editor or publisher.

Pohutukawa Coast PRESBYTERIAN CHURCH
“A Voice of Positive Christianity”

Every Sunday 9am
Plus Kids’ Programme
Minister: Mark Chapman

Playgroup Mon, Tues & Wed 9am-12pm

For more information contact Lyn:
lyn.41buchanan@gmail.com

Real people, real life, real God... really!

Food bank 027 304 4998 Phone or text 5 Jacobs Way, Maraetai

OUR LADY STAR OF THE SEA CATHOLIC PARISH

We celebrate Mass at 4.30pm on the first Saturday of the month. On other Saturdays there will be Celebration of the Word with Holy Communion.

St Hilda’s Church, 3 Wakelin Road, Beachlands

Visit our website for details
www.beachlandsccl.com

SUTCLIFFE MATSON LAW

LAWYERS SERVING THE POHUTUKAWA COAST

38A Wakelin Road, Beachlands
Available Monday - Friday, by appointment

Conveyancing, Refinancing, Wills, Powers of Attorney, Business Transactions Family & Commercial Law and other general legal needs.

We are happy to meet after hours at your home for your convenience.

Ph: 09 279 8351 or Braden: 021 327 030
braden@smllaw.net.nz | breanna@smllaw.net.nz
www.sutcliffematsonlaw.net.nz

BREANNA FULLER AND **BRADEN MATSON**
BCL/LLB (HONS) | ASSOCIATE MA/LLB | DIRECTOR

PHOTO COMPETITION 1-15 JUNE

EYE ON NATURE

PHOTO COMPETITION
CALL FOR ENTRIES AGES 12-24 YEARS

PRIZE POOL \$800

PHOTO EXHIBITION 12th & 13th JULY
Te Puru Community Centre

To enter scan the QR code

PRIMA COLLISION REPAIRS

Complete panelbeating and car painting

East Tamaki: Unit B 154 Harris Rd, East Tamaki, Auckland 09 274 4778
Manukau: 2/117 Kerrs Rd, Manukau, Auckland 09 268 9340

Clevedon School braces for growing pains as population boom looms

Clevedon School is preparing for an influx of students, as Clevedon Meadows and Conmara developments inch closer to welcoming new residents to the area.

Ministry of Education hautū/leader for Te Tai Raro/North, Isabel Evans, says the ministry is monitoring the school roll growth and network changes for the area to determine the need and timing for additional classroom space.

The ministry says all schools with enrolment schemes need to manage their in-zone and out-of-zone student enrolments, as the Ministry’s policy is to only fund new teaching spaces for schools that are at capacity with in-zone students. “We do not fund new property for out of zone students,” says Evans.

Clevedon School principal Edeh Sullivan says the school has already limited out-of-zone enrolments in order to manage roll numbers.

“Over the past few years, we have been proactively planning for this significant change and have consistently drawn the Ministry’s attention to our ongoing growth.

“We know that space will be tight. The Ministry’s policy is to wait for confirmed roll growth (i.e. all the spaces in the school have to be full, including possibly the hall) before committing to new buildings, which may mean we’ll face a temporary space crunch once the growth arrives. In preparation, we’ve already made some changes, such as relocating our library to the hall to free up a classroom, and we have plans to refurbish the old dental clinic to create an additional learning space.”

Edeh says that while the school knows there will be challenges ahead, they remain committed to forward planning and will continue to advocate strongly for the school with the Ministry.

“Our school has always been the heart of the community, and we are excited to welcome new members into it.”

Further along the coast, a new 200-home development at Kawakawa Bay has raised questions about the impact on the capacity of Ōrere School. The development has been deemed “relatively small” by the Ministry of Education, which says they do not expect it to have a significant impact on the Ōrere School roll.

Ōrere School principal Kim Anketell says the school welcomes the new developments in Kawakawa Bay and the potential for new families to join their school community.

“We currently have enough space and teaching capacity to accommodate new students moving into the area and we welcome it!,” says Kim.

“We invite prospective parents to visit our school and discover the opportunities we provide. Our localised, conceptual



Over the coming decade, Clevedon School will welcome many new students as families move into the village’s new subdivisions.

curriculum has a strong focus on natural science, and offers relevant and authentic learning experiences. Importantly, our structured teaching approach supports strong academic outcomes for our students, alongside the many benefits of a well-rounded, holistic education. We believe Ōrere School offers a unique and supportive environment for children to flourish. We look forward to meeting the new people moving to Kawakawa Bay. Please pop in to visit our school and see for yourself how amazing it is.

EASTERN MARINE
ENGINEERING SERVICES

- ▶ ENGINES
- ▶ PARTS & ACCESSORIES
- ▶ PROPELLERS
- ▶ SERVICE & REPAIR

Unit 4/A, 190 Jack Lachlan Drive, Beachlands, Pine Harbour Marina
09 536 6252 | info@easternmarine.co.nz | easternmarine.co.nz

Howick
FUNERAL HOME

New Zealand owned & operated since 1993

Robert Johnstone & Kevin Kelleher

A privilege to care for your family

Every life is special, we understand that. Let us pay tribute to the life of your loved one and celebrate the unique way they have touched you, your family and those around you.

For a personal, professional service contact us today to discuss your options:
35 Wellington St, Howick | Phone 534 7300 | www.howickfuneralhome.nz

Public Notice:

Whitford Landfill Air Discharge Consent Renewal

Waste Disposal Services is renewing our air discharge consent for Whitford Landfill (expiring April 2026) to align with other consents running until 2041.

What you need to know

- No changes to the current level of landfill operations is proposed
- The landfill remains essential infrastructure for Auckland’s regional waste management needs
- To improve our rainwater management on site, we have added a leachate evaporator into the application

Join our drop-in session to learn more and have your say:

Dates: Thursday, 5 June 2025
Time: 5:30pm to 7:30pm
Location: Whitford Community Hall, 1 Whitford-Maraetai Road, Whitford

We welcome your questions and feedback.

Contact us

Email: consultation@wm.nz
Web: www.wastedisposalservices.co.nz

Waste Disposal Services is a joint venture between WM New Zealand and Auckland Council

Who will be in to win Auckland’s Elections 2025?

Team Franklin has announced its line-up of candidates who will contest for positions on the Franklin Local Board and as Franklin Ward Councillor.

Those hoping to represent the Wairoa area (which covers Clevedon, Beachlands, Maraetai and surrounding areas) are the current term’s candidates Amanda Hopkins and Malcolm Bell, joined by newcomer Alix Bonnington from Beachlands.

Board chair Angela Fulljames will step down this year.

In the hope of a bigger and more diverse contest, Auckland Council is calling out for prospective candidates ahead of elections nominations opening in July 2025.

If you think you could make a difference in the Franklin area or fancy throwing your hat in the mayoral ring, now is the time for action.

Auckland Council General Manager of Governance and Engagement Lou-Ann Ballantyne says representing Aucklanders is a hugely rewarding opportunity.

“It’s also a big responsibility to take on, and we want candidates to have the best possible chance, so this webinar is a great place to start for anyone who is thinking of standing,” Ms Ballantyne says.

“It’s so important that a good range of Auckland’s voter demographics are



Team Franklin members hoping to be elected onto the Franklin Local Board at the next Auckland Council elections include (L-R):Amanda Hopkins (Wairoa), Malcolm Bell (Wairoa), Alix Bonnington (Wairoa), Phil Donovan (Waiuku), Andy Baker (Ward Councillor), Lesieli Oliver (Pukekohe), Merritt Watson (Pukekohe), Alan Cole (Pukekohe) and Andrew Kay (Pukekohe). Source / Facebook.

represented to achieve a strong voter turnout,” she says.

“Aucklanders have told us there’s no use in voting if they don’t know who the candidates are or can’t see how they’re represented through relatable or like-minded people, so we’re doing our best

to attract new candidates from diverse backgrounds to address this.”

Running the city may not currently be at the forefront of everyone’s minds, but if it’s on your mind, now is the time to start finding out more.

Further information about elected

members’ positions can be found online at aucklandcouncil.govt.nz, or pop into the next Franklin Local Board meeting on 24 June, 9.30am at The Centre, 12 Massey Avenue, Pukekohe to see what it’s all about.

Election nominations open 4 July 2025.

The Tooth Truth: insights and benefits from your dental expert

How to choose the perfect veneer shade and shape - without looking fake

- by Marina Dentists

Your smile is one of the first things people notice — and it says a lot about your confidence and care. That’s why choosing the right shade and shape of veneers is more than just a cosmetic decision. It’s a chance to create a confident, natural-looking smile that truly reflects who you are.

We’ve all seen it: those blindingly white, perfectly square teeth that look more like a Photoshop filter than

a real smile. While a bright smile is undoubtedly appealing, going too white can have the opposite effect — it may come across as artificial, and even insincere.

The key is balance.

The best veneers enhance your smile without stealing the show. Dentists recommend choosing shades that mimic natural enamel — not too white, not too dull — for a look that feels fresh, healthy, and real.

But colour isn’t the only piece of the

puzzle. Great dentists also take into account:

- Skin tone
- Eye and hair colour
- Facial structure
- The natural tone of your other teeth

These details help ensure your veneers blend in seamlessly — enhancing your smile instead of drawing attention to the dental work.

And let’s not forget shape.

Veneers can transform not only the colour but also the shape of your

teeth. Whether it’s fixing small gaps, lengthening short teeth, or softening a harsh smile line — veneers can do wonders. In some cases, they may even serve as a fast, effective alternative to braces or aligners.

The perfect veneers don’t scream “cosmetic work”. They whisper confidence. With the help of a skilled dentist and a thoughtful approach to colour and design, you can achieve a smile that’s not just beautiful — it’s beautifully you.



The right shade is not the brightest — it’s the most natural.

☎ 09 535 1074

📍 Pine Harbour Marina

marina
ENTISTS

www.marinadentists.co.nz

Retire your way

Life live to the full in East Auckland

metlifecare

ŌTAU RIDGE



Ōtau Ridge proudly presents The Royal NZ Artillery Band

Saturday 7 June, 11am–2pm
2 Kumekume Way, Clevedon

Join us for a special performance by the renowned Royal New Zealand Artillery Band, and while you're here explore our newly opened River Lodge facilities.

Performances at 12pm and 1pm

Light refreshments provided

Village tours also available

RSVP required
Call Siobhan on 027 220 5672
siobhan.cudby@metlifecare.co.nz
[metlifecare.co.nz](https://www.metlifecare.co.nz)



Contemporary comfort, quality living
Step into our spacious two-bedroom villas with modern kitchens, open living, fine finishes, and seamless comfort in every thoughtful detail.

From \$799,000[^]



Spacious living with elegant finishes
Experience modern two-bedroom villas with bright open spaces, outdoor patios, and the added feature of a versatile study.

From \$1,069,000[^]



The epitome of luxury
Discover the spacious comfort of our three-bedroom villas, thoughtfully designed with elegant details to create a warm, inviting home.

From \$1,430,000[^]

Ōtau Ridge 2 Kumekume Way, Clevedon | Call Siobhan on 027 220 5672

PŌHUTUKAWA LANDING



Storage, space and views
Beautiful, spacious two-bedroom apartments with ample storage and stunning views, positioned in the heart of the village.

Two-bedroom apartment \$845,000[^]



Living in the heart of the village
Experience brand-new, light-filled, spacious apartments with beautiful open-plan living and with an added versatile study.

Two-bedroom + study apartment \$935,000[^]



Be amongst the action
This last available apartment in The Anchorage building perfectly showcases just how close you'll be to all the village facilities.

Two-bedroom + study apartment \$909,000[^]

Pōhutukawa Landing 3 Seventh View Avenue, Beachlands | Call Joanne on 09 261 1059

● **Find a village that feels like home**
Contact your local village or visit [metlifecare.co.nz](https://www.metlifecare.co.nz)

metlifecare
welcome home

[^] Price is for an Occupation Right Agreement secured by a first ranking mortgage in favour of the statutory supervisor on behalf of the residents.
Price valid for 30 days from time of printing. Stock availability subject to change. Car park not included in price unless indicated. Product images are indicative only.

Bush walkers happy with improvements made to Clevedon hiking path

Walkers who frequent Clevedon’s Nikau Pa/Clevedon Scenic Reserve track are delighted with significant improvements made to the western track by Auckland Council staff earlier this month. The bush walk has grown in popularity

over recent years and the western track had become degraded in parts. New metal and drains have been installed as part of the works, much of which was done by hand.



Nikau Pa’s new track surface has benefited from an upgrade.

Hūnua School students take the lead for Gala Day fun

Hūnua School is gearing up for an afternoon of fun and games with its upcoming Gala Day, and this year it’s extra special — the entire event has been organised by the students themselves. From the initial spark of an idea, to presenting a formal proposal to principal Mr Drummond, designing posters, planning the layout, sourcing prizes, and even approaching the PTA for funding support, the students have done it all. On Friday 6 June the school community is invited to the school grounds from 12.30-2.30pm, to take part in a line-up of fun including:

- Ring toss and coin toss
- Bouncy castle fun
- Colouring competition
- Gumboot throwing
- Egg and spoon races
- Gaga ball
- A delicious bake sale
- Mrs D’s famous toffee apples!

Proceeds from the Gala will help support



Hūnua School students prepare for Gala Day. the Year 7 and 8 students as they prepare for Sports Camp at Camp Adair this September. Funds raised will go towards camp fees, team sports shirts and hoodies.



RayWhite

FOR SALE

140 Maraetai Drive, Maraetai

Enter the View - Here is an opportunity you've been waiting for. Set on a substantial 954sqm (approx.) section, this elevated north facing property commands panoramic sea views and all-day sun. Comfortable as-is, it offers immediate rental income or a foothold in a tightly held neighbourhood while you plan your next move. The location alone ensures lasting value. Just a short stroll from the beach, local primary school, shops and cafes, this is a coastal holding with serious upside and delivers a lifestyle that's hard to beat.

rwbeachlands.co.nz/BCH31217
Lighthouse Real Estate Ltd Licensed (REAA 2008)

2 1 1 1 954

For Sale
By Negotiation

View
Saturday & Sunday
3:00 - 3:30 pm


Brianne Bignell
021 400 979
brianne.bignell@raywhite.com

Conor Duffy
021 022 83366
conor.duffy@raywhite.com

ALAN WHITE
ELITE
PERFORMER 24-25

SPORTS

Beachlands Maraetai Football Club



RESULTS FROM 24-25 MAY

U13 Blue v NRF Mixed 13 Grading Orakei - 5-2, POD: Dan Hooper-Spyve

Coasters v NRF Veterans Div 5 - 0-4, POD: Carlos Ramsey


15th Girls White v NRF Girls 15 Grading Kowhai - 1-1, POD: Scarlett Crossford

Atletico Beach v NRF Men Div. 7 Central/East - 3-7, POD: Lennox Dilworth

U14 Blue v NRF U14 Grading Pukekawa - 11-0, POD: Nico Box

Legionnaires v NRF Veterans Div 3 - 1-4

Beachlands Maraetai Junior Rugby



RESULTS FROM 24 MAY

U15 Girls Rippa v Pakuranga 80-25, POD: Addison Bellow, ROD: Ayla Dromgool

Y4 Navy v Patumahoe Y4 White 30-65, POD: Samson Setu, TOD: Cruz Jacobs

Y3 Navy v Patumahoe Y3 Yellow 45-35, POD: Jaxon Good, TOD: Jax Carden

Y5 Orange v Maramarua 20-40, POD: Alec Ananiev

U9 Mako Monkeys v Papatoetoe Bears 40-70, POD: Evie Birchall, ROD: Madison Wynyard

Y3 Orange (Auckland Rugby Festival) v Patumahoe Y3 Blue 10-110, POD: Maru

Y7 Navy v Waiuku Green 36-12, POD: Cian Overend

Y8 Navy v Manurewa White 0-75, POD: Leander Beatles, TOD: Elijah Becker

Y5 Navy v Karaka Chiefs 35-20, POD: Zion Hakopa, TOD: Kiran Narula

Y6 Orange v Te Kauwhata 55-20, POD: Malakai Morgan

U11 Girls Rippa - Game 1: v Papatoetoe 30-80, Game 2: v Waitakere 65-40, POD: Margo Khyn, ROD: Hayley Maxwell

U11 Navy v Patumahoe 45-40, POD: Whole Team, TOD: Ryan McWatt

Y2 Orange v BMRC Navy 85-55, POD: Cohen Dromgool, ROD: Kora Stevenson

Y2 Navy v BMRC Orange 55-85, POD: Lola Van Oosten, ROD: Beau McCarroll

Pohutukawa Coast Netball Club



RESULTS FROM 24 MAY

S1 v Livewires Kauri T1 - Lost 27 - 52

S2 v Shelly Park S3 - Won 43 - 6

S3 v Mellons Bay S2 - Won 31 - 20

S4 v Pakuranga United Senior Jade - Lost 14 - 36

S5 v Sunnyhills S5 - Lost 22 - 29

J1 v Sunnyhills Rimu - Lost 9 - 36 - POD Mila Martinovich

J2 v Pakuranga United Kahu - Lost 1 - 18 - POD Brier Dickson & Tegan Cleary

J3 v Wakaaranga Weka - Won 13 - 7

J4 v Sunnyhills Kauri - Lost 4 - 8 - POD Emilia Meszaros

J5 v Sunnyhills Kauri - WBD

Y6 Fantails - POD Sammy, Awhi Nicole

Y5 Kiwi - POD Mirka Warrington

Clevedon Football Club



RESULTS FROM 24 MAY

Crocs U5 POD: Liam Attwood, Merit Award: Ralph Malcolm

Chaos U5 POD: Owen Potter

Cheetahs U6 v POD: Hugh Tucker, Merit Award: Dylan Nurse

Cannons U6 POD: Blake Dumper, Merit Award: Pippa Howlett

Comets U7 POD: Hugh Potter, Merit Award: Blake Ball

Chasers U7 POD: Kiara Bult, Merit Award: Stella Hellaby

Coyotes U7 POD: Dan Ormand, Merit Award: Uzayr Alam

Cardinals U8 POD: Cash Peita, Merit Award: Xavier Barnes

Chargers U8 POD: Mats Carlin, Merit Award: Bethan Nurse

Cadets U9 v Waiuku AFC Thunder POD: Lola Spencer, Merit Award: Louis Farrell

Chiefs U10 v Mangere United FC Ash - POD: Fergus Nielsen-Vickers, Merit Award: Joe Reidel

Colts U12 v Manurewa AFC Tigers - POD: Jap Dhanoa, Merit Award: Adi White

NZ's most trusted ventilation

3 YEARS IN A ROW!



hrv.co.nz | michael.chong@hrv.co.nz | 021 400 592



FOOD AND ENTERTAINMENT



Domino's
Valid at Domino's Beachlands only and expires 30 June 2025.

Bring in this ad to get a **FREE** Garlic Bread or 1.5L drink with your next pickup order over \$25.

JOIN THE CLUB!
Boating or Community memberships available.
Bar open from 4pm Thurs-Sun. Social events. Function hire.
www.maraetaiboatclub.org.nz



CAVIAR KITCHEN
Dine over the water at MBBC
Thurs-Sun from 5pm;
Sat & Sun from 10am for brunch
For bookings 021 249 1660



DINING • WEDDINGS • FUNCTIONS
424 Creightons Rd, Clevedon, Auckland 2582
PH 09 292 8845 • enquiries@vinalto.co.nz
OPEN: Thur and Fri 5pm - late
Saturday 12pm - late, Sunday 12pm -4pm



JOHN HILL
— ESTATE —
Open: Thus-Sun, 12pm until close
(09) 292 4929
johnhillestate.co.nz
Cnr John Hill & White Roads, Hunua





(09) 536 4151
Monday to Friday 10:00am - 11:00pm
Saturday & Sunday 8:00am - 11:00pm
44 Third View Ave, Beachlands
The best of European Cuisine



Pepperjacks
Tuesday - Thursday 9am-8pm | Friday - Sunday 9am-9pm
Happy hour: 3-6pm, Tuesday-Sunday
09 536 4659
manager@pepperjacks.co.nz | pepperjacks.co.nz
190 Jack Lachlan Drive, Beachlands

TUESDAY:
Gold Card Discount
WEDNESDAY
Steak Night \$20

HALLERTAU CLEVEDON
26 CLEVEDON-KAWAKAWA RD, CLEVEDON, AUCKLAND — CLEVEDON@HALLERTAU.CO.NZ — 09 869 2989
OPEN — MON & TUE: CLOSED — WED & THU: 4PM-10PM — FRI & SAT: 12PM-10PM — SUN: 11AM-9PM



THE FRANKLIN
TAPHOUSE & KITCHEN
Explore a wide range of food options, includes everyday specials to set menu & platters
Open 7 days from 12pm-late
Woodfired pizzas
Fri/Sat/Sun 12pm-late
BOOKINGS RECOMMENDED
Ph: 536 5978
www.thefranklinpub.co.nz



OPENING HOURS
Tuesday - Sunday: 5-9pm
For bookings or takeaway: 09 217 1684 | 021 2144790
44 Kouka Road, Beachlands
 [pinocchionz](#)  Pinocchio Pizza Pasta & more



BRACU ESTATE
(09) 236 1030 | bracu.co.nz
Auckland's Finest Country Dining Experience
Thursday - Sunday: Lunch from 12:00PM
Thursday - Saturday: Dinner from 5:30PM
49 Main Road, Bombay



OPENING HOURS
Tuesday - Thursday: 3-10pm
Friday - Sunday: 12pm till late
027 208 6942
190 Jack Lachlan, Pine Harbour

Small sharing plates
Cocktails
Marina view

Advertise here to be seen by more than 6,500 households each week!
Only \$20+gst weekly
Contact advertising@pctimes.co.nz for details.



QUAY
ART GALLERY
presents exhibition by
ANDREEA IONELA
Berindei
‘New Shores’ – 8 to 30 June
Opening
Saturday 7 June
2.00 – 4.00pm
7a Whitford Wharf Road, Whitford Village
quaygallery.co.nz





OUR PROFESSIONAL TEAM IS HAPPY TO HELP WITH:

- Septic tank inspections, empties and cleans
- Wastewater system maintenance and disposal
- Grease trap cleaning

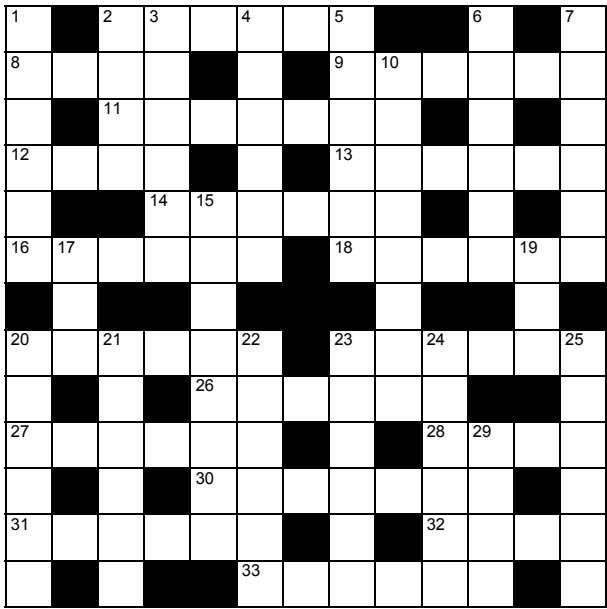
We can help you ensure you comply with Auckland Council Healthy Waters requirements and the relevant paperwork.

We are proudly NZ-owned with a friendly team who truly care about doing a good job for you.

0800 493 768
www.hydrovac.co.nz



RAYWHITE BEACHLANDS CROSSWORD



Brianne Bignell
021 400 979
brianne.bignell@raywhite.com

RayWhite

Across

- 2. Door that moves on a track (6)
- 8. Musical instrument (4)
- 9. Abstain from (6)
- 11. Copy of an original (7)
- 12. Understood (4)
- 13. Painful experience (6)
- 14. On a ship or train (6)
- 16. Be troublesome (4,2)
- 18. Walkover (6)
- 20. Fit for consumption (6)
- 23. Become ill (6)
- 26. Informant (colloq) (6)
- 27. Faith (6)
- 28. Upon (4)
- 30. Uncouth behaviour (7)
- 31. Beam above a door or window (6)
- 32. Melody (4)
- 33. Couch that can be come a bed (6)

Down

- 1. Model (4-2)
- 2. Painful (4)
- 3. Allowance (6)
- 4. Glob (6)
- 5. Register (6)
- 6. Strand (6)
- 7. Dozen (6)
- 10. Cynical (8)
- 15. Dead centre (5,3)
- 17. Cap (3)
- 19. Perjure (3)
- 20. Prepare for burial (6)
- 21. Away from the coast (6)
- 22. Wrap (6)
- 23. Short and thick (6)
- 24. Unsullied (6)
- 25. Youngster (colloq) (6)
- 29. Dull, heavy sound (4)

Answers on page 10

CATCH OF THE WEEK PHOTO COMPETITION

Send us your fishing photos this summer and be in to win a \$50 Top Catch voucher from GAS Maraetai each week!
The overall season winner will win a brand new rod and reel sponsored by GAS Maraetai.



Eight-year-old Hunter Stewart was out fishing with his Pa and family on the *Lazy Budgie*, just at the entrance of the Whangarei Harbour. Using a Shimano 6' with Shimano 3500 spinning reel and 12kg braid he managed to pull in not one, but two good size snapper fully unaided.

TO ENTER, EMAIL YOUR PHOTO TO LIZ@GASMARAEAI.CO.NZ
include your full name, plus details about your catch (where the fish was caught, boat name, special gear used, what you did with the fish after it was caught etc).

BARFOOT THOMPSON &
Licensed REAA 2008

Student Voice

LOCAL STUDENTS' NEWS, VIEWS & LITERARY TALENT

This column features news, views and literary talents of students from Beachlands, Maraetai, Clevedon, Brookby, Hunua, Paparimu, Orere and Ardmore Schools.

One student featured each week will be presented with a certificate and a \$20 book voucher, thanks to Barfoot & Thompson's Beachlands and Whitford branches.

We recently went on a school camp at Lakewood Lodge. We all had an amazing time! We had a big variety of activities to do - 9 in total! What I liked the most was probably the kayaking. We went around the lake, playing tag, also holding the kayaks either side of us in a straight line while someone switched positions trying not to fall in.

The mud run was gross but fun. It was like someone chucked mud everywhere on an obstacle course and hoped for the best. There was a slide into a massive mud river, multiple beams you go under or over, tyres that have probably been in a basement for 20 years that you go through and then another mud river that had a net that you cross over into...MORE MUD!

The food was great and healthy. Nachos, burgers, spaghetti on toast and also great vegetarian options! In the end the chef came out and we cheered for her!

At Lakewood, we had sleeping barns, cabins and rooms. Heaps of places to sleep after your activities from the day. The boy's place to sleep was in a barn with divided sections. Each section had about 7-12 beds - heaps of space to fall off your bed at night. The boys barn may seem nice but wait until you hear the girls...The girl's cabin was more like a house with lots of beds. They had windows, coloured beds and a short walk from the kitchen. While the boys had to walk up the hill (about as steep as that street in Dunedin) to get their food.

The camp was absolutely great! I recommend your school going there because it's fun, exciting and AMAZING!!!

- by Lucas Cadwallader, 10 years old, Brookby School

Fifty Shades of Purr: Mr Grey wins hearts of Woolworths shoppers

CONTINUED FROM PAGE 1

When they moved to Thistle Close, he really began to make a name for himself, visiting other people’s homes on a regular basis.

“All the neighbours knew Mr. Grey. And they were all in love with him, they didn’t kick him out. I went to pick him up at the neighborbour’s house and there he is sprawled out on their kitchen floor. They were like, ‘oh, we want him to come’. He’s just got that nature, he just loves everybody.”

The family moved into their Seventh View Ave home about a month ago, which is when Mr Grey decided to take things to the next level by hanging out at Woolworths, even going so far as to wander throughout the store, where he has now been given ‘boundaries’ and allowed no further than the checkout area, according to Catherine.

“Now all the people there know me,” she says.

Mr Grey was adopted from a cat rescue shelter in Rotorua when he was a kitten. Catherine says his

extroverted personality was not apparent from the outset. “The funny thing is, when we had him as a kitten, he had no personality. Even the people we adopted him from said ‘this cat’s got no personality’. He just did nothing. Who knew he would turn out to be this absolute charmer - Mr Personality.”

Catherine says Mr Grey is a lovely cat who gets on well with his fellow feline housemate Jingles, who rarely leaves the house. Unlike most cats, Mr Grey seems to enjoy being outside in the rain, and often comes home covered in mud.

“As soon as there’s rain, every morning we know because he comes into our room and he sits straight on top of me and he’s like sopping wet,” says Catherine.

He also has a nose for the finer things in life, popping in to inspect the display cabinets at Paul Taylor Jewellers occasionally.

Mr Grey has now amassed 160 followers on his own Facebook page - The Woolworths Beachlands Cat - where people can post photos of his antics.

Professionals & Trades

BUILDERS

Kimpton
CONSTRUCTION

NEW BUILDS | RENOVATIONS | LANDSCAPING

A friendly, quality focused team, skilled in all residential construction. Here to help, from concept to creation.

Contact Craig Kimpton
021 154 6019 | craig@kimptonconstruction.co.nz

DENTAL

Great Smiles. Better Health.

At Anthony Hunt Dental we are proud to have been serving our community since 2011.

Leading the way using the latest techniques and technology, we create great smiles and better health for the whole family.



(09) 292 9071 smile@ahdental.co.nz
52 Papakura-Clevedon Road
Clevedon
www.ahdental.co.nz

ANTHONY HUNT
Dental
GREAT SMILES • BETTER HEALTH

Classified Ads

ACCOMMODATION

FLAT TO RENT

Maraetai Heights Rd. Maraetai. Spacious 1 Bedroom, with separate lounge, laundry and bathroom. Own under-cover carport and a peep of the sea. Partly furnished (if required). Long term preferred. \$380.00 Ph: Lyn 027 616 2220

BUY/SELL

JEWELLERY WANTED TO BUY

Old gold, rings, broken chains, unwanted jewellery for scrap etc. Paul Taylor Jewellers, Shop C7 Pohutukawa Coast Shopping Center. Ph 536 4200

FOR SALE

IGNITION FIREWOOD

Quality firewood bulk and bagged delivered. Kiln dried, clean, shed stored firewood. Order online at www.ignitionfirewood.co.nz. Logs and trees wanted.

WORK WANTED

HANDYMAN

You name it... renovations, gardening, retaining, fencing, landscaping, trellis, light building and maintenance work. Ph Gary on 021 903 020 or 536 6358.

READY GRASS/ LANDSCAPING

Specialising in ready-grass, seeding, lawn levelling, turf cutting & landscaping. Locally based Ph: Adam on 022 015 2805.

RENOVATIONS

Bathrooms, kitchens, toilets - build, tile, glass, flooring, plaster and paint. Start to finish. Exp. builder. Refs avail. Ph: Gary 021 903 020 or 536-6358. Oakes Build Landscape Maintenance. www.oakes.nz.

ROSIE’S GARDENING SERVICES

Weeding, tilling, pruning, weed eating, weed spraying. Hedge trimming. Garden tidy ups, garden rubbish removal. 26 years of plant knowledge. Phone 02102335998.

MOWER AND CHAINSAW REPAIRS

All small engine repairs, mowers ride-on mowers, chainsaws, weedtrimmers, & chain saw sharpening. No job too small. Free pick-up local area only. Ph: 536 5621 or mob 027 308 7777.

PAINTING/PLASTERING

Interior and exterior quality plastering and painting. Ph: Gary 021 903 020 or 536 6358.

Professionals & Trades

BOATING & MARINE

Ovlov Marine Pine Harbour 09 536 5249 www.ovlov.co.nz

Sales and Service of outboard motors, inboards, sterndrives and IPS.

Situated in Pine Harbour Marina and mobile we can care for your vessel be it big or small.

Contact the team on 536 5249 or email on joe@ovlov.co.nz for service enquiries and partsph@ovlov.co.nz for spare parts.

YAMAHA **TRAC** **VOLVO PENTA**

CROSSWORD ANSWERS

Across: 2. Slider, 8. Oboe, 9. Eschew, 11. Replica, 12. Knew, 13. Ordeal, 14. Aboard, 16. Play up, 18. Doddle, 20. Edible, 23. Sicken, 26. Snitch, 27. Belief, 28. Atop, 30. Yobbish, 31. Lintel, 32. Tune, 33. Daybed. **Down:** 1. Mock-up, 2. Sore, 3. Leeway, 4. Dollop, 5. Record, 6. Thread, 7. Twelve, 10. Sardonic, 15. Bull’s eye, 17. Lid, 19. Lie, 20. Embalm, 21. Inland, 22. Enfold, 23. Stubby, 24. Chaste, 25. Nipper, 29. Thud.

Read online
www.pctimes.co.nz



what's on?

Looking for a new way to entertain yourself? Our new online version of the community calendar gives you daily listings of all the great recreational activities the Coast has to offer.

pctimes.co.nz/community-calendar



smile dental
giving you one more reason to smile

QUALITY AFFORDABLE FAMILY DENTISTRY

***FREE dental examinations**

*excl. xrays



129 Beachlands Rd, Beachlands, Auckland

www.smiledental.co.nz 09 302 0808

Professionals & Trades

DENTAL

YOUR NEW SMILE IS BRACE-FREE!

Invisalign

clear aligners

- ✓ No metal
- ✓ Comfortable & discreet
- ✓ For adults & teens

• Experienced dentists
• 3D scan & treatment plan on first visit
• Flexible payment options



www.marinadentists.co.nz
09-535-1074

MARINA DENTISTS

MECHANICAL REPAIRS

AUTOWORKS

SERVICE & TYRE CENTRE

Local East Tamaki workshop providing full mechanical services and repairs

- WOF • Tyres • Air Conditioning Repairs

Super Gold Card Supporter

78 Kerwyn Ave, East Tamaki | 09 274 3246

TREE SERVICES



Land Clearing
Tree Maintenance
Tree removal
Stump Grinding
Hedge Care

Phone Doug
021537171 • 09 5378595

info@dstrees.co.nz
www.dstrees.co.nz

DRAINAGE & EARTHWORKS



Drainage Vision Limited

www.drainagevision.co.nz
Mike 027 593 0326

• Drain Unblocking • CCTV Inspections • Certified Drainlayer
Vacuum Trucks • Pipe & Cable Locations

ROOFING



ROOFING & SPOUTING NZ LTD

Delivering Quality & Durability

RE-ROOFING | NEW ROOFS | ROOF COATINGS
CONCRETE ROOF TILE SPECIALIST | CONCRETE TILE REPAIRS
GUTTER REPLACEMENT | INTERNAL GUTTER CONVERSION

0800 766 350 | www.roofingnz.co.nz | info@roofingnz.co.nz



MONIER
MONIER ROOFING SPECIALIST,
SUPPLIER & INSTALLER



JESSEP CONTRACTING

TREE CARE & REMOVALS

CALL PHIL FOR A FREE QUOTE
022 607 4455

CHECK OUT
jessepcontracting.co.nz

Your Local Arborists

Your problem is our specialty!

- Tree Care, fine pruning and removals
- Shelterbelt removals and chipping
- Palm cleaning and hedge trimming
- Hedge trimming
- Tree Light installations
- Small Hiab Lift and Shifts

HOUSE CLEANING



NoMoss

Pressure Washing Solutions

From the Coast, For the Coast

www.nomoss.co.nz | service@nomoss.co.nz | 021 105 0739

- House Washing
- Roof Treatments
- Softwash

SCAFFOLDING

QUALITY | RELIABLE | WHITFORD BASED | LAYHER SCAFFOLD SYSTEM



DTS WRIGHT

SCAFFOLDING

Contact Dylan 021 239 4276 | dtswrightsc scaffolding@gmail.com

TYRES



TYREGUARD

PROTECTING YOUR JOURNEY

YOUR TRUE TYRE PROFESSIONAL ON THE COAST

- Friendly Reliable Service
- Locally Owned & Operated
- Over 20 Years Experience
- For ALL Your Tyre Needs

Agricultural, Batteries, Car / Passenger, Earthmover, Mag & Tyre Packages, Puncture Repairs, Truck / Commercial, Wheel Balancing, 4WD / Off Road, 24/7 After-Hours Callout

Call Mike 021 901 034 | sales@tyreguard.co.nz | www.tyreguard.co.nz

MEAT SUPPLIER



Meatworx

AUCKLAND, NEW ZEALAND

- For all your homekill and hunting processing.
- Vacuum packing standard & delivery available.
- Qualified butchers, expert advice, friendly service.
- Sausages (gluten free available), bacon, salami, biersticks, biltong, smoking and curing.

027 632 8979
admin@meatworx.co.nz
www.meatworx.co.nz

SURVEYOR

SURVEY PLUS

LAND SURVEYING

Your local Pohutukawa Coast Surveyor

admin@surveyplus.co.nz | 020 4 SURVEY (020 4 787839)

VETERINARY

Franklin Vets Beachlands

1/43 Kouka Road,
Pohutukawa Coast Shopping Centre
538 0010 | beachlands@fvs.co.nz

Mon-Fri 8am-6pm
Sat 9am-1pm

www.franklinvets.co.nz

Come meet our local team and tour our Best Practice & Cat Friendly accredited facility



FranklinVets

MECHANICAL REPAIRS



POHUTUKAWA MOTORS

.co.nz

AA APPROVED REPAIRER,
AA BATTERY STOCKIST
MTA ASSURED

WE ARE YOUR LOCAL, HONEST AND TRUSTED AUTOMOTIVE REPAIRER. POP DOWN AND SEE US. WE'LL LOOK AFTER YOU AND YOUR VEHICLE.

- ALL MECHANICAL REPAIRS
- WOF
- BRAKES
- TYRES
- AUTOMOTIVE AIRCON SERVICING

57 THIRD VIEW AVENUE, BEACHLANDS
09 536 6664



TREE SERVICES

CALL NATHAN 021 196 6509

CHIPPING

LAND CLEARING

HEDGE TRIMMING



COASTAL CUTTERS

TREE CARE ON THE COAST

TREE PRUNING

TREE REMOVAL

STUMP GRINDING

FIND US ON FACEBOOK coastalcutters@hotmail.com

POHUTUKAWA COAST VETS

LOCALLY OWNED & OPERATED IN BEACHLANDS

Book an appointment
Ph: 09 320 1472
Or book online
www.pcvets.co.nz

reception@pcvets.co.nz | 43 Wakelin Rd, Beachlands

WATER



Coastal

PUREWATER LTD

The highest quality water for all your household, property and commercial needs

Ask for our pure water by name

Manukau Quarries LP
885 Whitford-Maraetai Road, Beachlands | 09 2630220

MARAETAI AUTOMOTIVE


All Makes & Models | All Types of Repairs

Petrol - Diesel - European Vehicles - Loan Cars

- Servicing • WOF • Brakes • Clutches • Wheel Alignments
- Tyres • Transmission Services • Batteries • Welding
- Cambelts • CV Joints • Auto Electrical Repairs

131 Maraetai Drive, Maraetai
Ph: 536 6542

ALL WORK GUARANTEED
HOURS: Mon - Fri: 8am-5pm



Advertise here for \$30 weekly
or \$35 fortnightly.

Ph: 021 026 14467 or email
advertising@pctimes.co.nz

BUSINESS DIRECTORY

LIST YOUR BUSINESS ON THIS PAGE FOR LESS THAN \$10 PER WEEK

A 6-month, single line listing costs just \$200+gst

advertising@pctimes.co.nz | 021 026 14467

ACCOUNTING SERVICES		
Probiz Systems Ltd, Sharon Bramley	021 122 8059 OR	530 8036
Diane Myers CA, diane@myersca.co.nz		292 9470
Business Allsorts, MYOB & Xero Experts		536 5850
Peat Johnson Murray		869 2091
AERIALS, TV & HOME THEATRE		
Auckland Wide Electrical		536 6800, 021 998 665
AGGREGATES		
Beachlands Mitre 10		536 6567
APPLIANCE SERVICING		
Axial appliance servicing Service@axial.co.nz		573 0877
Appliance Wizard Ltd Ph Paul		0275 784 226
ARCHITECTS		
Peter Diprose www.diprose.co.nz		530 9065 or 021 125 1498
ARCHITECTURAL PLAN & DESIGN		
Ross J Willoughby		530 9358
RBG Ltd		027 260 8005
AUTO ELECTRICIAN		
Mobile Auto & Marine		0800 662 352
BARBERS		
Joe's Barbershop		536 7265
BEAUTY		
Xtreme Beauty & Barbers		600 2325 or 021 992 686
www.xtremebeauty.co.nz		
BED & BREAKFAST		
Brookwood Lodge, Beachlands.		536 6975 or 0274 796 453
BLIND SERVICES		
Ven Lu Ree Blind Services - For all New Blinds - Plus Blind Cleaning and Repairs	www.venlureeblinds.co.nz	0800 999 229
Onsite blind cleaning & repairs - plus new blinds	info@onsiteblinds.co.nz	0508 253 262
BOOKKEEPERS		
Business Allsorts, MYOB & Xero Experts		536 5850
BUILDERS		
Bryant Builders Ltd	027 493 5507 or	027 692 8777
GH Building		021 564 263
BUILDERS' SUPPLIES		
Morton Timber Co. Clevedon		292 8656
Beachlands Mitre 10		536 6567
CARPET CLEANING		
Aladdin Carpet Cleaning, Phone Sheryll		09 537 4320
CELEBRANT		
Ceremonies by Diana, www.celebrantdiana.co.nz		021 152 9925
CHAINSAW SALES/SERVICE/REPAIRS		
Greenmount Mowers & Chainsaws		09 970 4816
COMPUTER REPAIR		
Wi-Fi & Internet, Home and Office IT Support		
Call Graeme Thomas		027 429 0677
CONCRETE SERVICES		
Aaron Ross Concreting		0210 233 2673
Murray Douglas Limited		027 498 5267
Pro-Floors Concrete Ltd, Call Grant		0274 951 280
COSTUME HIRE		
Clevedon Costumes and Vintage Apparel		022 018 2711
DENTISTS		
Whitford Dental Group		530 8461
- Dr Rick Parfitt, Dr Alex Lindsay & Dr Maad Youhana		
- Hygienist/O.H.T - Latoya Conley		530 8461
Anthony Hunt Dental Ltd, Dr Anthony Hunt, Clevedon		292 9071
Marina Dentists Pine Harbour		536 4361
Smile Dental Beachlands		
- Your local dentist. New paitents welcome.		022 8888 171
- Free examination since 1996		09 302 0808
www.smiledental.co.nz		0800 4 smile
DIGGER & TRUCK HIRE		
The Little Digger	027 278 0335 or	536 4424
Digger Landscapes www.diggerlandscapes.nz		021 415 832
Bizzy Bobcats & Diggers – call Mark		027 494 4414
DOCTORS		
Beachlands Medical Centre		536 6006

DRAINLAYERS		
Vibe Earthmovers and Drainage	call Vincent	0272 225 377
Probuilt Earthworks Drainage	call Gary	021 617 611
Drainage Vision Ltd	call Mike Adams	027 593 0326
Certified drainlayer, CCTV inspections, drain unblocking		
EARLY CHILDHOOD EDUCATION		
Whitford Early Learning Centre		530 8726
Clevedon Kidz Early Childhood Centre		292 8358
EARTH MOVING CONTRACTORS		
Riordan Contracting	09 530 9429 OR	027 430 9429
Pohutukawa Coast Earthmoving, Grant		027 475 8468
www.brookbycontracting.co.nz Earthworks/Cartage/Drilling		027 530 9290
ELECTRICIANS		
Auckland Electrical & Pump Services		536 4074,027 4741 579
Pohutukawa Electrical		536 4076, mob 021 769 964
Positive Electrical Services		021 801 606
ENGINEERS - CIVIL/ENVIRONMENTAL/STRUCTURAL		
Fraser Thomas Ltd		278 7078
FENCING CONTRACTORS		
Craig McLeod		027 292 5844
White Fencing:		292 8064, 0274 957 868
- rural fencing, retaining walls		www.whitefencing.co.nz
FLOORING		
Nicks Floor Sanding		536 6916, Mobile 021 875 456
FLORISTS		
Clevedon Flowers, www.clevedonflowers.co.nz		292 9540
FOUNDATIONS & FLOOR SLABS		
Pro-Floors Concrete Ltd, Call Grant		0274 951 280
FUNERAL DIRECTORS		
Resthaven Funeral Services		
Rachel Benns & Raewyn Proctor		533 7493, 267 2530
Ensom and Biswas Funerals		
John Ensom & Rav Biswas		299 6646 or 524 6765
Fountains Funeral Directors & Monumentalists -		
Papakura, Franklin and Manurewa		298 2957
Howick Funeral Home Robert Johnstone - Mark Rowley		534 7300
Souly Funerals Beachlands		0800 47 68 59
GARAGE DOORS		
Repairs & Service, Metro Garage Doors		263 6608
GARDEN CENTRE		
Beachlands Mitre 10		536 6567
GEOTECHNICAL SERVICES		
Fraser Thomas Ltd		278 7078
GLASS AND GLAZING		
Howick Glass		535 4180
GUTTER CLEANING		
Skyhigh Roof and Gutter Cleaning Ltd		
Website: www.skyhigh.nz		021 951 719
HAIRDRESSING		
Cooper Hairdressing, 16 Te Pene Rd, Maraetai		027 329 1781
HANDYMAN SERVICES		
Local Handyman:		536 5050 or 021 156 7370
Oakes Build Landscape Maintenance,www.oakes.nz		021 903 020
HEAT PUMPS		
Auckland Wide Electrical		536 6800
AES - Auckland Energy Solutions		
Website: www.aes.nz		575 1191
Varcoe Air Conditioning & Heat Pumps		
Your local specialists		
www.varcoe.co.nz info@varcoe.co.nz		0800 088 888
HOUSE WASHING		
Just Clean Me, Exterior Cleaning Services		022 089 2383
House washing, gutter cleaning, roof treatments, water blasting.		
No Moss, Pressure Washing Solutions		021 105 0739
INTERIOR DESIGN		
I Like Space Ltd		021 281 1610
JEWELLER		
Paul Taylor Manufacturing Jewellers		536 4200
Repairs/Remodelling/Valuations/Insurance Replacements		
Shop C/7, 129 Beachlands Rd, Pohutukawa Coast Shopping Centre		

KITCHENS		
Kitchen Craft Ltd, Ph Warren		09 274 4221
for Sizzling Kitchen Design & Cabinetry	www.kitchencraft.co.nz	
LANDSCAPING		
Eastside Landscapes		021 484 158
LAUNDROMAT		
Kiwi Laundry Co, www.kiwilaundryco.co.nz		022 463 8416
7 DAYS at GAS Maraetai, 131 Maraetai Drive, Maraetai		536 4218
LAWNMOWING & GARDENING SERVICES		
JIMS MOWING Beachlands - Frank		027 415 3657
Greenacres – Stephen Howe	292 4165 or	021 2266 753
Prolawns (Beachlands based) Shane		021 746 887
R&R Garden ServicesRichie: 021 917 332,Roanne: 027 252 8183		
LAWNMOWER SALES/SERVICE/REPAIRS		
B'inds/M'tai mower/chainsaw repairs		536 5621 or 027 308 7777
Greenmount Mowers & Chainsaws		09 970 4816
LEGAL SERVICES		
Sutcliffe Matson Law		09 279 8351 or 021 327 030
LOCKSMITHS		
Local Locksmith - Tony		536 5050 or 021 156 7370
Armstrong Smarter Security		0800 506 111
MARINE AND BOATING		
Ovlov Marine Pine Harbour LTD		536 5249
MECHANICAL REPAIRS		
Maraetai Automotive		536 6542
Pohutukawa Motors, 57 Third View Ave, Beachlands		536 6664
Garaway Autos		022 395 6185
MIRRORS		
Howick Glass		535 4180
OUTBOARD REPAIRS/ MARINE ENGINEERING		
Eastern Marine - Mercury Certified Service Centre – Outboards, sterndrive, petrol & diesel.		536 6252
PAINTERS & DECORATORS		
East Auckland Painting Ltd		027 619 2619
Paint, waterblasting, plaster, tidy up removal,		027 525 4024
aggregate sand delivery. Joel@insulape.co.nz		
Reliable Painters - No Job Too Big or Small		021 151 8368
PEST CONTROL		
Coastal Pest Solutions (including rats, rabbits,possums, pest birds, wasps & bees)		536 6020 or 0273 932 125
Professional Pest Control		536 6690 or 021 078 3622
PET ACCOMMODATION		
Pets at Whitford Spa and Stay (PAWSS)		530 8860
PHARMACIES		
Unichem Beachlands Pharmacy		536 6500, fx 536 6590
PHYSIOTHERAPIST		
Beachlands Physio beachlandsphysio.co.nz		09 222 4120
PILATES		
Krystel Jeffery www.mypilatesstudio.co.nz		021 646 729
PLUMBERS		
Dynamo Plumbing		0800 175 988
BF Brown Plumbing & Drainlaying		0800 477 455
PLUMBERS & GASFITTERS		
Ashby Plumbing & Gas		292 2445 or 0272 553 499
PROPERTY MANAGEMENT		
Rent People Ltd		0800 426 580
Ray White Lighthouse Licensed Real Estate		536 7011
Barfoot & Thompson Beachlands		536 4990
PUMP SALES & REPAIRS		
Auckland Electrical & Pump Services		536 4074, 0274 741 579
Malmaks Water Shop		530 8872, 021 353 158
Allwater Pumps and Supplies Ltd	09 536 5444, 027 536 5444	
Clevedon Pumps & Filtration		027 479 7741
QUARRY		
Manukau Quarries		263 0220
REAL ESTATE AGENTS		
Barfoot & Thompson Beachlands		536 4990
Barfoot & Thompson Whitford		530 8292
RE/MAX Clevedon		292 8388
Ray White Lighthouse Licensed Real Estate		536 7011

ROOF PAINTING SERVICES		
Master Tradesman. Text details for fast service:		027 517 8494
Visit our website: www.5starroofpainting.co.nz		
ROOF SOFTWASHING		
Skyhigh Roof and Gutter Cleaning Ltd		
Website: www.skyhigh.nz		021 951 719
ROOFING SERVICES		
Alba Roofing		021 584 530
Roofing & Spouting NZ Ltd		021 766 260
SCAFFOLDING		
Scaffold Connect Ltd	021 235 5963 or	09 576 5879
DTS Wright Scaffolding Ltd		021 239 4276
SECURITY SYSTEMS		
ADS Security Ltd (alarms & monitoring)		536 6860
Armstrong Smarter Security and Alarms		09 274 0999
SEPTIC TANK CLEANING		
SST Services phone Rob		09 2947611 or 0274 967430
SURVEYORS - LAND		
McInnes, Read & Lucas Ltd		298 7288
Fraser Thomas Ltd		278 7078
Churchill Land Development Services Ltd		273 4182
Survey Plus Ltd		020 4 SURVEY (020 4 787839)
TAXIS/TRANSPORT/SHUTTLES		
Coast Shuttle - local hire & airport trips		536 6488 or 0274 722 613
Omana Shuttles - Airport Transfers		536 5935
Driving Miss Daisy		09 534 7712 or 021 174 9999
TRAVEL - INTERNATIONAL & DOMESTIC		
Clevedon Travel Brokers chrissyashby@ttb.co.nz		027 273 9701
Travelselect Beachlands call Mark or Sam		536 6730
Beachlands Travel Broker phone Nicole		021 1769791
nicole.ambrusfy@thetravelbrokers.co.nz		
TREE SERVICES		
Coastal Cutters - coastalcutters@hotmail.com		021 196 6509
Jessep Contracting - JessepContracting.co.nz		022 607 4455
TYRES - SALES & SERVICE		
Maraetai Automotive		536 6542
Pohutukawa Motors		536 6664
Tyre Guard - Mobile Tyre Service, Call Mike		021 901 034
UPHOLSTERY & CANVAS		
Eastern Cover Centre. Boat & Outdoor Furniture Covers		535 7524
VALUERS - PROPERTY		
Property Valuations Ltd, Papakura		299 7406
VETERINARY SERVICES		
Franklin Vets - Pohutukawa Coast Shopping Centre,		538 0010
Beachlands, Open: Mon-Fri: 8am-6pm Sat: 9am-1pm		
Pohutukawa Coast Vets - 43 Wakelin Rd, Beachlands		320 1472
Open: Mon-Fri: 8am-6pm Sat: 9am-12pm		
WALLPAPERING		
Lucy Cui		536 5899 or 021 174 8466
WATER DELIVERY		
Beachlands/Maraetai Water Supply		273 9763
Clevedon Water		292 8099
Whitford Water Supplies		530 8164
Maraetai Blue Ltd	536 6437, 027 536 6437	
Carlton Haulage		0800 420 246
Coastal Water Cartage		0508 262 7825
WET AZZ – www.wetazz.co.nz	0800 WET AZZ (0800 938 299)	
A Plus Water		021 0727 163
PROWATER - Support Local, Ph Shane/Sheridan		021 530 727
WATER TANK CLEANING & REPAIRS		
Maraetai Blue Tank Cleaning	Call Jacob	021 029 84170
Clevedon Pumps & Filtration		027 479 7741
WATER TREATMENT		
Anthony Preston Ltd		09 534 5127
Malmaks Water Shop		530 8872, 021 470 588
Allwater Pumps and Supplies Ltd	09 536 5444, 027 536 5444	
Clevedon Pumps & Filtration		027 479 7741
WEDDING VENUE		
Te Puru Centre		536 5360
Maraetai Beach Boating Club		536 6649

BRIANNE BIGNELL
Awarded
CHAIRMAN'S
ELITE
PERFORMER 23-24
Top 1% of the Ray White Group

Awarded
TONY FOUNTAIN
AUCTION EXCELLENCE 24-25

Team Brie

Premium Service | Premium Results

Brianne Bignell - (021) 400 979
Email: brianne.bignell@raywhite.com

Lighthouse Real Estate Limited - Licensed (REAA 2008)

2025 Barfoot & Thompson Awards



The awards night took place on Saturday 10th of May, with all attendees dressed to the nines!
We had members of our Beachlands team honoured with well-deserved recognition.

Congratulations to Nicolette Hale of Special Agents 003, Mike Deverell, and Nadine Bryant! 🏆

Nicolette Hale - Top Salesperson Beachlands Branch

Mike Deverell - #2 Top Individual Salesperson in the Eastern Beaches Region

Nadine Bryant - #8 Top Individual Salesperson in the Eastern Beaches Region

Wider company updates



Proud to be sponsoring the Barfoot & Thompson Young Authors Challenge once again in 2025, and this year's theme, "My Time Machine," invites young writers to unleash their creativity - from thrilling adventures and emotional reflections to futuristic sci-fi tales or poems.

In 2024, Barfoot & Thompson received over 900 entries, showcasing an incredible range of talent. This challenge continues to be a meaningful way for us to support creativity in schools and help nurture the next generation of Kiwi storytellers.

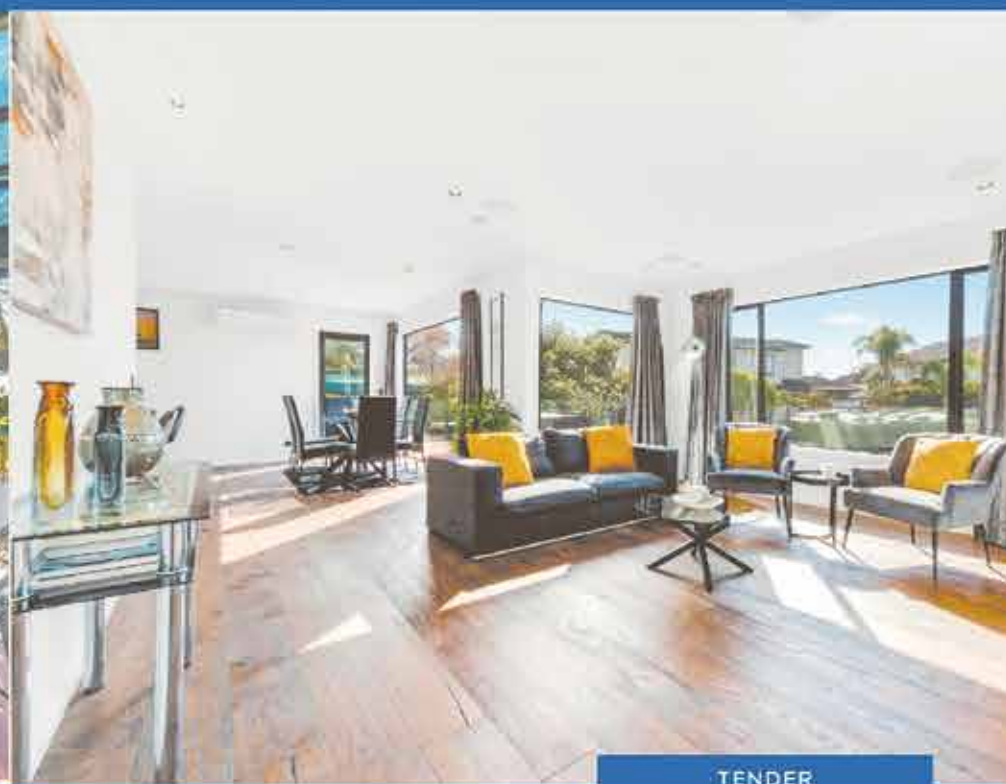
Recently, Barfoot & Thompson's funding has enabled Starship's Children's Therapy team to acquire two specialised P Pod seat support systems. These innovative seating systems are specifically designed to provide comfortable, highly adaptable, and safe support for young patients with complex postural needs, including those with conditions such as cerebral palsy and muscular dystrophy. We are proud to support the Starship Foundation's ongoing mission to improve healthcare outcomes for New Zealand children.



Barfoot & Thompson is proud to be a five-star partner of the Starship Foundation, and each year we show our gratitude to the amazing nurses at Starship Hospital as part of International Nurse's Day. This year some of our team had the privilege of visiting Starship Hospital and deliver a little appreciation to their amazing nurses.



NEW LISTING



TENDER

BEACHLANDS 3A ARAMINTA PLACE



TENDER

4.00pm Wednesday 11th June (unless sold prior)

VIEWING

003 OPEN HOME: SAT & SUN 1.00-1.30pm

barfoot.co.nz/912677

WATCH ME

- Approximately 172m² floor area
- Low maintenance brick & tile home
- Renovated with an array of upgrades
- Gorgeous new kitchen & outdoor area
- 2 Heat pumps & HRV ventilation system
- New concrete driveway & large shed
- 717m² (more or less) fenced section
- Watch 003 property tour online

SPECIAL AGENTS 003

Jenny Chandler 0204 000 2564

j.chandler@barfoot.co.nz

Ian Boswell 027 285 9314

Nicolette Hale 027 702 9157

Clare Dower 021 206 6822

BEACHLANDS 5A WATERFORD WAY



TENDER

4.00pm 5 Jun 2025 (unless sold prior)

VIEWING

Phone For Viewing Times

barfoot.co.nz/912681

A CUT ABOVE

Discreetly positioned away from the road, this approximately five-year-old home showcases bespoke design at its finest. Built to exceptional standards with a striking combination of weatherboard, brick and cedar, this residence offers modern sophistication with every detail carefully considered.

Mike Deverell

021 466 300

m.deverell@barfoot.co.nz

Nadine Bryant

021 265 7512

n.bryant@barfoot.co.nz



FOR SALE

WHITFORD 11 WAIKOPUA ROAD

FOR SALE

By Negotiation

VIEWING

Phone For Viewing Times

barfoot.co.nz/910784

Lucky Number Three - Lots 4, 5 & 8 at 11 Waikopua

New titles are now available for these 3 Sections:

Lot 4: 1.4704Ha \$1,325,000

Lot 5 - 1.8992Ha Price By Negotiation

Lot 8 - 1.8775Ha Price By Negotiation

Matthew Brown

027 549 4673

m.brown@barfoot.co.nz

Kathryn Morris

027 486 3488

k.morris@barfoot.co.nz

IS NOW A
GOOD TIME
TO SELL?
TALK TO
SOMEONE
WHO KNOWS.

WHAT'S YOUR HOME WORTH?
SCAN THE QR CODE TO
CONNECT WITH OUR
FRIENDLY TEAM



If you're thinking about selling your place, or even just wondering what it might be worth, have a chat with us. Our team can tell you what's happening in the property marketing around here, and they're only too happy to share that expertise with a free home appraisal, no strings attached.

If you do decide to sell, our skills and expertise - combined with the sales power of the entire Barfoot & Thompson network - will ensure you get the best possible result.