

'THE PAPER WITH THE MOST FOR THE COAST'

Local fire crews battle Waitawa blaze

A large fire at Waitawa Regional Park destroyed almost 4 acres of scrubland last weekend.

Crews from Kawakawa Bay and Clevedon were tasked to the fire just before midday on Saturday. The fire was quickly identified as being out of control, and the response escalated to involve eight appliances, one tanker, two helicopters, one command unit and over 60 personnel.

The blaze is alleged to have been started by somebody cooking on the beach, despite the total fire ban.

Crews from Kawakawa Bay, Clevedon, Hunua, Orere Point, Beachlands, Papakura and Howick battled for about three hours to bring the fire under control, with some crews remaining on site until 10pm to dampen down hotspots.

On Sunday, a number of trees were still smouldering, and crews were keeping an eye on the area.

Clevedon's chief fire officer Mike Kelly says: "Conditions are still extremely dry and the prohibited fire season remains in force. The little rain we have had recently is not enough to change the situation. It also highlights just how quickly fires can spread and become large incidents. The current fire season is well signposted, please ensure you respect it."



Top and above: Two helicopters plus local fire crews were deployed to help fight Saturday's fire at Waitawa Regional Park.

"A Combined Flair For Real Estate"

Karen Hay
M 021 448 191

Amy-Rose O'Meara
M 021 261 1302

Harcourts
Hoover & Co.
Licensed Agent REAA 2008

SPECIAL AGENTS 003

IAN 0272859314
JENNY 02040002564
NICOLETTE 0277029157

BARFOOT THOMPSON

Attention Landlords:
Time to Call
Richel Barlow

P : (09) 536 7011 or (021) 433 052
E : richel.barlow@raywhite.com
W : rwbeachlands.co.nz
A : 81 Second View Avenue, Beachlands

Ray White Beachlands
Lighthouse Real Estate Limited
Licensed (REAA 2008)

Laminata Garden Sheds
Designed as a kit set with assembly instructions for fast, easy installation just using a battery drill.

1800w x 885d x 1955h or
1800w x 1860d x 1955h
Please contact us for a brochure and pricing.

Our timber is sourced from renewable plantations

Morton Timber Co. Ltd
226 North Road, Clevedon 2248
Ph 292 8656 or 021 943 220
Email: office@mortontimber.co.nz

MORTON TIMBER CO. LTD

INSIDE: Covid-19 Special Feature - all you need to know p5

Health & Style Feature p6-7

BUYING THROUGH THEM BUT WANT TO SELL THROUGH US?

YOU CAN!!!

021 400 979

Ray White Beachlands
Lighthouse Real Estate Limited
Licensed (REAA 2008)

EmbroidMe

East Tamaki

Uniforms & Promotional Products

Follow us on Facebook and Instagram for specials, competitions and giveaways

Cnr Smales and Springs Rds, East Tamaki - 09 265 0300

James Gavin Donovan Solicitors

Ph.09 869 4565

For all your legal requirements

- Conveyancing • Commercial • Relationship Property
- Litigation • Traffic Offences • Wills, Estates and Trusts

info@jamesdonovan.co.nz 42 Kouka Rd, Beachlands

DEADLINES: Display advertising - 5pm Friday. Classifieds and News - midday Monday
Ph: 536 5715 Email: info@pctimes.co.nz www.pctimes.nz

GET IN TOUCH**P:** 536 5715**E:** info@pctimes.co.nz**W:** www.pctimes.co.nz**F:** facebook.com/pctimes**A:** PO Box 5, Beachlands 2147
Level 1, 129A Beachlands Road,
Beachlands**EDITOR****Leanne Chamberlin**

021 426 207

leanne@pctimes.co.nz

ADVERTISING**Melody Cutfield**

021 0261 4467

advertising@pctimes.co.nz

CLASSIFIEDS

info@pctimes.co.nz

ACCOUNTS & CIRCULATION**Pam Rutherford**

536 7164

accounts@pctimes.co.nz

UPCOMING FEATURES**27 March** - Beachlands/Maraetai
+ Clevedon/Whitford + School
Holiday + House & Garden**1 May** - Urban East + Mother's
Day

The Pohutukawa Coast Times is distributed weekly to 6200 homes and businesses in: Whitford, Brookby, Beachlands, Maraetai, Clevedon, Alfriston, Kawakawa Bay, Orere Pt, Hunua, Paparimu

Member of the New Zealand
Community Newspapers
Association

**The PC Times 20 years ago:**

17 March 2000: Residents not happy over plans for new walkway through Maraetai bush.

Weekly Tide Chart

		3:23am ▲ 3.0m	11:26am ▼ 1.0m	
20 Fri	☾			🐟🐟🐟
21 Sat	☾	6:19am ▲ 3.0m	12:20am ▼ 1.0m	🐟🐟🐟
22 Sun	☾	12:48am ▼ 1.0m	7:09am ▲ 3.0m	🐟🐟🐟
23 Mon	☾	1:34am ▼ 0.9m	7:55am ▲ 3.1m	🐟🐟🐟
24 Tue	☾	2:16am ▼ 0.9m	8:37am ▲ 3.1m	🐟🐟🐟
25 Wed	☾	2:54am ▼ 0.8m	9:17am ▲ 3.1m	🐟🐟🐟
26 Thu	☾	3:30am ▼ 0.8m	9:55am ▲ 3.1m	🐟🐟🐟

MARINE FORECAST - VHF CHANNEL 19
AUCKLAND FORECAST - 0900 999+ YOUR STD

Guest editorial

by Auckland mayor Phil Goff

Over the past three years, Auckland has made significant progress investing in the infrastructure and services needed to build a truly world-class city and addressing the challenges of transport, housing and the environment.

Record investment in public transport infrastructure has increased patronage on our network from only 60 million trips a year a decade ago, to more than 102 million trips in 2019.

Our water quality and natural environment targeted rates have enabled extra investment of \$763 million over 10 years to clean up our beaches and harbours, tackle the predators and diseases that threaten our native species and protect our environment.

Last year more than 15,000 dwellings were consented in Auckland, the strongest year for dwelling consents since records began and a sign that we are starting to make meaningful progress addressing the region's housing shortfall.

Auckland Council is currently consulting on its Annual Budget for 2020/2021. This budget aims to ensure continuity, stability and certainty so we can continue the progress of the past three

years. We will continue to invest strongly in infrastructure and services, showing leadership on climate change and readying Auckland for the international spotlight in 2021, when we host major events including the 36th America's Cup, the Men's Softball World Championships, the ICC Women's Cricket World Cup and Rugby World Cup 2021 and more.

The budget includes investment of \$2.7 billion in capital assets and provides operating expenditure of \$4.4 billion, enabling us to continue to use improve transport and address traffic congestion, reduce carbon emissions, enhance our environment and provide the services and facilities our growing city needs.

Feedback closes soon—on 22 March—so I encourage you to visit ahaveyoursay.nz to tell us what you think of the council's priorities.

On another topic, Auckland is continuing to experience hot and dry weather conditions. Despite some isolated rainfall, Watercare's storage levels have fallen to 64 per cent—significantly lower than the 80 per cent level that is normal for this time of year.

Careful management by Watercare has meant that we have not yet been required

to impose water restrictions, but it's important to save water wherever you can. Auckland Council is playing its part by turning off almost all its water features and fountains, as well as all splash pads at leisure centres, except those that use recycled water.

We are continuing to carry out essential irrigation of our sports fields, to prevent loss of turf and ensure that they can still be used over winter. Gardens throughout the region are being watered only as required and the bare minimum of water used.

To help ease pressure on rural Aucklanders who rely on rain tanks for their water supply, the council's tanker-to-tanker water delivery initiative has been delivering up to 1 million litres of water a day to rural communities, and community water collection stations have been opened at more than 34 sites across the region—including at 13 locations in south and east Auckland—for people to collect water in containers for household use.

Visit ourauckland.nz for water collection locations and for more information about saving water.

Maraetai motorists enter sticky situation

Motorists were left scraping metal and tarseal from their tyres after travelling along Maraetai Drive last Saturday morning.

Auckland Transport contractors had chip sealed the road on Friday night. Local residents took to Facebook on Saturday with photographs showing tarseal-coated tyres embedded with stones. People also reported damage to windscreens and paintwork caused by flying stones, and loose metal had spread across nearby footpaths.

AT says it cannot accept any liability for any damage caused to people's vehicles, and that the issues were caused by drivers ignoring the temporary 30kmh speed limit.

An AT spokesperson said: "Any drivers who wish to claim for damage to their

vehicle - due to the road resurfacing work - need to refer their claim to their insurance company. Auckland Transport cannot accept any liability for any damage caused to their vehicles, as vehicles are meant to be driving slowly through the road works site."

Temporary traffic management - including a temporary speed limit of 30kmh - was in place following the road works to allow traffic to drive over the surface, which helps to compact the surface.

"The road is safe to use - with the loose chip on it - providing vehicles drive slowly at the temporary speed limit of 30kmh."

AT says the road was swept on Monday morning, and that it would be swept over the following days until the surface settled.

"AT will be monitoring the road surface until it is acceptable."



It took local resident Steve Cox two hours, a screwdriver and a wire brush to remove this pile of metal from his car tyres after driving along Maraetai Drive last Saturday.

SUTCLIFFE MATSON
LAW

LAWYERS SERVING THE POHUTUKAWA COAST

38A Wakelin Road, Beachlands
Wednesday's, Thursday's and at other times by appointment



Photo credit: Tio&Co Photography
BREANNA FULLER AND **BRADEN MATSON**
BCL/LLB (HONS) | ASSOCIATE MA/LLB | DIRECTOR

Conveyancing, Refinancing, Wills,
Powers of Attorney, Business Transactions,
Family Trusts,
and Other General Legal Needs.

We are happy to meet you after hours and
at your home for convenience.

Ph: 09 279 8351 or Braden: 021 327 030
braden@smllaw.net.nz | breaanna@smllaw.net.nz
www.sutcliffematsonlaw.net.nz

PRIMA
COLLISION REPAIRS

Complete panelbeating and car painting

East Tamaki: Unit B 154 Harris Rd, East Tamaki, Auckland 09 274 4778
Manukau: 2/117 Kerrs Rd, Manukau, Auckland 09 268 9340

Letters

Racism is not OK

On Sunday 8 March our family decided to explore Pine Harbour and Beachlands area.

We drove around Pine Harbour, bought some food at the shops near Countdown, and had our lunch near the Beachlands wharf. We then went for a walk around the local streets, to Shelly Bay, and then to the shops at Beachlands village.

In the space of less than 2 hours, 3 times we had to endure the very unpleasant experience of being subjected to very rude and racist swearing and yelling from some of the locals we met or passed by.

These were kids and adults, at their front yard playing on their trampoline, at the shops, and at the park near the wharf.

We couldn't believe what we experienced and it upset our little kids who asked us why those people ridiculed our Asian race.

The whole experience made us feel threatened when we were there, it felt like we were in some redneck village some-

where when we were actually in Auckland just a short drive from where we live in East Auckland.

For your information, my wife and I are NZ citizens who have been in NZ for about 24 years and our kids were born here. Not that those things should matter though, no one deserves such racist treatment.

We have been to Beachlands quite a few times in the past (though never explored the area on foot) and have some acquaintances who live in Beachlands, they are good people and previously we always thought positively about Beachlands. While I'm sure the majority of Beachlands residents are regular good people, obviously there is a minority there with racist tendencies who teach their kids to be the same. Our image of Beachlands has now changed, what a shame.

Name and address withheld

Family Fun Day cancelled

After careful assessment of public opinion, guidance from the Ministry of Health and senior community influencers around the COVID-19 situation, a decision has been reached to cancel this year's community family fun day event.

The constant message we are hearing is that many Aucklanders are taking sensible precautions such as teaching their children and taking heed themselves, to stay away from large gatherings and events. This event draws on a huge amount of time, money and support from countless people and to everyone involved we thank you wholeheartedly. Through this event, the support we give each year to the Middlemore Foundation - Kidz First and The Starship Foundation shows the generosity of our wonderful community. The funds raised for these charity organisations are core to the success of this event but equally important is your health and safety. To continue supporting the benefitting charities, please note that the "silent auctions"

with great items up for bid will go ahead as planned. Details will be on the Barfoot & Thompson Beachlands and Whitford Facebook pages.

We look forward to seeing everyone at our next event.

Lance Pemberton
Branch Manager
Barfoot and Thompson
Beachlands and Whitford

Opinions and letters published in the Pohutukawa Coast Times are not necessarily the views of the editor, or publisher. The Pohutukawa Coast Times reserves the right to edit or omit copy, in accordance with newspaper policies. Letters to the editor must be attributed with a name and address. Names and town of origin will be printed, or may be withheld at the editor's discretion. Letters may be edited for grammar, spelling, clarity and legal reasons.

DIRTY CAR? NO WATER?



OPEN 7 Days, 24 HOURS
Credit Card and Paywave available!
347 Ti Rakau Drive, Botany Downs
Next to Animates Pet Centre, opposite Howick & Eastern Buses

LAND SURVEYORS
Hollier Greig Ltd
LAND SURVEYORS & LAND DEVELOPMENT CONSULTANTS
A member of the D.N. Book Consultants Group

When considering:

- Subdivision of Rural, Residential and Commercial land
- Redefinition of boundaries for building or fencing
- Engineering and topographical surveys

PH: JOHN GREIG 292-8745
McNICOL RD, CLEVEDON

Legal issues? Need to find the right lawyer to help you?



I am Devon McDonald of the law firm **Swayne McDonald**. Our legal team of six lawyers and registered legal executives has more than 140 combined years of legal practice experience.

We can help you in a wide range of legal matters – including conveyancing, relationship property, small businesses, leases, wills, estates and family trusts. Call us for an initial relaxed and confidential chat about your legal needs. We'll have the right lawyer to help you.

Branch office conveniently located at:
Botany Junction, corner Ormiston Road & Te Irirangi Drive. Phone 265 2700.

Swayne McDonald
LAWYERS
Visit us at: www.smlaw.co.nz

BARFOOT THOMPSON & Student Voice
LOCAL STUDENTS' NEWS, VIEWS & LITERARY TALENT


This column features news, views and literary talents of students from Beachlands, Maraetai, Clevedon, Brookby, Hunua, Paparimu, Orere and Ardmere Schools.

One student featured each week will be selected to receive a \$20 book voucher, thanks to Barfoot & Thompson's Beachlands and Whitford branches.

15 year 7 and 8 students from Orere School have just returned from senior camp in Wellington. They had an amazing time!

The Buzzy Beehive
- by Skylah

One of the things I definitely enjoyed was the Beehive. I was very lucky to go there, and it was an experience I could never ever forget. When we entered the Beehive, we had to go through security. I was bursting with excitement. It looked amazing; I have never seen anything like it. Our tour guide, Troy, took us to a room that was a replica of the debating chamber (where people argue). Troy talked to us about all the important people that have jobs in the debating chamber. Like the Prime Minister, the Speaker and the Opposition. I was interested in everything. We even saw camera men that were talking to Jacinda Ardern!



AUTUMN UPGRADES
KEEP YOU ON TOP
STAY ON TOP OF YOUR GARDEN WITH FREE UPGRADES ON SELECTED TOOLS

SHOP ONLINE
www.stihlshop.co.nz

RMA 443 C
PRO CORDLESS LAWNMOWER KIT
FOR MEDIUM SIZED LAWNS

36V / 21kg Without Battery
Mowing Area Up To 500m²
Cutting Width 41cm

NEW

NOW \$995 KIT PRICE
\$755 MOWER ONLY

FREE BATTERY UPGRADE FROM AP 200 TO AP 300 UP TO 15% MORE RUN TIME



Upgrade Kit includes tool, AP 300 Battery and AL 101 Charger

RMA 510
PRO CORDLESS LAWNMOWER KIT
FOR LARGE SIZED LAWNS

36V / 28kg Without Battery
Mowing Area Up To 350m²
Cutting Width 51cm

NOW \$1,255 KIT PRICE
\$795 MOWER ONLY

FREE BATTERY UPGRADE FROM AP 300 TO AP 300 S UP TO 25% MORE RUN TIME



Upgrade Kit includes mower, AP 300 S Battery and AL 300 Charger

FSA 65
PRO CORDLESS LINETRIMMER
For all grass trimming in domestic and light-commercial applications.

36V / 3.2kg Without Battery
Run Time Up To 60 mins*

NOW \$565 KIT PRICE
\$345 TOOL ONLY

FREE BATTERY UPGRADE FROM AP 100 TO AP 200 100% MORE RUN TIME



Upgrade Kit includes tool, AP 200 Battery and AL 101 Charger

HSA 66
PRO CORDLESS HEDGETRIMMER KIT
Powerful and quiet for domestic and light-commercial applications.

36V / 3.1kg Without Battery
Cutting length 500mm
Run Time Up To 144 mins*

NOW \$565 KIT PRICE
\$345 TOOL ONLY

FREE BATTERY UPGRADE FROM AP 100 TO AP 200 100% MORE RUN TIME



Upgrade Kit includes tool, AP 200 Battery and AL 101 Charger

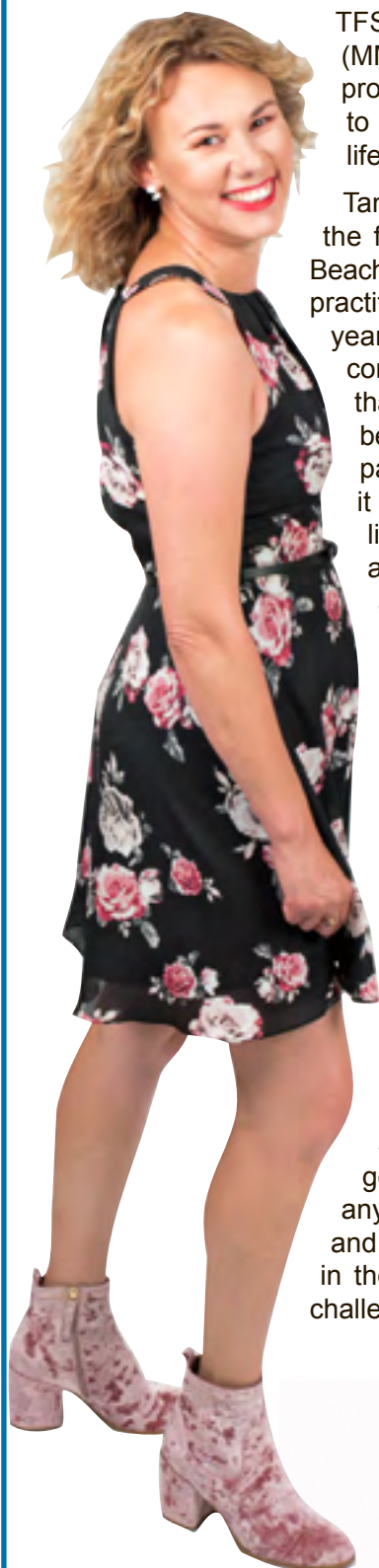
*Run-time with upgraded battery. Offers on selected products and valid from 01 March - 31 May 2020 or while stocks last. Terms and conditions apply. See in-store or online for details.

STIHL SHOP™ BOTANY
16 Bishop Dunn Place, Botany
PH 2713000
www.stihlshopbotany.co.nz
OPEN 7days



STIHL SHOP
LOVE YOUR LAND

Introducing Teaching Financial Success (TFS)



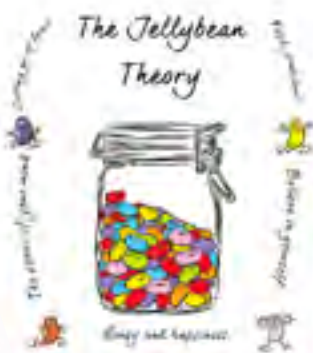
TFS is the umbrella brand for Mind Money Soul (MMS) and The Jellybean Theory (TJT). A suite of products with a holistic approach to teach you how to achieve financial freedom so you can live the life you want.

Tanya Kravcenko is a Chartered Accountant and the founder of TFS. She has been a resident of Beachlands for the past 15 years and has been the sole practitioner of beanies2u for the past 8 years. After 35 years of working in the business arena in both the corporate and chartered world, Tanya has learnt that getting ahead financially is a discipline. She believes that life is not all about making money and paying off your mortgage. For business owners it is about growing your business so that you can live a life that you love. She has also learnt that as a business owner you need a lot of business and personal tools to do this.

Her new package MMS has been created in order to teach business owners how you can achieve financial freedom in 10 years whilst living the life you love.

MMS is run by a team of experienced professionals who provide an integrated and holistic approach to getting the life you want. Our team comprises Tanya Kravcenko - Chartered Accountant and Financial Strategist, a Financial Advisor, a Lawyer, a Mind Coach and a Business Coach. We are all qualified and have years of experience in our professions so you can be confident you are in good hands.

The MMS package will provide regular support and coaching to ensure you achieve your financial goals. MMS knows that the most important thing any person in business needs is a Business Plan and to review it regularly. A Mind Coach is included in the package to assist you with the unexpected challenges that pop up.



Keen to know more?

Join us for a no obligation information evening and find out more about MMS at the Teaching Financial Success offices at 38a Wakelin Road, Beachlands on Wednesday April 1 from 7.00pm.

RSVP: tanya@mindmoneysoul.co.nz or call 027 5533 570 for more information.

TFS | **TEACHING FINANCIAL SUCCESS**
www.teachingfinancialsuccess.com

Please support the businesses who support your local paper!

Pedestrian struck by vehicle

A male in his 20s was struck by a vehicle on Maraetai Drive last Thursday 12 March at about 8.30pm.

The accident took place between the bridge near the Te Puru sports fields and Keanes Road.

First Responders provided immediate assistance until the patient's condition was stable enough for transfer to the Auckland Westpac Rescue Helicopter, which was waiting at the Maraetai Beach helipad.

The man was in a critical condition at the time of being taken to hospital, though his condition is understood to have improved over the weekend.

over the weekend.

The scene remained closed for 3-4 hours while the Serious Crash Unit undertook a site investigation.

Traffic was diverted through Clevedon during the road closure.

Beachlands chief fire officer Shane Rutherford says motorists were very understanding. "The reaction from drivers was really good - except for one person who wasn't happy about having to turn back through Clevedon."

At this stage the incident is still under investigation.

Formosa court case deferred

The court case between Auckland Council and Formosa Golf Resort has been deferred until late April 2020.

17 charges were originally filed with the Manukau District Court where the case was scheduled for late January, but the matter was then referred to the Environment Court. It was due to be heard on 27 February, but has now been adjourned until 30 April.

Three defendants from Formosa Golf Resort will appear relating to discharges of wastewater at the Formosa Golf Club. Concerns about Formosa's wastewater discharge processes were first noted by Auckland Council as early as 2010. In 2013, a council audit found the site's wastewater systems to be overall non-compliant.

Formosa was issued with abatement notices early last year relating to sewage

discharge, which it failed to comply with. Video footage was aired on TVNZ last June, alleging that thousands of litres of raw sewage was being discharged from tanks into an on-site gully.

Shortly after, Auckland Council issued an Insanitary Building Notice in relation to the club house, sports complex, laundry and all of the villas, prohibiting the discharge of any waste and giving the property owners 30 days to remedy the problems.

Information supplied to the *PC Times* indicates repairs to Formosa Golf Club's sewage treatment plant are only now nearing completion.

Last week the *PC Times* reported that the land owned by Formosa Golf Course had been purchased by a joint entity formed between the NZ Super Fund and parties associated with the Russell Property Group.

Coast CAB & Sutcliffe Matson to offer free legal advice

Coast Citizens Advice Bureau is now able to offer a free legal clinic consultation with Beachlands law firm Sutcliffe Matson on general legal matters.

The clinic will be held on Thursday mornings from 10.30-11.30am. Consultations are by appointment only - please phone Citizens Advice Bureau Pakuranga on Phone 576 8331 or email enquiries to pakuranga@cab.org.nz.

Citizens Advice Bureau is also offering free advice by experienced, trained volunteers on a range of matters from healthcare, education, immigration, ten-

ancy, consumer rights, income support, trees, fencing, food parcels and issues with neighbours.

Specialist clinics are also available to the community for matters such as immigration, counselling, gambling, age concern, migrant connect and monthly workshops for new settlers to New Zealand.

Anyone is welcome to visit (no appointment necessary) the new Coast Citizens Advice Bureau which is open each Friday afternoon from 1-3pm. See the *PC Times* community calendar for details.



We are here to help and support

Our approach, philosophy and high standards are ideals we are proud to uphold. Our compassion, values and dedication when caring for the bereaved are just a few of the qualities that form the heart of Resthaven Funerals.

HOWICK. Cnr Picton & Walter MacDonald Sts | Ph. 533 7493
 MANUREWA. 88 Great South Rd | Ph. 267 2530

www.resthavenfunerals.co.nz



Local organisations work to reduce spread of Covid-19 virus

All you need to know about Covid-19

- by Dr Michael Clarke, Beachlands Medical Centre

There is a current worldwide pandemic caused by a new Corona Virus causing an illness called Covid-19.

There is also a lot of confusion and concern about risk of infection and personally what to do to avoid infection or if you are sick.

Several things to help clarify these risks:

- This is a mild illness in most people with full recovery, those at more risk are the elderly and people with prior illnesses.
- It is passed on in droplets from coughing and breathing, from 48-hours before symptoms, with incubation of 1-14 days (commonly 3-7 days).
- It is killed by soap, alcohol hand cleaners, temperatures over 27 degrees and can only survive 6-12 hours on any surface.
- New Zealand's strategy is "Keep it out-Stamp it out-Slow it down". In other words to not stop it, but to slow spread of it to allow our health services to cope and protect those at greater risk of all getting sick at one time.
- The case definition changed this week, and a "suspect case" is now anyone with overseas travel in the last 14 days, or close or casual contact with a confirmed case in last 14 days AND has fever 38 degrees OR either cough, sore throat or shortness of breath.
- All of these "suspect cases" need to be seen and tested for Covid-19 at General Practice with staff wearing full personal protective equipment, in an isolated room, with no contact with other patients.
- This now includes all people coming from a Northern Hemisphere winter in the past 2 weeks who have a cough or sore throat.
- Anyone with respiratory symptoms and travel recently, or contact with a known case MUST ring first and get advice from their General Practice team or Healthline. DO NOT just turn up!
- Your General Practice team and Healthline (tel: 0800 358 5453) is fully informed on how to manage and advise you with daily updates from the Ministry of Health.
- All those returning from overseas, or being a contact of a confirmed case, must SELF ISOLATE for 14 days. This means avoiding situations where you could infect someone else. It means staying at home, and at least 2 meters from others, but you are able to go outside, walk, run, or bike - but not within 2m of others or at public gatherings.
- The Ministry of Health website (health.govt.nz) is New Zealand's "single source of truth" so check there for all updates.



Rural volunteers offer assistance to vulnerable residents

Clevedon resident Melanie Moylan is organising a pool of volunteers to help anyone requiring assistance in Hunua, Orere Point, Kawakawa Bay and Clevedon. Volunteers are happy to help people who are older, vulnerable health-wise, in self-isolation or not confident about going out, with tasks such as delivering food or organising medication/doctors visits.

"Please, if you have family in the area, check on them and help them out," says Melanie.

If you need help, details are available at most local shops, pharmacies, medical centres, garages and cafes. The PC Times also has a list of contacts.

EASTERN MARINE
ENGINEERING SERVICES

- ▶ ENGINES
- ▶ PARTS & ACCESSORIES
- ▶ PROPELLERS
- ▶ SERVICE & REPAIR

MERCURY

4 REASONS TO CHOOSE MERCURY

- BEST IN CLASS PERFORMANCE
- SAVES \$7750
- FASTEST WEIGHT & COMPACT
- 3 YEAR WARRANTY

Unit 4/A, 190 Jack Lachlan Drive
Beachlands, Pine Harbour Marina
09 536 6252 • easternmarine.co.nz
info@easternmarine.co.nz

Community events/gatherings cancelled or postponed

Over the next few weeks the Pohutukawa Coast and surrounding rural areas are likely to see community, sports and entertainment events postponed or cancelled, as organisations work with the government to inhibit the spread of Covid-19.

Within the past week, the following local events have been postponed or cancelled:

Barfoot & Thompson Family Fun Day at Te Puru; Maraetai Beach School Twilight Fun Night; Brookby School quiz night; Hunua Village Market Day; Beachlands Belles' netball trip to Hawaii.

Organisers of Coastguard Maraetai's charity golf day in April say that at this stage their event will still go ahead.

Beachlands Baptist Church pastor Neil Hamilton says that the church has made changes to its services as a result of the recent advice from the Ministry of Health and other health professionals. "Even though the congregation of Beachlands Baptist is usually less than 500 on a Sunday, it is still a mass gathering in a confined space and therefore the church has decided to take precautions and adjust all of its services from Monday 23 March," says Neil.

"At Beachlands Baptist Church, we love Jesus and our community. We'd like to take all practical steps we can to protect our community here on the coast, particularly those at most risk from Covid-19 and other seasonal bugs and viruses. For

three weeks, from Monday the 23rd of March we will be adjusting the format of our Sunday morning services. We will still provide a Sunday morning worship experience, but in a different format to our conventional services.

"We will continue to monitor the spread of Covid-19 in Auckland during this period and review the commencement of our regular Sunday meetings according to advice from medical professionals. This will also effect the provision of mid-week activities such as Mainly Music, Toy Library, Coffee and Kids, as well as our Friday night youth work. The Toy Library will still be available by appointment. All Easter services and youth camps over that period have also been cancelled as a preventative measure.

"We are not responding to Covid-19 out of fear however we want to proactively and genuinely care for and protect those in our community," says Neil.

The Beachlands Baptist Church says it is currently setting up ways to ensure its members can remain connected through online platforms and other means.

"We, as a church community, are still available to offer practical help or support where needed. If you, or someone you know, has any practical or pastoral need, we'd love to hear from you. You are welcome to contact us on 022 463 8569."

Protect yourself and others against COVID-19

Cover your coughs or sneezes with tissues or your elbow

Put your used tissue in the rubbish bin or in a plastic bag

Wash and dry your hands often, especially after coughing or sneezing – use soap or hand sanitiser

Stay away from others if you're unwell

COVID-19 HEALTH ADVICE
0800 358 5453

For international SIMs call +64 9 358 5453

health.govt.nz/COVID-19

Protect your family/whānau from COVID-19 (coronavirus)

New Zealand Government

February 2020 | HP7328

Health & Lifestyle

Taking good care of ourselves Autumn trends for 2020 –

- Jack Holmes, Perform Fitness

This month I will be focusing on keeping our body and immune system strong. Without doubt the recent global virus becoming a pandemic is concerning for us all, and as a result we need to revisit our own health, our families, communities and indeed our planets.

You see life is known as fractal geometry - small patterns and cycles are mirrored into bigger patterns and cycles. This means that what we perceive at a small level is indeed happening on a larger scale.

In previous articles I explained that our body is a cooperation of around fifty trillion cells working in harmony to create your life. The resilience of our community of cells is proportional to our environment and how we feel about it. Likewise, it is the same for our family, community, town, country and planet – we need to

be conscious of our environment and make positive choices moving forwards.

First and foremost, we need to take care of number one, ourselves then we are in a great position to take care of the person next to us and those who need our help.

So, focusing on number one, there are practical steps we can take:

1. Clean your body, especially your hands and make sure they are dry. In the case of a virus it does not fare well in dry conditions, but can last days in wet conditions.

2. Reduce the risk of catching something by being aware of your environment – avoid toxic locations, observe unhealthy people or environments and adjust plans in the future to decrease the risk of both.

3. Stay positive – a strong immune system is in partnership with a strong and positive mindset.

4. Boost your chances of vitality by keeping your body exercising and eating natural, unprocessed foods and fluids.

5. Cooperation – there's something we can all be doing for someone else to help keep them safe.

Find your unique offering to the community around you and as an extended family we will be stronger. Have a happy and vibrant March, Pohutukawa Coast.



M. 021 245 7626
E. kelliewalkerstylist@gmail.com
[facebook.com/kelliewalker.personalstylist](https://www.facebook.com/kelliewalker.personalstylist)

Well ladies, unfortunately this will be my last article for now and a sign off to Beachlands as we make a big move to the mighty Waikato next month. It may not be forever, but for now it's farewell and I want to thank the fabulous team at the *Pohutukawa Coast Times* for providing me with the opportunity to enter your worlds with my fashion and styling pieces.

I thank all of you who have read my column and especially those who have let me know you enjoyed my articles or gained inspiration from my pieces, and particularly to my beautiful styling clients. I wish you all the best in your wardrobe endeavours. If you ever need me I'm still contactable as I take my little business to a new town and am happy to make trips to Auckland if you ever

need me.

Now onto the important stuff....it's time to start layering up ladies! Did anyone notice a slight change in temperature/ weather this week? I certainly did! But to be perfectly honest, it's about time. It is a welcome relief from the extreme non-stop heat we've had this summer.

As we head into autumn, I want to bring you six of my favourite trends for the season to give you some inspiration for your upcoming wardrobe. Whether it be in an op shop, a charity shop, a retail store or online, you can always add an on-trend piece or bring one out from the back of the wardrobe as it comes back into play for the season.

1 - Beautiful autumnal shades of green, tan, brown and neutrals of white, cream and black will all be in vogue for the season along with a fun punch of fuschia/pink and my absolute favourite kowhai yellow to add that unexpected pop of colour

2 - Texture and statements to add interest and warmth to your wardrobe this season will come in the form of velvet, faux fur, sustainable feathers and leather

3 - Print for autumn in any form is a great way to add interest to an outfit and have you turning heads this season

4 - I'm just loving tailoring this season

EAST AUCKLAND OSTEOPATHY P: 09 533 0010

Heather Nicholls
 • Registered Osteopath
 • ACC Provider

NOW LOCATED AT
 The Greenhill Clinic, 253 Pakuranga Rd
www.east-auckland-osteo.co.nz



PERFORM FITNESS

FAMILY GYM Membership

ONLY \$40 PER-WEEK*
 *Terms & Conditions Apply.

7 DAYS FREE TRIAL*

Get the **WHOLE FAMILY FIGHTING FIT** for this winter Ph **536 7231**

110 Jack Lachlan Drive • BEACHLANDS • info@performfitness.co.nz



smile dental giving you one more reason to smile

smile dental Beachlands NOW OPEN

NEW PATIENTS WELCOME QUALITY AFFORDABLE FAMILY DENTISTRY

Smile Dental is New Zealand largest dentist owned dental group with 17 modern innovative clinics in Auckland and Palmerston North.

[Free Exam*] [Free ACC & Social welfare Quotation]
 [Free adolescent dental care] [White fillings]
 [Crowns] [Veneers] [Dental Implants] [Invisalign]
 [Wisdom tooth Surgery] [Botox & Dermal Filler]

Address:
 129 Beachlands Rd,
 Beachlands,
 Auckland

Come for a FREE EXAM*
Get Our FREE TRAVELLING TOOTHBRUSH

www.smiledental.co.nz 09 302 0808 *excl. X-Rays

[Albany] [CBD] [Henderson] [Avondale] [Te Atatu] [Ranui] [Rimutara] [Onehunga] [Sylvia Park] [Mangere]
 [East Tamaki] [Somerville] [Beachlands] [Maukara (Takapuna)] [Paukura] [Palmerston North]

Health & Lifestyle

my farewell article to you all

and the blazer and pants look is definitely having a moment, love that they are separates or can be worn together. These pieces are versatile and classic. To get more wear out of your wardrobe dress the pants with blouse/top, or the blazer with jeans. Maximise your wardrobe with these key pieces now, invest and you will have them for a long time.

- 5 - Any asymmetrical neckline will have you on the hot list this season. Whether its long sleeve, no sleeve, top or dress, it's going to be on trend.
- 6 - Bienvenue – the return of the beret, a stylish statement and practical piece for your wardrobe, enjoy a bit of fun this season and try one.



Storm sustainable feather jacket



Repertoire dress



World blazer and pant

Private Pilates studio opens

A dedicated Pilates studio opens in Beachlands this month. My Pilates Studio brings personal, professional instruction to those who want to make their sessions count. Founder Krystel Jeffery says private Pilates instruction is perfect for people looking to return to exercise after injury, surgery or who simply haven't exercised for a long time. My Pilates Studio offers private and two-on-one sessions. Having no more than two clients in the studio ensures that sessions are focused on your specific needs. Using the full range of Pilates studio equipment including Trapeze Table, Reformer, Wunda Chair and Ladder Barrel, makes the studio perfect for a safe return to movement and health. A Pilates instructor with more than a decade of experience, Krystel holds a diploma in Pilates instruction from Polestar International, the worldwide leader in rehabilitation-based Pilates education. Krystel found Pilates at the age of 19 after suffering a serious back injury. "Pilates helped me avoid back surgery in my late teens through increased strength and mobility. It gave me the confidence in my body to do things I didn't feel I would ever be able to do



given my back condition - I have surfed, snowboarded, gone on cycling adventures and it keeps me running! Pilates gives me the tools to avoid injury and recover quickly if something unfortunate happens."

My Pilates Studio client Petita Traeger, 60, had a similar experience with injury and is pleased that she can now keep up with her grandkids. She credits her Pilates sessions with Krystel for "giving me my life back."

Client Vicky Manning found the personal instruction from Krystel made all the difference for her. "You are the kindest, most caring instructor I have come across in my 54 years," she says.

Limited sessions available, visit mypilatesstudio.co.nz or phone Krystel on 021 646 729 to secure your place.

Protect yourself and your family, come into East Care to get your flu vaccinations.

These will be available from Saturday 21st March. Please phone 09 277 1516 for an appointment to avoid waiting in a queue.

When you visit East Care you will be asked for a declaration about previous travel or close contact with someone diagnosed with the Novel Coronavirus as you enter our premises to ensure the on-going safety for everyone. This is one of the additional infection control processes in place to assist in the protection of our staff, patients and community.

OPEN 24 HOURS - 7 days a week
Emergencies will take priority

EAST CARE
ACCIDENT | MEDICAL | SPECIALISTS
BOTANY ROAD

260 Botany Road, Howick
Phone 09 277 1516 www.eastcare.co.nz

Make it count. Don't get lost in a crowd.

Private Pilates Instruction in Beachlands

Visit mypilatesstudio.co.nz
or phone Krystel on 021 646 729 to book your session.

Sunkist Bay toilet block completed - but unable to open

The new \$689,000 toilet block at Sunkist Bay remains unused more than two months after it was completed.

“It was supposed to be open at Christmas in time for summer and I am absolutely astonished it still isn’t,” says Franklin Local Board member Malcolm Bell.

In the meantime the old toilet block was demolished.

“If we had been asked, we would have suggested it was left standing until the new block was completed and operational,” says Malcolm.

Temporary portaloos have been set up in the Sunkist Bay carpark to cater for beachgoers while the new toilet block stands

unused, ringed by construction fencing.

Questions put to council by the *Pohutukawa Coast Times* elicited the following response:

- The main issue the project team is working through is the power connection. The plan was to reuse the existing connection but it was discovered to be in poor condition, making a new one necessary.
- The area is a complex coastal site below a very steep hill, and has many native trees and also a known midden. The complexities of the location mean it’s essential to ensure the new connection points are correctly positioned, which has meant multiple phone calls, emails and site meetings with the providers. A location has been agreed, with the provider about to confirm when it will be able to undertake the work.
- With that work to be done, there is currently



The new retro bach themed public toilet block at Sunkist Bay in Beachlands, that was supposed to have been operational for this summer.

rently no date for the opening but council is making all efforts to ensure the new toilets open as soon as possible.

The new toilet block has been wrapped with murals to look like a retro bach, to reflect the original bach community of Beachlands.

The idea to decorate the toilet block came from fellow local board member Angela Fulljames.

“Why put up a stock standard block when you could create something unique and tell a story,” she explains. “At one end of the toilet block it looks as if you are looking into a bach lounge and on the wall in that lounge are old black and white photos of the community.”

Native birds are also incorporated into the exterior murals.

Angela says the wrap couldn’t have been done without the help of the Manukau Beautification Charitable Trust that came up with the artwork, created by Trust graphic designer Dawn Edwards.

Angela says she is keen to see something similar happening in Beachlands Village.

“If people and businesses picked up on the retro theme then maybe we could bring that theme up onto the main street and create something quite special reflecting that simpler bygone era and coastal village feel when people spent more time with their families and in their village.”

PROBIZ SYSTEMS LIMITED

- Accountant
- Tax Returns
- Business Advice
- Tax Planning
- Affordable individual service

sharon@probizsystems.co.nz

Sharon Bramley
WHITFORD BASED
Ph: 09 530 8036

Our Lady Star of the Sea

CATHOLIC MASS
SATURDAY • 5:00PM
FUNCTION ROOM, TE PURU
COMMUNITY CENTRE,
954 WHITFORD-MARAETAI ROAD
WWW.BEACHLANDSCC.COM OR
PH: 09 536 6753
CHILDREN’S LITURGY AND
SACRAMENTAL PROGRAMME
ALL WELCOME

Beachlands School - Te Kura o Kahawairahi

Students are fit, active and on the move in 2020

With the support of coaches from Counties Manukau Sport, all classrooms participate in fundamental skills sessions that develop locomotor skills, such as running, jumping, hopping and ball skills such as catching, throwing, kicking, underarm roll and striking. These skills can then be applied to various games and sports that the students are involved in during the year.

On 21 February, 350 Years 4 to 8 students travelled to Lloyd Elmore Pools for our swimming sports. This event saw a mixture of competitive and non-competitive races, relays and free swim-time throughout the day. Congratulations to Takitimu House for winning the swimming house trophy.

Cricket is also in the spotlight with our Years 5 and 6 cricket team participating in the HPPA Cricket competition and a selection of girls in Years 3 and 4 and Years 5 and 6 competing in Quikhit cricket run by Auckland Cricket Association. Back at school, coaches from Counties Cricket are providing all classrooms with skills lessons that enable them to enjoy the game of cricket.

Our Years 7 and 8 students participate in the South Eastern Zone (SEZ) Interschool competitions which is part of AAIMS (Auckland Association of Intermediate and Middle Schools). Two teams are currently preparing for the East Auckland Rip Rugby and the interschool swimming competition.

Finally, congratulations to the following students who were placed in the top three for our competitive swimming races.

	First	Second	Third
Year 4 boys			
Freestyle	Levi Strachan	Jack Saville	Flynn Rowson
Backstroke	Levi Strachan	Flynn Rowson	Carlos Chesnutt
Breaststroke	Flynn Rowson	Elliot Sheppard	Charlie Rossiter
Year 4 Girls			
Freestyle	Elyse McLeigh	Emily Drake	Quinn Green
Backstroke	Kyah Walmsley	Emily Drake	Mia Soares
Breaststroke	Evie Pinch	Autumn Anderson	Zara Dilworth
Year 5 boys			
Freestyle	Juan Terblanche	Carter van der Mescht	Carter Overend
Backstroke	Mitchell Dennis	Juan Terblanche	Carter Overend
Breaststroke	Juan Terblanche	Drehan Korb	Carter Overend
Year 5 Girls			
Freestyle	Samantha Bastin	Meila Sachs	Indy Mealings
Backstroke	Samantha Bastin	Olga Leighs	Pippa Schultz
Breaststroke	Isla Tutt, Samantha Bastin, Pippa Schultz	FIRST EQUAL	
Year 6 boys			
Freestyle	Samuel Fowke	Tyler Caesar	Rios Rewha
Backstroke	Samuel Fowke	Tyler Caesar	Tom Mengal
Breaststroke	Samuel Fowke	Tom Mengal	Kanon Taituha
Year 6 Girls			
Freestyle	Acacia Brown	Georgie Hamilton	Lola Hamilton
Backstroke	Georgie Hamilton	Lola Hamilton	Acacia Brown
Breaststroke	Acacia Brown	Georgie Hamilton	Aliya Symister
Year 7 boys			
Freestyle	Jacob Bingham	Ari Parks	Zarnder Robson
Backstroke	Jacob Bingham	Zarnder Robson	Ethan Munro
Breaststroke	Jacob Bingham	Ethan Munro	No result
Year 7 Girls			
Freestyle	Ruby Holloway	Ane Korb	Briar Ross
Backstroke	Nikita Peddie	Briar Ross	No result
Breaststroke	Ane Korb	Briar Ross	Emily Smith
Year 8 boys			
Freestyle	Deaglan McCarthy	Dylan Terblanche	Nixon Dilworth
Backstroke	Deaglan McCarthy	Dylan Terblanche	Lou Mengal
Breaststroke	Deaglan McCarthy	Dylan Terblanche	Lou Mengal
Year 8 Girls			
Freestyle	Eden Brown	Ella Coleman	Addison Caesar
Backstroke	Eden Brown	Caitlyn May	Nadine Boshoff
Breaststroke	Eden Brown	Addison Caesar	Ella Coleman

Everyday Learning and Growing Together – Me Matau Ra

Leap Frog Challenge raises \$40k for first response equipment

The recent inaugural Leap Frog Challenge has raised \$40,000 for Kawakawa Bay’s First Responders, enough for the emergency response team to purchase a new diagnostic machine.

Twelve teams of 6 people spent their day at the McCallum Residence on Clevedon Kawakawa Road, competing in a variety of challenges from clay bird shooting, golf, dance, volleyball, hobby horse equestrian and various medical challenges to align with the purpose of the event.

As dusk fell, the prizes were awarded to each category, with the Todd Wheeler Transport team taking out the trophy and coveted top prize of a night for 12 people at the luxurious McCallum Residence with a mid-winter Xmas dinner and gentry breakfast.

First Responder Sandra Wood says the

new diagnostic machine will be compatible with St John ambulance equipment and will enable early readings and records for ambulance medics to see what was happening before their arrival. “This is very important information for all medical staff looking after the patient. It will benefit people in the community as the earlier the medics have the information the quicker they know what they are treating,” says Sandra.

“I would also like to thank everybody who was involved in the leap frog challenge. Special thanks to Jan McCallum and Vicki Joyce for the work they did before and during the day, it was amazing.”

If anyone would like to make a donation, the Give a Little page is still open: Kawakawa Bay Orere Health Clinic Inc (First Responders).



Kawakawa Bay/Orere Health Clinic’s first responders and event organiser Megan Laing practice their first aid on Leap Frog Challenge mascot, Deano.
Left: Competitors prepare for the hobby horse dressage challenge.





For Sale



Urban Lifestyle

If you are looking to build a brand-new home with lifestyle charm in an exclusive village community within the Eastern suburb not too far from local amenities, look no further. Whitford Manor Estate brings you the luxury setup of a brand-new residential subdivision with rural outlook. Future plan includes on-site lake, boat house, indoor Swimming pool, Sauna & Spa, gymnasium complex and tennis court, all for the exclusive use of village residents.

Site Office Open 11:30am~3:30pm Sat & Sun

- Prices start from \$400,000 Plus GST
- Builders Term available
- Terrace & Apartment blocks available
- Titles already Issued. Houses are erecting.
- Right next to Whitford Park Golf Club
- Approx. 10 min drive to Botany Shopping
- Approx. 8 min drive to Ormiston Town Centre

Living with a little privacy. This is the one you've been waiting for!



Maria Stephens
+64 21 733 309
maria.stephens@raywhite.com



Liang Dai
+64 22 109 0850
liang.dai@raywhite.com



Stephen Wang
+64 21 581 205
stephen.wang@raywhite.com

Erosion work scheduled for 2021

Council has set aside “a considerable amount of money” for erosion prevention work at Kawakawa Bay, according to Franklin Local Board member Malcolm Bell.

“It’s all about trying to protect both the bays because there was a lot of damage in the last violent storm we had in 2018,” says Malcolm. “There’s no doubt that there will be a lot more damage with another severe storm, and that is true right

along our coastline both on the east and west coasts.”

Prevention work at Kawakawa Bay will include a continuation of the cobblestones previously laid in the first bay.

‘You can actually see that these have worked well because where the cobblestones are there is a lot more land than where it has eroded away between the stretches of cobblestones.’

Work is due to start next year.

Upgrade planned for Te Puru skate park

Council funds have been set aside for upgrading the skate park at Te Puru Park in the 2021-2022 year.

Franklin Local Board member Malcolm Bell says the skate park is also likely to be relocated to the eastern side of the park.

“We have had feedback from youngsters who use the park and from the Police that they would like the skate park to be more accessible, have better visibility and be

a little bit closer to the road for policing purposes,” says Malcolm.

The original skate board ramp was sited at various locations including at Maraetai Beach and on the Sunkist Bay Reserve in Beachlands.

It was moved to Te Puru Park and upgraded to a permanent fixture skate park because of noise complaints from neighbours at its previous locations.

Beachlands hall security goes digital

Users of the Beachlands Memorial Hall now have to obtain a digitalised code to access the premises.

When the Beachlands Community Trust ceased in December, administration of the hall was handed back to council.

Locks were recently replaced and a new

digital keypad locking system installed.

The code is changed regularly.

The community halls in Maraetai, Kawakwa Bay and Orere Point are still administered by local community committees.

Please support the businesses who support your local paper!

42 Wakelin Road 2018
Ph: 09 536 4990
www.barfoot.co.nz

BARFOOT THOMPSON &
LICENSED REAA 2008



BEACHLANDS 1 DEFENDER CRESCENT

4 2 2 2 ONLINE

YOUR HAPPY PLACE

If you appreciate a quality build and being close to coastal walkways and Te Puru then this lovely home may just be a bit of you.

- 7 year old home approximately 238m²
- 4 bedrooms and 2 bathrooms
- Open plan living room + separate lounge
- Stylish modern kitchen & walk in pantry
- Heat pump and ventilation system
- 794m² landscaped section
- Carpeted double internal garaging
- Low maintenance brick and tile home
- Master with ensuite and walk in wardrobe
- Sunny north facing entertaining area

AUCTION
10am Tuesday 31st March @ 62 Highbrook Drive, East Tamaki (unless sold prior)

VIEWING
Saturday and Sunday 1:00 - 1:30pm
www.barfoot.co.nz/789250



Ian Boswell
027 285 9314
i.boswell@barfoot.co.nz
www.IanBoswell.co.nz 09 536 4990



Jenny Chandler
0204 000 2564
j.chandler@barfoot.co.nz
Beachlands 09 536 4990



RayWhite

17 Kibblewhite Avenue, Beachlands

4 2 2 2

Next level comfort, next level style, next level lifestyle. Is this your next move? This 4 year old one owner property has been lovingly maintained, landscaped, developed and highly spec'd since they took ownership from Fletcher Building in 2016.

Entertain in complete privacy, enjoy the quiet sunny spots inside and outside the home and stroll to the newly developed and highly impressive playground on Kahawairahi Drive - just a minute away from your front door. This is simply a stunning home.

For Sale
\$1,339,000

View
Saturday and Sunday 11:15-11:45am

Brianne Bignell 021 400 979
Elise Obern 021 182 5939

rwbeachlands.co.nz
Lighthouse Real Estate Ltd Licensed (REAA 2008)

42 Wakelin Road 2018
Ph: 09 536 4990
www.barfoot.co.nz

**BARFOOT
THOMPSON**
Licensed REAA 2008



MARAETAI 73 MARAETAI SCHOOL ROAD



SEA THE VIEWS!

With an enviable position on the sunny northern slopes of Maraetai, is this family sized, 4 bedroom home. Packed full of character and enjoying magnificent panoramic views from its 1100+ m² section, this property is sure to impress! The main living area offers fantastic indoor-outdoor flow from the modern kitchen through open dining and lounge to an expansive elevated deck. The perfect place to unwind after a long hard day, and watch the sun go down over the city and islands in the distance.

AUCTION

10:00am 24 Mar 2020 at 62 Highbrook Drive, East Tamaki (unless sold prior)

VIEWING

Sat & Sun 12:00-12:30

www.barfoot.co.nz/787191



Mike Deverell

021 466 300
m.deverell@barfoot.co.nz
Beachlands 09 536 4990

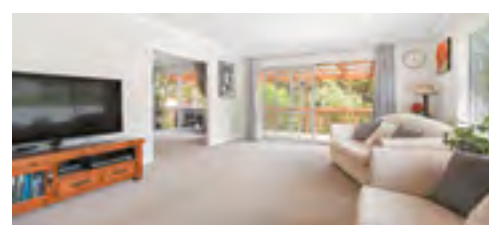


Matthew Brown

027 549 4673/09 536 6569
m.brown@barfoot.co.nz
Beachlands 09 536 4990

42 Wakelin Road 2018
Ph: 09 536 4990
www.barfoot.co.nz

**BARFOOT
THOMPSON**
Licensed REAA 2008



MARAETAI 47 PINEBROOK LANE



FAMILY LIFESTYLE

Looking for a modern 4 bedroom family home that won't break the bank? Look no further! This very comfortable 190m² weatherboard home is only 8yrs old, features a landscaped 1600m² section that would be just perfect for kids and adults alike to explore, with its stream and bush pathways. Easy walking distance to Whitford forest and the fantastic Maraetai Beach with its iconic wharf, cafes and restaurants. The living is spacious, with both open plan family dining, plus a separate lounge, that both flow out to the large covered deck, perfect for enjoying outdoor entertaining.

AUCTION

10:00am 7 Apr 2020 at 62 Highbrook Drive, East Tamaki (unless sold prior)

VIEWING

Open Sat & Sun: 1:00 - 1:30pm

www.barfoot.co.nz/788243



Mike Deverell

021 466 300
m.deverell@barfoot.co.nz
Beachlands 09 536 4990



Matthew Brown

027 549 4673/09 536 6569
m.brown@barfoot.co.nz
Beachlands 09 536 4990

42 Wakelin Road, Beachlands
Phone 536 4990
www.barfoot.co.nz

**BARFOOT
THOMPSON**
Licensed REAA 2008



MARAETAI VIEWS

MAKE YOUR NEW BUILD DREAMS A REALITY

Set on the serene back slopes of Maraetai, with stunning elevated views over the surrounding countryside - we are delighted to announce the latest release of coveted coastal sections.

- Freehold sections priced from \$470,000 with lot sizes ranging between 600m² and 3,474m²
 - Titles are due early to mid 2020
 - Choose your home design, fixtures and materials

Sales Office located at 110 Maraetai School Rd, Maraetai | Open Sat/Sun 11am - 1pm or phone for a private appointment

Call now to secure the future site of your dream home at a price that is attainable.



Matthew Brown
027 549 4673
m.brown@barfoot.co.nz

Mike Deverell
021 466 300
m.deverell@barfoot.co.nz

**BARFOOT
THOMPSON**
Licensed REAA 2008
PROJECTS

COASTAL MARKETING PACKAGE

March Bonus Garden Spruce Up!

(Call us for details)

YOU PAY \$0
T's & C's apply

Harcourts Hoverd & Co.
P 09 536 6121
A 1/42 Wakelin Road, Beachlands, Auckland 2018
E beachlands@harcourts.co.nz

Harcourts Hoverd & Co.
PROPERTY MANAGEMENT

Owning an Investment property Shouldn't be scary!

Call Dasha Mann on 027 700 6900 for a non-scary chat.

Foodie Guide

THE FRANKLIN
TAPHOUSE & KITCHEN

Monday - Friday 12pm-late
Saturday & Sunday 10am - late
Brunch 10am-12pm on the weekends

Ph: 536 5978
Pohutukawa Coast Shopping Centre
www.thefranklinpub.co.nz

Red Shed Palazzo
www.redshedpalazzo.co.nz

WEDDINGS, BIRTHDAYS
OR ANY SPECIAL OCCASSIONS
Breakfast/Lunch - licensed
OPEN 7 DAYS 8.30AM-4.00PM
16 Jesmond Rd, Karaka
Ph: (09) 294 6687
E: eat@redshedpalazzo.co.nz

MELT
BURGER & PIZZA

OPEN HOURS:
Mon/Tue 4.30-9.30pm
Wed-Sun 11.30am-9.30pm
1/44 Kauka Rd, Beachlands
(opposite Countdown)

Ph: 217 4917

Blue Elephant
Innovative Authentic Thai Restaurant
@ The Clevedon Hotel, 26 Clevedon Kawakawa Road, Clevedon Ph: (09) 215 8651

Tues - Sunday from 5.30pm
Takeaways available for pick up
blueelephant.co.nz

Foreshore
Facebook @foreshore

Open 7 DAYS:
11.30am-2.30pm & 5pm-10pm
251 Maraetai Drive
Maraetai, Auckland
PH: 536 5023

Indian Restaurant & Bar

Advertise your eatery here for only \$20+gst a week
Contact 021 026 14467

- by Jenny, foodbox.co.nz

With the new season carrots available, carrot juice is the perfect way to boost your immune system, especially with ginger. Here is my favourite "immune" boosting carrot juice recipe:

2 carrots
1 apple
2 cm of fresh ginger

If you want to experiment in your own kitchen, I recommend a base of 2 carrots, 1 apple and add 1 extra fruit or vegetables e.g. beetroot or a nectarine, for a surprisingly delightful concoction.

Foodbox.co.nz

Market fresh fruit and veg, premium restaurant quality meat and fish, and add on extras like milk, bread and eggs

- You choose
- You configure
- We deliver

PH: 536 4659
Pepperjacks
kitchen bar
www.pepperjacks.co.nz

EARLY BIRD DINNER SPECIAL
LIMITED MAINS \$20
ORDER BETWEEN 5-6PM

Mon: Closed
Tues - Sun: 9am till late
(Breakfast /Lunch/Dinner)

190 Jack Lachlan Drive, Pine Harbour Marina, Beachlands

Domino's

Open: Sun - Wed 11AM - 10PM
Thurs, Fri, Sat 11AM - 11PM
Ph: 0800 30 40 50 or 09 951 3959
www.dominos.co.nz
E: beachlandsdom@gmail.com



BEACHLANDS MEDICAL CENTRE

PH: 536 6006

Mon 8.00-7.30 **Tues** 8.00-5.30
Wed 8.00-5.30 **Thur** 8.00-5.30
Fri 8.00-5.30 **Sat** 9.00-12.30

**No late nights during school holidays
& closed statutory holidays**

**Book appointments online at
www.connectmed.co.nz**

Doctors:

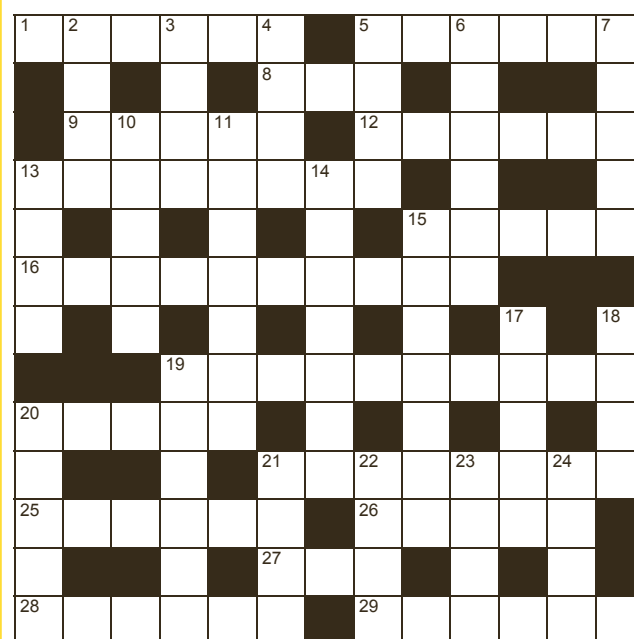
Dr Nigel Brown
Dr Michael Clarke
Dr Stephen Kardos
Dr Holger Konrad
Dr Rowena Poole
Dr Nikola Retford
Dr Rebecca Starr
Dr Andrew Reid

**Other services: Psychiatrists, Counselling services,
General Surgeon & JP**



**129A Beachlands Road, Beachlands
POHUTUKAWA COAST SHOPPING CENTRE**

RAYWHITE BEACHLANDS CROSSWORD



Paula Jooste
021 0290 8007
paula.jooste@raywhite.com

RayWhite.

D089E

Across

1. Strategy (6)
5. Afternoon nap (6)
8. High temperature (3)
9. Communication industry (5)
12. First-born (6)
13. Next day (8)
15. Wrath (5)
16. Fulfilling (10)
19. Make weaker (10)
20. Pigs (5)
21. Uncontrolled emotion or excitement (8)
25. Dark blue dye (6)
26. Ultra (5)
27. Court (3)
28. Very destructive (6)
29. Cut out surgically (6)

Down

2. Bullets (abbr) (4)
3. Commotion (2-2)
4. Blacken (4)
5. Anxious state (4)
6. Conclusion (6)
7. Church centrepiece (5)
10. Containing nothing (5)
11. Annoying (7)
13. Allocated job (4)
14. Long, adventurous journey (7)
15. Income from an investment (7)
17. Cavalry sword (5)
18. Greek cheese (4)
19. Improve quality or value (6)
20. Expertise (5)
21. Long, doleful cry (4)
22. Camera fitting for flash (4)
23. Long, demanding activity (4)
24. Showy, purple flower (4)

Answers on page 14

Community Calendar

Weekly events

Advertising in our Community Calendar is free. Activities must be not-for-profit and have a community focus. For listings, email info@pctimes.co.nz - include activity, day of week, time, venue and contact details.

FRIDAY

- **CITIZENS ADVICE BUREAU** 1-3pm. 1st and 3rd Fridays of the month at Beachlands Library. 2nd and 4th Fridays of the month at Maraetai Library. Ph Louise 09 576 8331. Free, confidential advice on a range of matters.
- **TE WAIROA NURSERY** Potting Bee, 9am-12pm. E: 2jodiem@gmail.com
- **CLEVEDON ART GROUP** McNicol Homestead 10am to 12noon. Free tuition available. New members very welcome. Marian 027 296 3827
- **SENIOR CIRCUIT:** 9am Te Puru Centre, \$5 Ph 536 5360.
- **COTTAGE CAFES** on first and third Fridays of each month 10am till 12pm - FREE great coffee and food, awesome company.
- **BeachUTH:** 7-10pm, Youth Group for years 9-13, Y7/8 6-7pm Beachlands Baptist Church. Ph: Lisa Leat 021 068 7300, E: lisa.leat@xtra.co.nz
- **CYG YOUTH GROUP** for years 9-13. 7.30-9.30pm, Clevedon Hall. Contact Fran 021 326 237 or fran@clevedonpresy.co.nz
- **KAWAKAWA ORERE YOUTH** Thursdays 6.30pm at Kawakawa Bay Hall - FREE for ages 10-18yrs. See Facebook for updates and info.

MONDAY

- **POHUTUKAWA COAST PLAYGROUP:** 9.30-11.30am, Beachlands Memorial Hall.
- **THE GOLDIES WALKING GROUP:** 8.45am, Pine Harbour Marina ferry base, or another local site. Ph: Chris Shirley 536 5106/027 498 7857.
- **SENIOR CIRCUIT:** 9am \$5 Te Puru Centre
- **CASUAL BADMINTON:** 7.30-9pm, Te Puru Centre, \$5. Ph: 536 5360
- **ST JOHNS YOUTH:** 6-7.30pm, St Hilda's Church, Wakelin Road.
- **CASUAL TABLE TENNIS:** 7.30-9pm. Te Puru, \$5
- **SOCIAL TENNIS:** Adults beginners/intermediate 7-9pm Te Puru. Linda 0211253964 maraetaitennisclub.co.nz.

TUESDAY

- **COASTAL PLAYGROUP** PC Presbyterian Church, 5 Jacobs Way, Maraetai. 9am-12pm. Bubs till 5 yrs. Ph Sarah 022 082 6432.
- **COFFEE & KIDS** 9.30 - 11am, Beachlands Baptist Church, playgroup, refreshments, home baking.
- **KOKAKO VOLUNTEER DAY:** 8.15am-3.30pm, Northern Hunua Ranges. Ph: Mags Ramsey 536 7012.
- **PRE-SCHOOL RUNNING RACES** from 6pm at Te Puru.
- **RUMMIKUB** 1pm - 4pm, Te Puru Centre \$2. Ph: Bernadette 021 170 9350.
- **MARAETAI (LAWN) BOWLING CLUB:** Cnr Te Pene Road. Roll ups Tuesday, Thursday, Saturday. 1pm. Enquiries. Ph Derek 536 4626
- **CASUAL BADMINTON:** 9.30-10.30am, Te Puru Centre, FREE.
- **BASKETBALL:** All ages, Te Puru Centre. Email pcbasketballclub@gmail.com. Ph: 027 775 5320.

gmail.com. Ph: 027 775 5320.

- **MEN'S AND INTERMEDIATE/ADVANCED LADIES TENNIS:** Te Puru. 7pm to 9pm. Contact Stephen 021 217 7587
- **HOUSIE/BINGO** Beachlands Charter Club, 7.30pm, \$15.
- **THE POHUTUKAWA COAST CHOIR:** 7-9pm, Presbyterian Church, 5 Jacobs Way, Maraetai. Ph: Sue 022 415 6897.

WEDNESDAY

- **JP SERVICE DESK:** 5-6.30pm, Beachlands Medical Centre, upstairs, Pohutukawa Coast Shopping Centre
- **COASTAL MAINLY MUSIC** PC Presbyterian Church, 5 Jacobs Way, Maraetai. 9am-12pm. Bubs till 5 yrs. Ph Sarah 022 082 6432.
- **SENIOR CIRCUIT:** 9am \$5 Te Puru Centre First Wednesday of the month BYO plate for coffee after.
- **SENIOR SPORTS:** 10am-12pm, Te Puru Centre. All welcome. FREE
- **SENIOR GYM GROUP:** 1 - 2pm resistance training. 2- 3pm yogalates. Perform Fitness Gym, Formosa Sports Centre. Ph Chris Shirley 536 5106 or 536 7231
- **PEST CONTROL DAY:** Southern Hunua Ranges, Ph: Mags 536 7012, E: mags.ramsey@aucklandcouncil.govt.nz
- **MANUKAU MASTERS SWIMMING CLUB:** Wed & Sat, carpooling from Beachlands Maraetai: contact president@manukaumasters.co.nz
- **"CREATIVE WINGS" ART FOR THE SENIORS:** St Hilda's Church, 3 Wakelin Road, Beachlands 10am-12pm. Call 536 6124 if you would like transport.
- **NATTER N STITCH** 12.30-4pm, Te Puru. Phone Diane 0274 756 526.
- **KAWAKAWA BAY PLAYING WITH MUSIC** 10.30am at The Cottage. Facebook: Kawakawa Bay Music or ph Rhiannon on 021 132 2412
- **KAWAKAWA BAY CRAFTERS** K Bay Hall, 10am-12pm. Ph 292 2666.
- **MANCAVE** 12.30-1.30pm. Shared luncheon for semi retired/retired men. BYO Lunch. Beachlands Baptist Ph 536 6360
- **GIRL GUIDES:** 6.30-8pm, Beachlands Memorial Hall
- **CLEVEDON FIRESIDE BRIDGE CLUB:** 10.15am, Anglican Church Hall, Clevedon. Lessons available. Ph: Pauline 299 7433 or Jill 530 8562.
- **MARAETAI BEACH INDOOR BOWLING CLUB:** 7pm, Maraetai Hall, Rewa Road. Ph Gae 536 6227 or 027 676 6473.
- **WRIGGLE & RHYME FOR 0-2 YEARS:** Every second week. Maraetai Rural Library or Beachlands Rural Library
- **HILLPARK SCOTTISH COUNTRY DANCE CLUB** 7.30-9.30pm, Hillpark Primary School Hall, Manurewa. Contact: Heather 09 267 6375.
- **MAHJONG:** 10am-12pm, Te Puru, \$2
- **DANCE IN THE DARK** - Women only, 7-8pm Te Puru Scout Hall \$5 first time, \$10 thereafter. Contact dancenoireast@gmail.com or Facebook Dance Noir NZ

THURSDAY

- **MAINLY MUSIC.** Sessions at 9.30am and 10.45am. Beachlands Baptist. Morning tea served between the sessions. Ph 536 6360

Fortnightly, monthly & one-off events

FREE LEGAL CLINIC

COAST CITIZENS ADVICE BUREAU

Free 15 minute general legal advice only. Appointments now available on Thursdays. Bookings essential phone 5768331 or email enquiries.pakuranga@cab.org.nz

LET'S DO LUNCH

Free community lunch, **NEXT LUNCH 8 APRIL.** 12.30pm Beachlands Hall. Ph: 536 6124.

OMANA STAMP CLUB

SECOND TUESDAY OF THE MONTH, 1.30pm at Maraetai Library. Ph David 530 8869 or Graham 536 6958.

POHUTUKAWA COAST TOASTMASTERS

7-9PM EVERY SECOND WEDNESDAY in the Beachlands School Staff Room. pohutukawa@toastmasters.org.nz or Craig 0272866751.

POHUTUKAWA COAST COMMUNITY ASSOCIATION (PCCA)

7.30PM THIRD WEDNESDAY OF EACH MONTH, Rowan Muir Community Centre, 211 Maraetai Drive.

POHUTUKAWA COAST ROTARY

SECOND AND FOURTH THURSDAY OF EACH MONTH, 6PM, Pepperjacks, Pine Harbour.

COTTAGE CAFE

FIRST AND THIRD FRIDAY EACH MONTH: 10am-12pm Kawakawa Bay Presbyterian Church. Ph: Jan Rouse on 292 2701.

BEACHLANDS/MARAETAI U3A

TUESDAYS: Third Tuesday of each month, **10-12.00pm** St Hilda's Hall, 3 Wakelin Rd. Interesting programme, morning tea. All welcome.

COUNTRY AND VARIETY MUSIC CLUB

Beachlands-Maraetai: fortnightly on Thursdays, Maraetai Bowling Club. 7-9.30pm. All welcome. Contact: Paula 09 530 9141 or 021 059 2444. Pohutukawa Coast: fortnightly on Saturdays, Whitford Hall. 1-4pm. All welcome. Contact: Paula 021 059 2444.

- **SENIOR EXERCISE:** 9.15am. A gentle exercise program at McNicol Homestead. Contact Cath on 021 349 417
- **GENTLE EXERCISE FUN & FRIENDSHIP FOR SENIORS 65YRS+** \$5 per session 10am-12.30pm St Hilda's Church Hall, Chris 021 133 5283
- **TOY LIBRARY:** Thurs 10.00am-12.00pm, Sun 9am-10.00am. 59 Third View Ave. Beachlands. 021 492 325. Term time only.
- **LINE DANCING:** 10-11am, Memorial Hall, \$5. Ph: Karen 021 213 6020.
- **ADULT GYMNASTICS/FITNESS CLASS:** 11am-1pm FREE Te Puru

Sunkist seaweed leads to a stink time for local residents

Local residents living near Sunkist Bay, Beachlands are complaining about the stench from rotting sea weed that has invaded the bay over summer and washed up on the beach.

The weed was first noticed several weeks ago at the eastern end of the beach.

Since then locals report it has increased in volume and dispersed along the length of the beach.

"I think it's terrible - and it's obvious that something needs to be done about it," says Franklin Local Board member Malcolm Bell, who lives above the bay. "You can't really walk

along the beach any more - I saw a man trying to swim amongst the weed and that can't be a pleasant experience."

He has lodged a request for Auckland Council's coastal science team to identify the weed and for council to have it removed, but has not yet heard back.

"I would like to see the weed gone but the process is they want to identify it first and what its origins are but I have been assured they will then engage community facilities to come and clear the beach. It probably depends on their analysis of the weed where they can take it to."

He has also asked for the council's Healthy Waters department to test samples from Sunkist Bay to assess water quality.

"I don't think it can be promoting good health," says Malcolm of the weedy water.

He says he is at a loss as to why there has been so much weed on the beach this summer, but believes the combination of unusually high temperatures and a stable weather pattern may be contributing to the weed stinking and not dispersing.

While 'stinky' weed has been seen at Beachlands beaches before and has



The thick 'stinky' weed that first covered the eastern end of Sunkist Bay, Beachlands.

been cleared from neighbouring Omana in the past, Malcolm says it was last recorded as being a problem at Sunkist Bay in 1992 when it was cleared off the beach by the then Manukau City Council.

Catch of the week photo competition



Charlie Wilson (14-years) has only been diving a short time, but it looks like he is giving his dad a run for his money. Charlie caught this huge crayfish at Spot X in the Hauraki Gulf.

To enter the Catch of the Week photo competition, email your photo and details about your catch (where it was caught, name of the boat, what you did with the fish, plus any other special details) to liz@gasmaraetai.co.nz.

The weekly winner will receive a \$50 Top Catch voucher from GAS Maraetai, and the season winner will receive a fishing rod and reel.

ACCOMMODATION

WANTED TO RENT

Married couple looking for 1-2 bedroom rental, \$300-\$500/week incl free power/water. Long term, 10 years, Beachlands. Ph Grace 021 080 33642.

FOR RENT

Rural 1 bedroom unit, separate lounge, bathroom and internal garage. 8km from Clevedon village. Suit single person. Non smoker no pets. \$215/week text details to 021-799-845

BUY/SELL

JEWELLERY WANTED TO BUY

Old gold, rings, broken chains, unwanted jewellery for scrap etc. Paul Taylor Jewellers, Shop C7 Pohutukawa Coast Shopping Center. Ph 536 4200

PRE-LOVED CLOTHING SALE

9am Saturday March 21st. Children's, Adults, Shoes, Some Gifts. Most Under \$5 13 Pony Park Place, Beachlands

GRAZING

Grazing available, Whitford, 30 acres with good fencing, water and plenty of grass. Suit cattle of any age. Price neg. Ph Mike 021 837 413.

FOR HIRE

BOBCAT/DIGGER HIRE

Excavations, driveways, landscaping, lawn laying, topsoil, metal supply, site clearing, rubbish removal, truck hire. Ph Grant 0274 758 468.

PUBLIC NOTICES

CLEVEDON ANIMAL FARM

Family farm walks, pony rides and children's parties. Visit www.clevedonanimalfarm.co.nz or call Lynn on 292 9231.

WORK WANTED

CHIMNEY SWEEP

Mike Johnson - Your local sweep, 15yrs experience. Report provided. Ph 021 251 0324 or 536 6394

HANDYMAN

You name it... renovations, DVS installation, gardening, retaining, fencing, landscaping, trellis, light building and maintenance work. Ph Gary on 021 90 30 20 or 536 6358.

MOWER AND CHAINSAW REPAIRS

All small engine repairs, mowers, ride-on mowers, chainsaws, weedtrimmers, & chain saw sharpening. No job too small. Free pick-up local area only. Ph: 536 5621 or mob 027 308 7777.

PAINTING/PLASTERING

Interior and exterior quality painting. Refs available. Ph: Gary 021 90 30 20 or 536 6358.

READYLAWN/ LANDSCAPING

Specialising in ready-lawn, seeding, lawn levelling, turf cutting & landscaping. Locally based Ph: Adam on 022 015 2805.

RENOVATIONS

Bathrooms, kitchens, toilets - build, tile, glass, flooring, plaster and paint. Start to finish. Exp. builder. Refs avail. Ph Gary 021 90 30 20 or 536-6358. Oakes Build Landscape Maintenance. www.oakes.nz.

TCL CONSTRUCTION LTD

For all your building needs. New builds, renovations, decks, bathrooms etc. Licensed building practitioner Call Justin on 021460011, justin@tcl.org.nz, <https://tclconstruction.co.nz/>

WINDOW CLEANING

Windows in/out, exterior house wash, gutter clearing. Exp operator, Ph Keith at Panoramics on 0272 453 444 or 530 8136.

SITUATIONS VACANT

BEACHLANDS SCHOOL LEARNING ASSISTANT: TECHNOLOGY DEPARTMENT

Monday to Friday

Candidates would ideally be able to think creatively whilst allowing students to develop their own ideas. Have some ability in the use of sewing and woodworking tools. An ability to use simple photography techniques. A willingness to learn new skills. A desire to work with Years' 7 and 8 students and an ability to relate to students of this age group. A good sense of humour necessary!



Professionals & Trades

BINS



PINK BINS

3, 4.5, 6 & 9 metre bins
3, 4.5 metre hardfill bins

We are reliable and we recycle!

Ph: 0800 PINK BINS (746-524)

Email: bins@pinkbins.co.nz www.pinkbins.co.nz

WHITE WASTE LTD Ph: 0800 720 710



Your Local Skip Bin Supplier

BOATING & MARINE

OVLOV MARINE PINE HARBOUR

09 536 5249

www.ovlov.co.nz

Sales and Service of outboard motors, inboards, sterndrives and IPS.



Situated in Pine Harbour Marina and mobile we can care for your vessel be it big or small.

Contact the team on 536 5249 or email on phil@ovlov.co.nz for service enquiries and partsph@ovlov.co.nz for spare parts.



DENTAL

Great Smiles. Better Health.

At Anthony Hunt Dental we are proud to have been serving our community since 2011.

Leading the way using the latest techniques and technology, we create great smiles and better health for the whole family.



(09) 292 9071 smile@ahdental.co.nz
52 Papakura-Clevedon Road
Clevedon
www.ahdental.co.nz

ANTHONY HUNT
Dental
GREAT SMILES • BETTER HEALTH

If you would like to advertise in this section please phone
021 026 14467 or
email: advertising@pctimes.co.nz

Professionals & Trades



smile dental
giving you one more reason to smile

**QUALITY AFFORDABLE
FAMILY DENTISTRY**

***FREE dental examinations**
*excl. xrays

129 Beachlands Rd, Beachlands, Auckland

www.smiledental.co.nz **09 302 0808**



Pohutukawa ELECTRICAL

No job too small - No job too big!
Fast, reliable service.
Qualified lighting designer

PH: 536-4076 FREE Quotes
MOB: 021 769 964 www.pohutukawaelectrical.co.nz

FUNERAL DIRECTORS



souly funerals.co.nz **FREEPHONE 0800 47 68 59**

**No Hidden Costs
PROFESSIONAL, AFFORDABLE, CARING**

Souly Cremation Packages from \$1745 inc.gst
Souly Burial Packages from \$1995 inc.gst *plot & interment

HEALTH & BEAUTY



renew beauty room **Julie Green C.I.B.T.A.C.**

P: 09 536 4484 | 021 175 1644
E: julie_ann21@hotmail.com

beauty therapy | make-up

- Blend Method Electrolysis • Facials using Sothy's products
- Waxing • Lash/Brow Tinting • Manicures & Pedicures • Massage
- Make-up for Weddings or Special Occasion using M.A.C. Cosmetics
- **GIFT VOUCHERS AVAILABLE • APPOINTMENTS ONLY**

LAWNS & LANDSCAPING



R & R Garden Services
- We do the hard yards for you -

Email: randrgardenservice@gmail.com

Your local lawn and garden specialist
Call Richie: 021917332

Qualified Landscape design and Implementation
Call Roanne: 0272528183

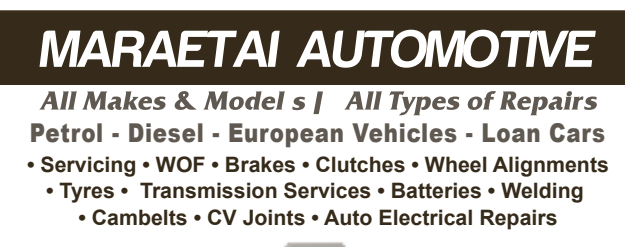


Kathryn Anderson
LANDSCAPE ARCHITECT
BLA (Hons), associate NZILA Qualifications

M: 021 263 4101
E: kath@landscapestudio.co.nz

Landscape designs that suit your budget & lifestyle

MECHANICAL REPAIRS



MARAETAI AUTOMOTIVE

All Makes & Model s | All Types of Repairs
Petrol - Diesel - European Vehicles - Loan Cars

- Servicing • WOF • Brakes • Clutches • Wheel Alignments
- Tyres • Transmission Services • Batteries • Welding
- Cambelts • CV Joints • Auto Electrical Repairs

131 Maraetai Drive, Maraetai **Ph: 536 6542** **ALL WORK GUARANTEED**
HOURS: Mon - Fri: 8am-5pm

OPTOMETRISTS



HOWICK VILLAGE OPTOMETRISTS

phone 534 8716
www.howickoptometrists.co.nz

PLUMBING



Ford Plumbing
Certifying Craftsman Plumber

New Homes - Renovations - Water Filters & Pumps
Hot Water Cylinders - Repairs **Call Mark on...**

www.fordplumbing.co.nz **536 5698**



DYNAMO PLUMBING
MAINTENANCE SPECIALIST

24 hours/7days A WEEK • NZ CERTIFIED PLUMBER
LOCALLY OWNED & OPERATED

535 0439 • 021 068 3818
dynamoplumbing.ltd@gmail.com

STAINLESS FABRICATIONS



DARRYL SMITH
STAINLESS FABRICATIONS LTD

- Alloy Boat Repairs
- Alterations & Custom-made Accessories a Specialty, Including Architectural Alloy, Stainless Steel & Steel Fabrications

Ph: 266 8774 or Fax: 267 1104
Email: darrylsmithstain@actrix.co.nz

TREE SERVICES

CALL NATHAN 021 196 6509



CHIPPING **LAND CLEARING** **HEDGE TRIMMING** **TREE PRUNING** **TREE REMOVAL** **STUMP GRINDING**

FIND US ON FACEBOOK coastalcutters@hotmail.com



Limb to Limb tree care **Free Quotes**

Hedge Trimming • Tree Pruning • Tree Removal
Stump Grinding • Mulching • Planting

www.limbtolimb.co.nz
Ph: 0800 PRUNE IT or 021 259 0987



DS TREES LTD

Land Clearing
Tree Maintenance
Tree removal
Stump Grinding
Hedge Care

Phone Doug
021537171 • 09 5378595
info@dstrees.co.nz
www.dstrees.co.nz

VETERINARY



Franklin Vets Beachlands

1/43 Kouka Road,
Pohutukawa Coast
Shopping Centre
538 0010 • beachlands@fvs.co.nz
www.franklinvets.co.nz

OPEN HOURS
Mon-Friday 8am-6pm
Saturday 9am-3pm



Make the right choice about your dental care

We are dedicated to your personal well-being through dental health

- Teeth whitening
- All ceramic tooth filling materials using CerecAC onmicam, 3D technology
- Permanent tooth replacements with dental implants
- For gum health and maintenance call our hygienists Shelley & Fernanda
- All aspects of general dentistry

FREE DENTISTRY IS AVAILABLE FOR ALL YOUNG ADULTS
Eligible from Year 9 until their 18th birthday Contact us today to learn more
Evening appointments available
Call us now on 530 8461 or email: info@whitforddental.co.nz

• Rick Parfitt B.D.S • Shelley Chadwick R.D.H.
Alex Lindsay B.D.S • Fernanda Flores R.D.H.
Whitford Village, Whitford



SanctuaryDental
All about your wellbeing

- Children's dentistry
- Tongue tie release - using water laser
- Safe mercury amalgam removal
- Orthodontic treatment without extracting teeth
- Interest free terms over 1 year

Sanctuary Dental
Unit 20, 2 Bishop Dunn Place, Botany **09 273 2173**

Sanctuary Dental
24-34 Seddon Street, Pukekohe **09 238 4619**

DRAINAGE & EARTHWORKS



PROBUILT EARTHWORKS DRAINAGE

We provide all drainage services including:

- Stormwater and Waste Water
- Public and Private Drainage
- Repairs and Maintenance
- Civil Drainage
- Subdivisions
- Excavations and Siteworks

Call us for your earthworking & drainage solutions
Gary 021 617 611

ELECTRICIANS



Your Local Registered Electricians
Ph 536 6800
For prompt professional electrical services with a smile

- www.awe.co.nz
- help@awe.co.nz
- free quotes

AUCKLAND WIDE ELECTRICAL
Providing electrical services on the Pohutukawa Coast & throughout Auckland

BUSINESS LISTINGS

List your business here to be seen by more than 6,000 homes each week
A 6-month, single line listing costs just \$150+gst
EMAIL: INFO@PCTIMES.CO.NZ | PHONE: 09 536 5715

ACCOUNTING SERVICES

Probiz Systems Ltd, Sharon Bramley	530 8036
Ian McLennan, CA www.iwm.co.nz	536 6715
Diane Myers CA, diane@myersca.co.nz	292 9470
beanies2U, call Tanya chartered accountant	027 5533 570.
Pat Callinan, karenh@patcallinan.co.nz	533 8420
Hills & Associates Ltd CA, Randall Hills	530 9207
Business Allsorts, MYOB & Xero Experts	536 5850
Peat Johnson Murray	869 2091
Complete Bookkeeping Solutions	021 947 793

AERIALS, TV & HOME THEATRE

Smart Home Technology. Freeview, aerials, phone jacks, TV outlets, home theatre, new home prewire.	
Phone Sunny	0800 786 266 or 027 2841 325
Auckland Wide Electrical	536 6800, 021 998 665
Digital Solutions Ltd: New & existing home TV setup, UHF & Sky distribution, Data/WiFi improvement, TV surround sound, Security alarms and cameras. Call Rodger:	021 659 677

AGGREGATES

Beachlands Building & Hire Centre	536 6567
Manukau Quarry Ltd 33 Ha Cresent Wiri Manukau	0800-767-552

ALUMINUM WINDOWS:

www.windowrenovations.co.nz	
Repairs and Replacements	021 297 2320

APPLIANCE SERVICING

Axial appliance servicing Service@axial.co.nz	573 0877
Appliance Wizard Ltd Ph Paul	0275 784 226

ARBORIST

Limb to Limb Tree Care	021 259 0987
------------------------	--------------

ARCHITECTS

Peter Diprose www.diprose.co.nz	530 9065 or 021 125 1498
---------------------------------	--------------------------

ARCHITECTURAL PLAN & DESIGN

Ross J Willoughby	530 9358
Brian Duncan brian@egraph.co.nz	021 998 935

AUTO ELECTRICIAN

Mobile Auto & Marine	0800 662 352
----------------------	--------------

BATHROOM RENOVATIONS

Complete design and build by top tradesman, 10 year guarantee call Allan	0210 290 3978
--	---------------

BEACHLANDS STORES

Beachlands Building & Hire Centre - hardware, hire and garden centre	536 6567
--	----------

BEAUTY & BARBERS

Xtreme Beauty & Barbers	600 2325 or 021 992 686
www.xtremebeautybotany.com	

BED & BREAKFAST

Brookwood Lodge, Beachlands.	536 6975 or 0274 796 453
------------------------------	--------------------------

BLIND SERVICES

Blindworks - For all New Blinds - Plus Blind Cleaning and Repairs	
www.blindworks.co.nz	0800 999 229

BOOKKEEPERS

Business Allsorts, MYOB & Xero Experts	536 5850
--	----------

BUILDERS

Bryant Builders Ltd	0274 935 507 or 2928 777
Homing Instincts Ltd, ph Gareth Price	021 618 181 or 536 6422
Michael Nootebos	536 6628 or 0274 799 776
Superior Developments Ltd	021 079 2589
Impression Builders Ltd	021 393 140
or dean@impressionbuilders.co.nz	

BUILDERS' SUPPLIES

Morton Timber Co. Clevedon	292 8656
----------------------------	----------

CAR VALET

John's Car Valet Services	536 4324 or 021 825 381
---------------------------	-------------------------

CITIZENS ADVICE BUREAU

Weekly at Beachands or Maraetai Libraries	576 8331
---	----------

COMPUTER SERVICES

Andrew WhatWhyWhen.com	0220 HELP PC or 536 6514
------------------------	--------------------------

CONCRETE SERVICES

Bellingham Concrete Ltd	Contact Dean on 0274-533-059
-------------------------	------------------------------

DENTISTS

Sanctuary Dental	273 2173
Whitford Dental Group	530 8461 or 530 8271
- Dr Rick Parfitt & Dr Antonia Nagel	
- Hygienist - Shelley Chadwick	530 8461, 530 8271
Anthony Hunt Dental Ltd, Dr Anthony Hunt, Clevedon	292 9071
Marina Dentists Pine Harbour	536 4361
Smile Dental Beachlands	
- Your local dentist. New patients welcome.	022 8888 171
- Free examination since 1996	09 302 0808
www.smiledental.co.nz	0800 4 smile

DIESEL MECHANIC

Mobile service: trucks, machinery, light commercials and trailers. Ph Craig Waters	021 613 152
--	-------------

DIGGER & TRUCK HIRE

The Little Digger	027 278 0335 or 536 4424
Digger Landscapes www.diggerlandscapes.nz	021 415 832

DOCTORS

Beachlands Medical Centre	536 6006
---------------------------	----------

DOG WALKING

Happy Hairy Hounds, Caroline	021 040 5780
------------------------------	--------------

DRAINLAYERS

Vibe Earthmovers and Drainage	call Vincent 0272 225 377
Probuilt Earthworks Drainage	call Gary 021 617 611

DRILLING

Drillforce - water bores, divining, pump advice	09 267 9100
---	-------------

EARLY CHILDHOOD EDUCATION

B/M Playcentre Mon-Fri. 9am-12	536 6015
in Beachlands School grounds	
Whitford Early Learning Centre	530 8726
Clevedon Kidz Early Childhood Centre	2928 358
BestStart Coastal	536 6737
BestStart Sunkist Bay Kindy	536 5313
Pikopiko Learning Centre, Whitford	530 8697

EARTH MOVING CONTRACTORS

Henri & Lynda Habraken	0274 961 472, 536 6806
www.brookbycontracting.co.nz	3.5t w Augers, truck hire/cartage
	530 9290 or 027 530 9290
Riordan Contracting	09 530 9429 OR 027 430 9429
Glenn Keane Ltd: diggers and truck hire/cartage	0274 731 403
Superior Developments Ltd	021 079 2589

ELECTRICIANS

Auckland Electrical & Pump Services	536 4074,027 4741 579
Auckland Wide Electrical	536 6800, 021 998 665
Pohutukawa Electrical	536 4076, mob 021 769 964
Positive Electrical Services	021 801 606
ASAP Electrical, Chris O'Donnell	0274 15 30 15
Go Electrical, Grant O'Halloran (Beachlands)	021 987 228

ENGINEERS - CIVIL/ENVIRONMENTAL/STRUCTURAL

CivilPlan Consultants Ltd	222 2445
Fraser Thomas Ltd	278 7078

FENCING CONTRACTORS

Craig McLeod	027 292 5844
White Fencing	2928 064, 0274 957 868
~ rural fencing, retaining walls	www.whitefencing.co.nz

FIREWOOD

Ignition Firewood	0800 WOOD NOW
-------------------	---------------

FLOORING

All About Floors, Darrel	570 5300, 021 688 875
Nicks Floor Sanding	536 6916, Mobile 021 875 456

FLORIST

Clevedon Flowers, www.clevedonflowers.co.nz	292 9540
Harbour Rose Florist: Sandra	021 024 35299

FUNERAL DIRECTORS

Resthaven Funeral Services	
Rachel Benns & Raewyn Proctor	533 7493, 267 2530
Ensom Funerals (John Ensom, Jo Nevin)	266 6646 or 524 6765
Fountains Funeral Directors & Monumentalists -	
Papakura, Franklin and Manurewa	298 2957 or 266 6177
Howick Funeral Home Robert Johnstone - Mark Rowley	534 7300
Souly Funerals Beachlands	0800 47 68 59

GARAGE DOORS

Repairs & Service, Metro Garage Doors	263 6608
---------------------------------------	----------

GEOTECHNICAL SERVICES

Fraser Thomas Ltd	278 7078
-------------------	----------

GIBSTOPPING

Wayne Mackenzie	021 882 276 or ah 530 9031
Greg Brown	021 067 6104, ah 536 5989
specialistlinings.co.nz We fix, stop, and paint	0800 54 64 64
Gib stopping & painting - Tony	0274 966 394 or 536 6477

GLASS AND GLAZING

Manurewa Glass	266 7794
Howick Glass	535 4180

GUTTER CLEANING

Skyhigh Roof and Gutter Cleaning Ltd	
Website: www.skyhigh.nz	021 951 719

HAIRDRESSING

Spirit Hair-Makeup-SprayTanning	021 1630 174
Hair Do's @ Maraetai ph Denise	0274 599 901
Cooper Hairdressing, 16 Te Pene Rd, Maraetai	027 329 1781
GoldilocksHair Care Professionals	
Pohutukawa Shopping Centre	536 5805

HANDYMAN SERVICES

Local Handyman:	536 5050 or 021 156 7370
Oakes Build Landscape Maintenance	www.oakes.nz 021 903 020
Lifestyle Property Services Ltd	0272 533 336

HEAT PUMPS

Positive Electrical Services	021 801 606
------------------------------	-------------

HIRE & GARDEN CENTRE

Beachlands Building & Hire Centre	536 6567
-----------------------------------	----------

JEWELLER

Paul Taylor Manufacturing Jewellers	536 4200
Repairs/Remodelling/Valuations/Insurance Replacements	
Shop C/7, 129 Beachlands Rd, Pohutukawa Coast Shopping Centre	

KITCHENS

La Bella Kitchens Ltd, www.labellakitchens.co.nz	530 9092
Kitchen Craft Ltd, Ph Warren	09 274 4221
For Sizzling Kitchen Design & Cabinetry	www.kitchencraft.co.nz

KITCHENS (CONTINUED)

Gold Kitchens Ltd, www.goldkitchens.co.nz,	
0508 GO GOLD or ph Jordan Dale:	021 885 853
Inhouse Design & Concepts Ltd	www.inhousedesigns.co.nz
Ph Brendan	021 272 1974, 536 4625

KNIFE AND GARDEN TOOL SHARPENING

Ph Chris Baird	536 6181 or 021 536 618
----------------	-------------------------

LANDSCAPING

Eastside Landscapes	021 484 158
Kai Gardens	Karen - 021 046 1463

LAUNDROMAT

7 DAYS, at GAS Maraetai, 131 Maraetai Drive, Maraetai	536 4218
---	----------

LAWNMOWING & GARDENING SERVICES

Greenacres - Stephen Howe	292 4165 or 021 2266 753
Prolawns (Beachlands based) Shane	536 4351 or 021 746 887
R&R Garden Services Richie:	021 917 332, Roanne: 027 252 8183
The Green Warriors, Beachlands (Glen)	021 0253 1249

LAWNMOWERS SALES/SERVICE/REPAIRS

B'nds/M'tai mower/chainsaw repairs	536 5621 or 027 308 7777
------------------------------------	--------------------------

LEGAL SERVICES

Swayne McDonald & Co (Beachlands/Maraetai/Whitford)	265 2700
John Burton - Maraetai & Beachlands	536 5279 or 299 7780
Sutcliffe Matson Law	279 8351 or 021 327 030
Mobile lawyers available after hours	
James Donovan, 10/42 Kouka Rd, Beachlands	869 4565

LOCKSMITHS

Local Locksmith - Tony+	536 5050 or 021 156 7370
Armstrong Smarter Security	0800 506 111

LPG SUPPLIERS

Matagas	0800 954 427
---------	--------------

MARINE AND BOATING

Top Catch	536 5157
Ovlov Marine Pine Harbour LTD	536 5249

MECHANICAL REPAIRS

Clevedon Automotive Ltd	292 8441
Maraetai Automotive	536 6542
Pohutukawa Motors, 57 Third View Ave, Beachlands	536 6664
Garaway Autos	022 395 6185
Luke's Garage Ltd	09 218 6442 / 022 301 0412

MIRRORS

Howick Glass	535 4180
--------------	----------

OUTBOARD REPAIRS/MARINE ENGINEERING

Eastern Marine ~ Outboard, Petrol & Diesel Motors	536 6252
---	----------

PAINTERS & DECORATORS

DTS Wright Contracting Ltd	536 5239 or 021 40 1094
East Auckland Painting Ltd	027 619 2619
specialistlinings.co.nz We fix, stop, and paint	0800 54 64 64

PEST CONTROL

Coastal Pest Solutions (including rats, rabbits,possums, wild cats, pest birds, wasps & bees)	536 6020 or 0273 932 125
Professional Pest Control	536 6690 or 021 078 3622

PET ACCOMMODATION

Clevedon Kennels and Cattery	292 8789
Fairfield Pet Lodge, Clevedon	292 8852
Pets at Whitford Spa and Stay (PAWSS)	530 8860

PHARMACIES

Unichem Beachlands Pharmacy	536 6500, fx 536 6590
Pohutukawa Coast Pharmacy	536 6747, fax 536 6742

PHYSIOTHERAPIST

Beachlands Physio beachlandsphysio.co.nz	09 222 4120
Ultimate Physio 739 Chapel Road, Botany	272 9294

PLASTERING SERVICES

Solid Plastering, Bruce Parsons	021 981 812
---------------------------------	-------------

PLUMBERS

Dynamo Plumbing	535 0439 or 021 068 3818
BF Brown Plumbing & Drainlaying	0800 477 455
Complete Plumbing Services Ltd	0800 1000 33

PLUMBERS & GASFITTERS

Ashby Plumbing & Gas	292 2445 or 0272 553 499
----------------------	--------------------------

PROPERTY MANAGEMENT

Harcourts Beachlands Real Estate	536 6121, 0276 480 240
Rent People Ltd	0800 426 580
RobsonKerr Property Management	0508 762 786
Ray White Lighthouse Licensed Real Estate	536 7011
Barfoot & Thompson Beachlands	536 4990

PUMP SALES & REPAIRS

Auckland Electrical & Pump Services	536 4074, 0274 741 579
pumpsdirect.co.nz	536 5447, 0274 982 419
Complete Pumps	0800 100 033
Malmaks Water Shop	530 8872, 021 353 158

QUARRY

Manukau Quarries	263 0220
------------------	----------

REAL ESTATE AGENTS

Barfoot & Thompson Beachlands	536 4990
Barfoot & Thompson Whitford	530 8292
Harcourts Beachlands Real Estate	536 6121

REAL ESTATE AGENTS (CONTINUED)

Ray White Lighthouse Licensed Real Estate	536 7011
Bayleys Real Estate Limited	535 5480
RE/MAX Clevedon	292 8388

ROOFING SERVICES

Eastern Roofing Services, ph Steve	536 5875 or 021 865 615
Complete Roofing	0800 100 033
Alba Roofing -	021 584 530

SCAFFOLDING

Scaffold Connect Ltd	027 565 4130 or 09 215 4855
----------------------	-----------------------------

SECURITY SYSTEMS

ADS Security Ltd (alarms & monitoring)	536 6860
Armstrong Smarter Security and Alarms	09 274 0999

SEPTIC TANK CLEANING

SST Services phone Rob	09 2947611 or 0274 967430
------------------------	---------------------------

SHUTTLES