

'THE PAPER WITH THE MOST FOR THE COAST'

Kids enjoy reel good day out at fishing comp



There was a good turnout of children and fish at Maraetai Beach Boat Club's recent annual 'Kids off couches' fishing competition. Clockwise from above: Hadley Guard (4) measures his catch; Eve Crawford (13) with her prizes for 1st and 2nd place in the junior snapper category; Cohen Royal (8) shows how to correctly handle a landed fish.

Harcourts Hoeverd & Co.
"Building a reputation, not relying on one..."
Melissa Wright
 Sales & Marketing Consultant
M 021 181 1840
 E melissa.wright@harcourts.co.nz

SPECIAL AGENTS 003
IAN 0272859314
JENNY 02040002564
NICOLETTE 0277029157
BARFOOT THOMPSON

LIVING LOCAL ON THE POHUTUKAWA COAST
Clare Dower
 Residential Sales
 09 539 4720 | 021 2066 822
 clare.dower@bayleys.co.nz
BAYLEYS ALTOGETHER BETTER

Laminata Garden Sheds
 Designed as a kit set with assembly instructions for fast, easy installation just using a battery drill.
 1800w x 885d x 1955h or
 1800w x 1860d x 1955h
 Please contact us for a brochure and pricing.
 Our timber is sourced from renewable plantations
 Morton Timber Co. Ltd
 226 North Road, Clevedon 2248
 Ph 292 8656 or 021 943 220
 Email: office@mortontimber.co.nz
MORTON TIMBER CO. LTD

INSIDE: What went down at the WECS meeting? p3

Water poll results p4

Health & Style feature p8-10

Your home deserves Elite Service

LIST & SELL WITH BRIE & THE SECOND GENERATION REAL ESTATE TEAM

P : (09) 536 7011 or (021) 400 979
 E : brianne.bignell@raywhite.com
 W : rwbeachlands.co.nz
 A : 81 Second View Avenue, Beachlands

Ray White Beachlands
 Lighthouse Real Estate Limited
 Licensed (REAA 2008)



EmbroidMe
East Tamaki
Uniforms & Promotional Products
 Follow us on Facebook and Instagram for specials, competitions and giveaways
 Cnr Smales and Springs Rds, East Tamaki - 09 265 0300

James Gavin Donovan Solicitors

Ph.09 869 4565

For all your legal requirements

- Conveyancing • Commercial • Relationship Property
- Litigation • Traffic Offences • Wills, Estates and Trusts

info@jamesdonovan.co.nz

42 Kouka Rd, Beachlands

DEADLINES: Display advertising - 5pm Friday. Classifieds and News - midday Monday
 Ph: 536 5715 Email: info@pctimes.co.nz www.pctimes.nz

GET IN TOUCH**P:** 536 5715**E:** info@pctimes.co.nz**W:** www.pctimes.co.nz**F:** facebook.com/pctimes**A:** PO Box 5, Beachlands 2147
Level 1, 129A Beachlands Road,
Beachlands**EDITOR****Leanne Chamberlin**

021 426 207

leanne@pctimes.co.nz

ADVERTISING**Melody Cutfield**

021 0261 4467

advertising@pctimes.co.nz

CLASSIFIEDS

info@pctimes.co.nz

ACCOUNTS & CIRCULATION**Pam Rutherford**

536 7164

accounts@pctimes.co.nz

UPCOMING FEATURES**28 February** - Weddings,
Beachlands/Maraetai &
Clevedon/Whitford**6 March** - Urban East

The Pohutukawa Coast Times is distributed weekly to 6200 homes and businesses in: Whitford, Brookby, Beachlands, Maraetai, Clevedon, Alfriston, Kawakawa Bay, Orere Pt, Hunua, Paparimu

Member of the New Zealand Community Newspapers Association

**The PC Times 20 years ago:**

18 February 2000: Sewerage plant failing to cope with toxic load.

Weekly Tide Chart

21 Fri		12:17am ▼ 0.9m	6:45am ▲ 3.0m	
22 Sat		12:52am ▼ 0.8m	7:36am ▲ 3.1m	
23 Sun		1:46am ▼ 0.8m	8:23am ▲ 3.1m	
24 Mon		2:41am ▼ 0.8m	9:06am ▲ 3.2m	
25 Tue		3:21am ▼ 0.7m	9:47am ▲ 3.2m	
26 Wed		3:58am ▼ 0.7m	10:25am ▲ 3.2m	
27 Thu		4:34am ▼ 0.8m	11:02am ▲ 3.2m	

MARINE FORECAST - VHF CHANNEL 19
AUCKLAND FORECAST - 0900 999+ YOUR STD

Guest editorial

by MP for Hunua, Andrew Bayly

It's great to see communities pulling together in times of hardship.

People in the Beachlands-Maraetai community continue to struggle with a lack of water because of the current drought.

I became aware of the depth of the problem after receiving emails and Facebook messages, and I was grateful to see Auckland Council make an emergency water supply available at Te Puru. By the time I got there around 10.30am on Saturday, 8 February, more than 100 people had been to top up their supplies.

Thanks to Angela Fulljames of the Franklin Local Board for organising the emergency supply. And thanks too to Councillor Bill Cashmore who was trying to get more water tankers delivering into the area.

I was also impressed to learn that a young man called Eddie Uini, the founder of Orange Sky, is bringing his mobile laundry unit to Beachlands to run a free regular shower service to support anyone in need of water.

And well done to Kiwi Laundry boss Tim Grimley who has teamed up with Eddie to offer free laundromat use for anyone struggling to buy water whenever the Orange Sky unit is parked outside.

I feel for the people in the electorate who've been left high and dry by the

current drought. With no significant rain in the offing people need to conserve water and be patient as the water companies try to meet the demand.

Unfortunately, water will increasingly become an issue for us all as the impact of climate change hits home.

This summer has highlighted that and how it will inevitably mean much drier summers in the future. People will increasingly need to plan for their own water independence.

New Zealand is lucky. It has a great natural resource in its water but at most only 2 percent of it is captured - 98 percent flows into the sea.

We need to make sure that in urban areas the infrastructure is in place to allow people to access an adequate supply. Unfortunately, Beachlands isn't connected and it is a shame it wasn't from the outset.

On a wider level, farmers need to be able to capture water for their on-farm requirements so that they are making the most of the natural opportunity we have and are harnessing our plentiful supply of water.

Wastewater issues are also becoming important as we watch the deterioration of our harbours.

New Zealand represents around 0.02% of all the land area in the world yet we account for 1.7% of all its sediment runoff.

That's largely because we've cleared

most of the land near our coastline. Now having adequate protection around sediment run off is becoming crucial.

That's why, in my view, harbours need to be much more controlled and monitored.

It's interesting to note that the quality of the Manukau Harbour, for example, has improved substantially. That's largely because industrial waste no longer flows into the harbour and is processed by Watercare. Local iwi have also played a big part by walking the foreshore, identifying illegal runoffs and pipes leading to the degradation of the marine environment.

Over time as they've done this, we've seen the water quality gradually improve.

CLINIC TIME

It's almost time for the first of our constituents' clinics for the year.

On March 9, I'll be at Whitford from 10am, Beachlands from 11.30am and Clevedon from 1.30pm. If you'd like to make a time to see me, please call Judith at my electorate office on 09 238 5976.

It will be a chance for people to come along and talk to me one-on-one about issues or problems that might be affecting their lives.

Umupuia Marae urges motorists to slow down

Umupuia Marae has a message for motorists - slow down!

Spokesperson Zaelene Maxwell-Butler says it's not uncommon for cars to pass the marae travelling at 100kmh, despite billboards erected by Auckland Transport late last year urging drivers to slow down.

Under the speed limits bylaw passed by Auckland Council in October last year, the full length of Maraetai Coast Road is scheduled to become a 50kmh zone on 30 June this year.

Zaelene says that it is a joke that until then, half of the coastal road will remain a 100kmh zone, particularly in light of a large sink hole which has undergone numerous repairs, and increased numbers of vehicles running off the side of the road.



Local iwi say the current 100kmh speed limit past Umupuia Marae poses a danger to pedestrians.

"We need common sense and caring for our community and those that come into our community, Auckland Transport. Open space signage, I would suggest, is not appropriate," says Zaelene.

SUTCLIFFE MATSON
LAW

**MOBILE LAWYERS SERVING THE
POHUTUKAWA COAST**



BRADEN MATSON AND **BREANNA FULLER**
MA/LLB | PARTNER BCOM/LLB (HONS) | SOLICITOR

Conveyancing, Refinancing, Wills,
Powers of Attorney, Business Transactions
Family Trusts,
and Other General Legal Needs.

We are happy to meet you after hours
at your home for convenience.

Ph: 09 279 8351 or Braden: 021 327 030
braden@smlaw.net.nz | breanna@smlaw.net.nz
www.sutcliffematsonlaw.net.nz

Our Lady Star of the Sea
CATHOLIC MASS

SATURDAY • 5:00PM

FUNCTION ROOM, TE PURU
COMMUNITY CENTRE,
954 WHITFORD-MARAETAI ROAD
WWW.BEACHLANDSCC.COM OR
PH: 09 536 6753
CHILDREN'S LITURGY AND
SACRAMENTAL PROGRAMME
ALL WELCOME

PRIMA
COLLISION REPAIRS

Complete panelbeating and car painting

East Tamaki: Unit B 154 Harris Rd, East Tamaki, Auckland 09 274 4778
Manukau: 2/117 Kerrs Rd, Manukau, Auckland 09 268 9340

Anger at council process expressed at WECS public meeting

Local residents and developers alike expressed strong sentiments about the future of local waterways at a public meeting organised by the Whitford Estuaries Conservation Society (WECS) on 4 February.

About 70 people attended the public meeting held in the Whitford Hall, including local residents, Ngāi Tai ki Tāmaki representatives, barrister Peter Fuller, past Auckland Regional Council chair Gwen Bull, Howick Ratepayers Association representatives and members of the Shelly Park Boating Club.

First to address the meeting was WECS chair Graham Paterson, who said that the society had been revived, with the addition of four new committee members, to address the current issues faces by the estuaries - notably Auckland Council's decision to approve a variation to Whitford Manor Estate's resource consent without public notification.

The consent variation means that treated wastewater can now be discharged directly into the Turanga River, rather than to a water treatment plant at the Whitford Park Golf Club, as had been originally

proposed. The Whitford Park Golf Club solution would have seen treated effluent discharged onto land and reticulated ponds, before filtering to the estuary.

Barrister Peter Fuller stressed to the audience that WECS is not anti-development, but that it has concerns about the processed followed by council - particularly the lack of consultation with local iwi, and the non-notification which denied local residents the chance to have their say.

Peter explained that the next option open to WECS is to file a judicial review in the High Court.

Whitford Manor developer Kevin Murphy was present at the meeting, and disputed the claims made by WECS, but

did not respond to Ngāi Tai ki Tāmaki representative Zaelene Maxwell-Butler's assertion that there had been no engagement with local iwi with respect to the resource consent variation.

Candor 3 director and engineer John Gardiner, who was involved in the development, said council process had been robust.

Graham Paterson asked attendees whether they thought WECS should challenge council's decision to allow the development to discharge wastewater into the estuary. A large majority agreed that a legal challenge should be mounted.

WECS say that filing a judicial review will require the Whitford and wider community to get behind WECS.



About 70 people attended the recent Whitford Estuaries Conservation Society meeting to discuss potential forthcoming legal action against Auckland Council.

Anyone wishing to support the future health of Whitford's estuaries can join WECS, make one-off donations or make ongoing contributions - further details are on the WECS website, www.whitford-estuary.org.

O'SHEA PODIATRY

Corns, callus, ingrown toenails, toenail surgery, diabetes assessment, orthotics, lower back issue, gait analysis, plantar fasciitis, Achilles tendonitis, painful sore feet, hip/knee pain, flat feet. Severs disease.

Every Thursday.
Call for your appointment today on
292 9334 or info@ibod.co.nz

O'Shea Podiatry, Located at IBOD
9 Papakura-Clevedon Rd, Clevedon

DIRTY CAR? NO WATER?



OPEN 7 Days, 24 HOURS

Credit Card and Paywave available!

347 Ti Rakau Drive, Botany Downs

Next to Animates Pet Centre, opposite Howick & Eastern Buses

LAND SURVEYORS

Hollier Greig Ltd

LAND SURVEYORS & LAND DEVELOPMENT CONSULTANTS

A member of the D.N. Book Consultants Group

When considering:
• Subdivision of Rural, Residential and Commercial land
• Redefinition of boundaries for building or fencing
• Engineering and topographical surveys

PH: JOHN GREIG 292-8745
McNICOL RD, CLEVEDON



• Devon McDonald

Legal issues? Need to find the right lawyer to help you?

I am Devon McDonald of the law firm **Swayne McDonald**. Our legal team of six lawyers and registered legal executives has more than 140 combined years of legal practice experience.

We can help you in a wide range of legal matters – including conveyancing, relationship property, small businesses, leases, wills, estates and family trusts.

Call us for an initial relaxed and confidential chat about your legal needs.

We'll have the right lawyer to help you.

Branch office conveniently located at:
Botany Junction, corner Ormiston Road
& Te Irirangi Drive. Phone 265 2700.

Swayne McDonald
LAWYERS

Visit us at: www.smlaw.co.nz

BARFOOT THOMPSON & Student Voice

LOCAL STUDENTS' NEWS, VIEWS & LITERARY TALENT

This column features news, views and literary talents of students from Beachlands, Maraetai, Clevedon, Brookby, Hunua, Paparimu, Orere and Ardmere Schools.

One student featured each week will be selected to receive a \$20 book voucher, thanks to Barfoot & Thompson's Beachlands and Whitford branches.

Sitting in the bleachers, near the end of the Kauri team prizegiving, I could feel the immense stare from the parents sitting in the audience waiting in anticipation to see if their child's name was going to be called out. The suspense was killing me. Endless thoughts were running through my head. "Was my application speech good enough?". "Had I expressed my ideas across to everyone properly?".

The first two leaders from my house were already announced. I felt nervous. Was my name going to be called out? Was it going to be me next? The hall felt like it was getting hotter the longer I waited. A good vibe was in the room and everyone was excited and eager to know the next name to be called.

Suddenly my name got called out. ... The crowd went crazy- clapping, whistling and yelling my name. I could see my parents in the back looking excited and proud. As I walked up and received my green house leader badge for Takitimu, all eyes were on me and my heart was racing. I looked back at my seat and I could see my friend Nadine looking almost as excited as I was. While the rest of the house leaders were announced, a grin stayed fixed on my face as well as on a lot of others faces as we all congratulated each other.

As I was preparing myself to walk out of the prizegiving with the other leaders, Mr Noble Campbell continued talking. He held up a beautiful new korowai (traditional Maori cape) made of blue feathers and explained that it represented the meaning of leadership, honour and identity. He announced that he would be presenting the korowai to one of the new house leaders who had all these values. I didn't believe for a moment that my name had been called a second time. I was so surprised and overwhelmed with excitement as Mr Noble Campbell and Whaea Huhana laid the cape on me. The room echoed with the sound of continuous clapping and cheering. Never had I felt such a proud moment.

- by Charli Taituha 2020 Takitimu House Leader, Beachlands School



Weber Family Q
Premium
(Q3200LP)

weber

NOW \$1019

Weber Spirit II
310 LP

weber

NOW \$1149

Weber 57cm
MasterTouch Plus
Kettle with
GBS BBQ System

weber

NOW \$699

Weber Genesis II
E455 LP

weber

NOW \$2499

STIHL SHOP™ Botany
16 Bishop Dunn Place
Botany

PH 271 3000
www.stihlshopbotany.co.nz
OPEN 7 days

STIHL SHOP

Facebook poll result shows residents still prefer rainwater

Tank water or mains water?

That was the question the *PC Times* put to the community last week in a Facebook poll, which attracted almost 1200 votes.

The sweet, sweet taste of rainwater was the winner on the day, though opinions were fairly closely divided.

Forty-five per cent of voters said they would like to see Beachlands/Maraetai/Whitford connected to city mains water, while fifty-five per cent of voters said they are happy to stick with their tank water supply.

Perhaps a third option should have been 'site a filling station closer to the coast', as that is what many people said they believed would help ease the current water crisis while still allowing residents to remain on rainwater supply.

The *PC Times* will pass the survey results to Auckland Council, to help inform any future decision-making about whether to connect the Pohutukawa Coast to town water supply.

Meanwhile the record-breaking drought continues, putting further pressure on waiting times for water delivery.

Te Puru Community Centre has worked with council to help the community out. Over two weekends more than 170 people visited the centre to use the showers and access potable and non-potable water.

On Monday councillor Bill Cashmore organised large milk tankers filled with water to be sited on the far side of Te Puru Park. Each of the large milk tankers con-

Would you prefer Whitford/Beachlands/Maraetai to be connected by pipeline to Auckland's water supply?



Results of the *PC Times* Facebook poll which asked if residents would like to be connected to Auckland's town water supply.

tains enough water to fill about four water tankers, thus reducing local water carrier operators' travel times and wait lists.

Fire risk increases

A total fire ban has been implemented in Auckland.

Hunua volunteer fire brigade station officer Aaron White says their station has attended a higher than normal amount of vegetation fires since the new year, with causes ranging from arcing power lines to grass fires caused by mowers hitting rocks. The brigade has also received

a mixture of emergency response calls that include motor vehicle accidents and medical incidents.

Aaron urges people to be very careful when using machinery during dry conditions. "Fires can start from the smallest spark. Ensure you have a suitable fire extinguisher on all vehicles."

Fire and Emergency New Zealand suggests using any machinery that could spark, such as lawnmowers, welding, or even a plough, in the morning or evenings - during the cooler parts of the day.

Aaron says: "We encourage everyone to go to checkitsalright.nz to find out the

exact restrictions and fire season for their address. This is the preferred method of checking local restrictions as opposed to calling your local council."

It is also important that the brigade has adequate access to properties, clear of overhanging trees. "To ensure we have sufficient access, make sure your driveway is at least 4 x 4 meters. The longer it takes us to get our equipment to your house, the longer it will take to put out the fire," says Aaron.

If you see a fire, you should call 111 immediately with details of location, size, fuel burning and any access issues.

We are here to help and support

Our approach, philosophy and high standards are ideals we are proud to uphold. Our compassion, values and dedication when caring for the bereaved are just a few of the qualities that form the heart of Resthaven Funerals.

HOWICK. Cnr Picton & Walter MacDonald Sts | Ph. 533 7493
MANUREWA. 88 Great South Rd | Ph. 267 2530

www.resthavenfunerals.co.nz

EASTERN MARINE
ENGINEERING SERVICES

- ▶ ENGINES
- ▶ PARTS & ACCESSORIES
- ▶ PROPELLERS
- ▶ SERVICE & REPAIR

4 REASONS TO CHOOSE MERCURY

- 15-115HP 400RSTROKE
- BEST IN CLASS PERFORMANCE
- SAVE \$5770H
- LOWEST WEIGHT & COMPACT
- QUICK RESPONSE

Unit 4/A, 190 Jack Lachlan Drive
 Beachlands, Pine Harbour Marina
 09 536 6252 • easternmarine.co.nz
info@easternmarine.co.nz

Love the Theatre?

Why not grab a bargain and buy a 2020 Showcard for 5 plays for just \$115*. Plus receive preferential booking entitlements and pay no booking fees. Buy online at hlt.nz or call 534-1401 for more information.

Showcard brochures are also available from the theatre.

*Standard ticket prices are: Adult \$29, Concession \$26.

COMING SOON TO HOWICK LITTLE THEATRE

Stag & Doe

Here come the brides

A COMEDY BY MARK CRAWFORD
 DIRECTED BY JAKE LA JEUNESSE
 SEASON: FEB 29 TO MAR 21

HOWICK LITTLE THEATRE | [WEB HLT.NZ](http://WEB.HLT.NZ) | PHONE 534 1401 | EMAIL INFO@HLT.ORG.NZ | BOOK ONLINE ITICKET.CO.NZ

Fletcher Living
Love your new home



“Very friendly and hugely supportive staff who helped us choose the right home. Fletcher Living builds very high quality homes with high quality chattels. Excellent before and after sales service. We are very happy with our house purchase.”
- Mr Singh

Beachlands

Three bedroom homes coming soon

We’re excited to bring a brand new design to the Beachlands market. Currently under construction, these single level duplex and stand alone designs feature open plan living, three bedrooms and private outdoor entertaining areas.

Interested in viewing floor plans and finding out more? Come and visit our showhome today at 1 Cadwil Drive, Beachlands, or contact our sales team direct.

Contact us today:

Jan Anderson
027 527 7363
Ann Harray
027 405 2145



More four bedroom designs available for sale now

Just sold! Visit our showhome to view more four bedroom homes available for sale

The stylish brick and weatherboard home photographed above has now sold! Situated on a beautiful site, this design proved popular with our customers. We’re currently selling out of our four bedroom homes as soon as they’re completed and released for sale - so if you’re in market to buy, make sure you come and visit us today to find out more about our new three and four bedroom home designs coming soon.

- Most of our four bedroom homes feature:
- Open plan dining, family and kitchen with separate formal lounge
 - Designer kitchen with island-bench, scullery and quality Fisher & Paykel appliances
 - Four spacious bedrooms separated by the living through the courtyard
 - Seamless indoor-outdoor flow to private patio, landscaped garden and backyard
 - Heat pump and security alarm system installed
 - Complete with a 10 Year Master Build Guarantee

This home sold for \$1,199,000

Showhome 1 Cadwil Drive, off Shelly Bay Road, Beachlands
Open 7 days 10am-5pm
Contact Jan Anderson, 027 527 7363

Bush custodians say they are leaving reserve in good hands

After almost two decades caring for “Maraetai’s best-kept secret” John and Anna Rugis are on the move, but they are confident others will carry on their legacy.

Throughout the years they have lived at their Rewa Road home, the couple have been instrumental in restoring the health of the 12-hectare bush block named after the long-serving Beachlands GP who used to own the land before gifting it to Auckland Council.

John, a University of Auckland scientist who originally hails from the USA, says he took time to learn about New Zealand’s plants and animals, and has used his neighbouring bush reserve as something of a science lesson.

The more he learned, the more he realised just how special the reserve was. “I view native plants and animals as a national treasure. The reserve has over 35 different species of native ferns, and 30 different species of native trees. There are 32 kauri trees with diameter greater than one-third of a metre, and a few that are over one metre wide,” says John.

“The reserve also contains one of Auckland’s few remaining fresh water wetlands. Wetlands are like the liver of the bush; they keep the ecosystem healthy. That spread of mini ecosystems within a single site is unusual, so this is a really unique reserve.”

John and Anna started the ‘Friends of Adah Platts-Mills Reserve’ (known as ‘The Friends’) in 2006, and with a committed group of volunteers they dealt to

weeds and pests within the reserve.

Thanks to John personally, hundreds of rats and possums no longer reside in the bush.

They’ve removed bungalow palms, loquats, and tree and bush privet, though Anna says dealing to weeds is an ongoing task that will never be complete.

Volunteers have hauled “loads” of tyres, car parts and other rubbish from the bush.

And kauri dieback has been at the forefront of their more recent efforts, with The Friends working with council to divert people away from kauri within the reserve. “Every single kauri they have found with dieback has been found within 50m of a walking track,” says Anna. “The disease is a water-mould that transfers via mud, so we’re working with council to build a boardwalk so people and dogs can keep their feet dry. It’s so important for people to keep their dogs on leashes and away from the kauri.”

It has been countless hours of hard work, but Anna says she wouldn’t have it any other way. “It’s benefitted my health, big time. Being able to go there on my own amongst the peace and sanctuary of the place, the big trees and the flowing water. I like lurking in the undergrowth with my face close to the soil - it feels like the air is clearer down there.”

The pair say Auckland Council has helped them in their efforts. “The city is really stretched, so if you put up your hand to do something like this, they are really supportive,” says Anna. “We have had



John and Anna Rugis pictured in the native bush area at their Rewa Road home.

great support from our local park ranger, Kara Goddard, and council contractors are doing a good job of helping volunteers keep invasive weeds under control.”

Over the past few years, volunteer efforts have been stretched. “People moved away or died, and our numbers had really dwindled,” says John.

“But then at the last minute, I found a fantastic group of people,” says Anna. “They’re young and enthusiastic. I’m chuffed - I can move on without looking back. These are people who will carry on, and even expand, the work we have done.

They can never have enough help though.”

John says he encourages locals to learn what is in the reserve. “New Zealand had 65-million years of isolation, and has a unique and delicate system. It’s seriously under threat by invasive plants and animals. Conservation begins in your back yard - if you can plant just one native in your back yard, that helps. Even just learning to identify five types of trees can make walking in the bush so much more enjoyable.”

continues next page

Save your tank water

Treat your car to a supremo clean at TJs!

NZ's MOST ADVANCED CARWASH MACHINE

- Four jointed vertical brushes contour to the shape of your car producing a superior wash result
- New Zealand’s first Sensofit Plus brush material produces high quality wash result.
- Pre blast removes abrasive material eliminating the risk of surface damage.
- New Zealand’s first Contour directional drying delivers a result like you have never seen before

• Plus Self Service Bays, Vacuums & Fragrance

Great value - great result

FROM

\$14

PH: 274 1417
347 Ti Rakau Drive, East Tamaki

OPEN 7 Days
24 HOURS

Opposite Howick & Eastern Buses
and next to Animates Pet Centre

continued from previous page

While John and Anna are sad to farewell both the reserve and their Rewa Road home with its freshwater stream (home to freshwater mussels, fish and eels), they say that their passion for environmental restoration will continue at a bush block near their new home in West Auckland.

"The Platts-Mills Reserve is looking pretty good now. We've left it better than we found it," says Anna.

"But new developments are putting stress on the reserve, so the conservation effort needs to be ongoing. I'd just like people to know that the reserve needs them. It needs them to care, and enjoy. These places restore people's hearts and love of nature. Partake of that."

To join the Friends of Adah Platts-Mills Reserve, contact John Stacey, email jstacey@eqs.co.nz.

Find out more about Maraetai's Adah Platts-Mills Reserve

A public meeting, including a presentation about the reserve, will be held at Maraetai's Rowan Muir Community Centre, 211 Maraetai Drive, on Tuesday 25 February from 7-8pm.

This is an opportunity learn about the unique features of the reserve, what work has been done to date, and what is planned for the future.

All welcome to attend.

NZ Polo Open returns to Clevedon this weekend

The nation's most prestigious polo event returns to Clevedon this weekend, offering guests the thrill of competitive international polo, fashion, style and hospitality.

Six teams will compete for the prestigious BMW NZ Polo Open title with professional players here especially for the event from Australia, Argentina and England.

Amongst other polo stars the captain of the English polo team James Harper will take the field for South Island sponsored team, Glenmark, while his son Will Harper will take the field for Mystery Creek alongside New Zealand's best polo player John-Paul Clarkin (defending NZ Polo Open winner) with his team mates Kit Brooks and Clevedon young gun Ethan Wade.

Cheering on from the side-lines for Mystery Creek will be Nina Clarkin, John-Paul's wife who is the world's highest rated female polo player. Nina was part of the 2019 winning Mystery Creek polo team, and is this year pregnant with the couple's third child.

New to the tournament this year is the only female entrant, Ellen Morgenstern, who teamed with BMW NZ Polo Open star Glenn Sheriff to win New Zealand's oldest sporting trophy - the Savile Cup - last month in Hawkes Bay. Both the Savile Cup and the NZ Polo Open are regarded internationally as two of the best in polo trophies to win.

"The BMW NZ Polo Open is looking



There will be plenty of action both on and off the field at this Saturday's Polo Open.

to be the most exciting polo tournament we have ever held in New Zealand," says Lucy Ainsley, Executive Director of the BMW NZ Polo Open.

Fashion on the Field this year, with all entries welcome, will be a twist of effervescence, with judges Robert Niwa of Crane Brothers, Kellie Taylor of Moochi and Wihelmina Shrimpton of Media-works, all looking for their take on polo style.

There's plenty of entertainment to be found off the field, with the 'Glenmorangie experience', and a chance to have brows and lashes done at the MCoBeauty Bar. Sero and George FM will both be there encouraging Instagram-worthy moments

and the polo village has an array of things to see.

George FM will host their infamous afterparty on the Chukka Lawn and for music fans attending Six60 there will be a bus from the polo grounds to Western Springs.

"Polo is a great sport and I just want everyone to be able to come and have a fantastic day out and enjoy the surroundings and everything the event has to showcase," says Lucy.

Gates open at 10.30am. Tickets available from www.iticket.co.nz/events/2020/feb/nz-polo-open

WATER CARRIER COMPANIES

FOR SALE

Coastal Water
Beachlands Maraetai Water
Whitford Water • Clevedon Water

Interested in all or part of these local water carrier companies?
Please contact by email (in confidence): thewtrman@xtra.co.nz

Health & Lifestyle

Take time to focus on YOU

- Jack Holmes, Perform Fitness

Hello, my name is Jack and welcome to a chat about health and wellbeing. For me the year is moving at an express rate. I've enjoyed time off at Christmas and now I'm back to work at full speed, which is great! There's a lot to do, to look forward to and planning to be done. 2020 is touted to be the best year yet, don't you know.

The quickness and ease of plugging back into the world after the big summer break is remarkable. Of course some people worked through and some people don't work, but regardless almost everyone seems to be busily getting on with being busy.

This has prompted me to plant the seed in this month's chat around the cycles of our own life. Naturally we have day and night that we create routine around, and this progresses through to weekly, monthly, seasonally and yearly cycles.

We also have cycles around our eating habits, exercise habits, socialising, work and even our body has its own cycles that create its state of balance.

As it happens we live in a world that

prioritises our focus on the outside world – what am I going to buy, what am I going to do, who am I going to do it with? Without conscious thought, we may just find that we knuckle down to business and the next thing we know we're at Christmas again.

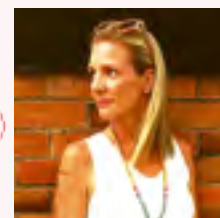
I feel it's important to create time in the cycle of a year where we become introspective about ourselves, and this may include taking steps with a doctor or health professional to ascertain how well our body is functioning.

Too often I hear that it took someone until they were very unwell to "find out what's wrong", only to learn that for a long time they had been deficient in nutrients, their glands and hormones were out of sync and their body was operating poorly.

My suggestion is to create time at least yearly where you really focus on you, get help if required and it would be a great idea to spend a month or two actively supporting the area of you that you find is lacking.

Let's look after ourselves and each other, Pohutukawa Coast.

Accessories to complete your look



M. 021 245 7626

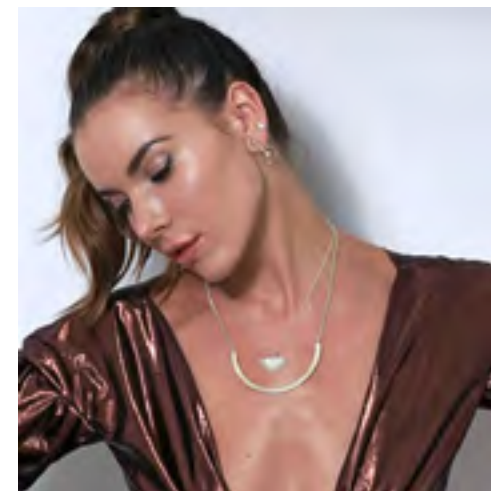
E. kelliewalkerstylist@gmail.com

[facebook.com/kelliewalker.personalstylist](https://www.facebook.com/kelliewalker.personalstylist)

[kelliewalker.personalstylist](https://www.kelliewalker.personalstylist)

I do love a good costume jewel to add a colour pop or statement to any outfit but what I'm really loving is that there are so many stunning gold or silver looks which are modern but still timeless. Adding style without having to think about whether the colour will pair with the outfit. It makes dressing so much easier.

Layering is a beautiful way to create



Layered chains Zoe and Morgan (available at Walker and Hall).

a statement without looking like you've tried too hard. Layer classic contemporary pieces to create a beautiful effortless style that can be changed up to create a new look. The key to layering success when wearing chains is to layer smaller pieces at the shortest length to largest pieces on the longest length. Wearing different lengths will make each piece visual and keep them separated to avoid any tangles. You can add interest with pendants or bars etc.

Rings and bangles can also be stacked to create a modern statement or you can wear multiple rings on multiple fingers. The key to keeping the look a little more sophisticated is to stick to finer jewellery.

In my early twenties, I spent my summers shopping around some of the most beautiful jewellery stores in the Greek Islands. I then had my own jewellery designed here in New Zealand, so I appreciate the time that goes into a fine piece. I particularly love pieces inspired by places around the world which reflect my time abroad and my love of travel.

I think it's a little more individual and says something about your own style and life too. I definitely look forward to purchasing pieces for my own daughters to treasure for years to come. There are so many beautiful pieces out there that I thought I'd pick out some of my favourites for you too for inspiration. Happy accessorising!



From top: Zoe and Morgan Xanadu necklace; Zoe and Morgan stacker rings; Golden Rose wide cuff bracelet; Karen Walker oak leaf cuff. All from Walker and Hall.

Left: Meadowlark Talisman pendant
Right: Boh Runga shaped pendant
- both from Walker and Hall.

always available to
new GYM members

7 DAYS FREE TRIAL

* Spread the word!

* Terms & Conditions apply.

**PERFORM
FITNESS**

Call us **TODAY** Ph **5367231**

110 Jack Lachlan Drive • BEACHLANDS • info@performfitness.co.nz

Health & Lifestyle

Ormiston Hospital to host community open day in March

- by the Ormiston Hospital team

Have you always wanted to go behind the scenes of an operating theatre and see what it's like to use 3D operating equipment? Well, now you can at Ormiston Hospital's open day, on Saturday 28 March. The hospital will open its doors to the public from 10am – 3pm to provide the community with an opportunity to explore the only private hospital in south east Auckland.

Two of Ormiston Hospital's operating theatres will be open, showcasing their technology and modern facilities. Visitors can also join a private tour of the hospital and go on the journey of a patient to experience first-hand the caring and friendly environment at Ormiston Hospital.

Nurses and staff will be available during the day to answer questions and perform wellness checks offered

as part of the tour. You can also expect to meet with specialists and surgeons, who will be available to discuss their specialty areas. Ormiston Specialist Centre, located on the ground floor will be open for tours, and visitors can view the comprehensive specialist services offered onsite.

Ormiston Hospital was opened in 2009 and has been a pillar in the Ormiston community providing an excellent standard of healthcare closer to home. The last open day was held in 2014 and saw a great number of visitors. Ormiston Hospital prides itself on delivering a

high standard of excellence in private healthcare that its patients describe as a "five-star hotel."

"We are passionate about what we do and see this as an opportunity to invite the public in to see that for themselves," explains Ormiston Hospital's chief executive officer, Vivian Blake.

Ormiston Hospital is located at 125 Ormiston Road, Flat Bush in Auckland - for further information please visit their website: www.ormistonhospital.co.nz/openday. The event is open to all ages, parking onsite is free and the hospital is accessibility friendly.



Seventy five-star reviews for Smile Dental Beachlands!

- by Dr Jacky Lam, Smile Dental

Happy New Year from Smile Dental!

Firstly, thank you for your support of our newest Smile Dental clinic in Beachlands.

Your 70 five-star google reviews tells us we are doing the right thing for our local community!

Due to high demand, we now have three dentists working in Beachlands - Dr Ian, Dr Sam and Dr Anastasia - providing a 7-day service.

In addition to regular check ups and hygiene services, we offer accident and emergency treatment, dentures, dental implants and state-of-the-art Invisalign orthodontic treatment.

We provide free adolescent dental care for school children from 13-17 years, and offer a 15 per cent discount for seniors aged over 65.

Come and say Hi, and check out our clinic! We look forward to serving you with professionalism and care.

Ormiston Hospital
Open day
Saturday 28 March
10am to 3pm

FREE EVENT
 open to all!

Explore behind the scenes and meet our staff!

Visit our website for more information:
www.ormistonhospital.co.nz/openday

125 Ormiston Road, Flat Bush, Auckland | Ph: 0800 467 647

smile dental
 giving you one more reason to smile

smile dental Beachlands
OPEN 7 days

Q Card & GEM Visa
 With 12 months interest free*.
 (*conditions apply)

NEW PATIENTS WELCOME
QUALITY AFFORDABLE FAMILY DENTISTRY

Smile Dental is New Zealand's largest dentist owned dental group with 17 modern innovative clinics in Auckland and Palmerston North.

Free Exam*	Free ACC & Social Welfare Quotations	
Free Adolescent Dental Care	Scaling & Polishing	
White Fillings	Root Canal Treatment	Extraction
Wisdom Tooth Surgery	Crowns	Veneers
Dentures	Bridges	Dental Implants
Invisalign	Botox & Dermal Filler	

Address:
 129 Beachlands Road,
 Beachlands,
 Auckland

NEW PATIENT SPECIAL
ONLY \$199

Examination, clean, 2 intra oral X-rays, panoramic X-ray

Mention this advert to receive your discount

www.smiledental.co.nz 09 302 0808

* excl. X-Rays

| Albany | CBD | Henderson | Avondale | Te Atatu | Ranui | Remuera | Onehunga | Sylvia Park | Mangere |
 | East Tamaki | Somerville | Beachlands | Manukau | Takanini | Papakura | Palmerston North |

Health & Lifestyle

Let health and wellbeing be part of your 2020 vision

- Dean Cruise, Club Manager, ALLFIT Beachlands

After a long hot summer catching up with friends, socialising and enjoying the great weather most of us have returned from our holidays and are now back to work.

"Back to reality" is a phrase I frequently hear and often used in a less than positive manner. But that needn't be the case as your current reality doesn't have to be the same as your future reality.

If health and wellbeing is part of your 2020 vision then why not let the team at ALLFIT help you with your new future?

At ALLFIT, we have the toughest trainers on the Pohutukawa Coast whose primary goal is to improve the health and

wellbeing of our community. As well as a team of highly trained personal trainers we have an array of specialist group exercise instructors for our boxing, yoga, pilates, and spin classes.

One of our members Sarah Hodges decided she wanted a different future for herself and put her trust in the team at ALLFIT.

Sarah has been a member for two years now and enlisted the help of our personal trainers to help her achieve her goals. Sarah has been working exclusively with our personal trainer Joel for most of her time at ALLFIT and has achieved some incredible results.

To date Sarah has lost a staggering 66kg and is regularly in the gym attending one of her personal training sessions or pushing herself through one of her own demanding routines.

"I've been working with Joel for almost two years now and I couldn't be happier with the support and encouragement he has given me during this time.

"Each session with Joel is so varied and he will always stretch my boundaries with a mixture of cardio, strength



Sarah Hodges has lost 66kg since starting her journey with the ALLFIT team.



and resistance training. The support I have received from Joel and the rest of the team at ALLFIT has been unconditional from the beginning of my journey to every time I walk through the door. The team at ALLFIT are so friendly, and always happy to help me in any way possible. The support is ongoing and it feels like I'm part of an extended family."

Becoming a healthier version of you starts today!

So, don't delay, get moving! At ALLFIT we offer fitness solutions to suit all the community. Come and join the ALLFIT family today...all day, your way.

EAST AUCKLAND OSTEOPATHY P: 09 533 0010

Heather Nicholls
• Registered Osteopath
• ACC Provider

NOW LOCATED AT
The Greenhill Clinic, 253 Pakuranga Rd
www.east-auckland-osteopathy.co.nz

MAKE ALLFIT YOUR 2020 VISION

JOIN NOW AND GET \$5 OFF WEEKLY MEMBERSHIP FOR 6 MONTHS

FIRST 50 MEMBERS ONLY

WWW.ALLFIT.CO.NZ

*TERMS AND CONDITIONS APPLY, VALID FOR 12 MONTH MEMBERSHIPS ONLY.



POHUTUKAWA COAST SHOPPING CENTRE, BEACHLANDS
WEB: ALLFIT.CO.NZ TEL: 0800 ALLFIT (255348) EMAIL: BEACHLANDS@ALLFIT.CO.NZ

Playing with fire: Maraetai Beach Boat Club hosts Meatstock

In 'braise-'n' defiance of a global shift towards eating less meat, the Maraetai Beach Boat Club will host its own version of Meatstock on 29 February.

Anyone with a passion for succulent ribs, bangin' brisket or wicked wings is welcome to bring along their weapon of heat and pit their skills against others in a great family day out.

Organiser Ian Twist says last year's event saw no fewer than 15 different types of cookers being tended to on the boat club deck.

"There were smokers, barbeques, slow-cookers - some people started cooking their meat cuts as early as 9am," says Ian, whose personal preference is to cook his meat in a wine barrel.

Come serving time in the early evening, all the meat is put on a table to share.

Cooks should bring their own cooker to the club, and prepare enough meat to feed their family and a few friends.

You don't have to be a pit-master to enjoy the spoils - anyone is welcome to come along and take part in the tasting. Non-members of the boat club should call Ian on 027 231 4752 to register, as non-members must be signed in as guests on the day.

Ian says the day is all about celebrating the definition of a club. "A club is a bunch of like-minded people getting together to share ideas. Meatstock is about talking, cooking and sharing ideas - just as you would in your own backyard."



Kings of the 'que will gather at Maraetai Beach Boat Club on 29 February.

Win tickets to Howick Little Theatre's latest production

- by *Howick Little Theatre*

Howick Little Theatre's first play for 2020 offers a highly entertaining and hilarious look at small-town weddings "gone wrong".

Bonnie and Brad are hosting a "Stag & Doe" fundraiser event to help pay for their wedding. It sounds great fun, but when they agree to share the local hall with another couple whose wedding tent has blown away in a storm, it doesn't quite pan out as expected.

Their wedding expenses are out of control, their wise-cracking bridesmaid still holds a candle for the groom who left her

at the altar seven years earlier, and the catering staff are nowhere to be found.

Despite all this, strained and newfound relationships emerge, past relationships are examined, current couples are put to the test and new romance blossoms.

Wildly funny and unexpectedly touching, this play offers a look at the rural Canadian prenuptial tradition...and shines a light on the nature of love, marriage, and weddings.

What: 'STAG & DOE' - a bridezilla comedy by Mark Crawford

Directed by: Jake la Jeunesse

Where: Howick Little Theatre, 1 Sir

Lloyd Drive, Pakuranga

Season: Feb 29-March 21 (Wed to Sat, 8pm), with 2pm matinees on March 1 and 8

Website: www.hlt.nz

Bookings: <https://www.iticket.co.nz/events/2020/feb/stag-and-doe>

The *PC Times* has two double passes to give away to STAG AND DOE. Email your name and contact details to info@pctimes.co.nz by 5pm, Thursday 27 Feb, with 'Ticket Giveaway' in the subject line.

PROBIZ SYSTEMS LIMITED

- Accountant
- Tax Returns
- Business Advice
- Tax Planning
- Affordable individual service

sharon@probizsystems.co.nz

Sharon Bramley

WHITFORD BASED

Ph: 09 530 8036



42 Wakelin Road, Beachlands
Phone 536 4990
www.barfoot.co.nz

BARFOOT THOMPSON &
UNDISCOVERED REAL ESTATE



MARAETAI VIEWS

MAKE YOUR NEW BUILD DREAMS A REALITY

Set on the serene back slopes of Maraetai, with stunning elevated views over the surrounding countryside - we are delighted to announce the latest release of coveted coastal sections.

- Freehold sections priced from \$470,000 with lot sizes ranging between 600m² and 3,474m²
 - Titles are due early to mid 2020
 - Choose your home design, fixtures and materials

Sales Office located at 110 Maraetai School Rd, Maraetai | Open Sat/Sun 11am - 1pm or phone for a private appointment

Call now to secure the future site of your dream home at a price that is attainable.



Matthew Brown
027 549 4673
m.brown@barfoot.co.nz

Mike Deverell
021 466 300
m.deverell@barfoot.co.nz

BARFOOT THOMPSON &
PROJECTS



14 Artists Avenue, **Beachlands**



This contemporary piece, located in the aptly named Artists Avenue will be sure to release the creative genius in you. The current owners designed the home themselves to suit their extended family dynamic. With its expansive single level layout and convivial centralised living, it provides for fantastic open plan spaces without compromising each family members privacy. The entertainers kitchen and service facilities

are ample and well kitted out. The decor is modernist and neutral. Outside, the fully fenced site is begging for your own artistic flare - and with the inside already complete and in pristine order it really is something you can sink your teeth into in order to further enhance and beautify what is already a sought after creation. With the vendors mandate to sell quickly, this home will be a genius move...

For Sale
Expressions of Interest Closing
Thursday 12th March 2020
4:00pm

View
Sat / Sun 3:00 - 3:30pm

Brianne Bignell
021 400 979
brianne.bignell@raywhite.com

Elise Obern
021 182 5939
elise.obern@raywhite.com

rwbeachlands.co.nz/BCH21315
Lighthouse Real Estate Ltd Licensed (REAA 2008)

Foodie Guide

Who doesn't love a stuffed avocado?

INGREDIENTS

- 2 avocados
- 2 cans of tuna
- mayonnaise
- sweetcorn
- cucumber and/or capsicum pieces

1. Mix filling at a ratio 70% tinned tuna and 30% mayonnaise with raw sweetcorn kernels within the mix
2. Remove the stone, scoop out the centre and fill your avocado.
3. Top with cucumber & capsicum.



- by Jenny, foodbox.co.nz

THE FRANKLIN
TAPHOUSE & KITCHEN

Monday - Friday 12pm-late
Saturday & Sunday 10am - late
Brunch 10am-12pm on the weekends

Ph: 536 5978
Pohutukawa Coast Shopping Centre
www.thefranklinpub.co.nz

Foodbox.co.nz

Market fresh fruit and veg, premium restaurant quality meat and fish, and add on extras like milk, bread and eggs

- You choose
- You configure
- We deliver

Red Shed Palazzo
www.redshedpalazzo.co.nz

WEDDINGS, BIRTHDAYS
OR ANY SPECIAL OCCASIONS
Breakfast/Lunch - licensed
OPEN 7 DAYS 8.30AM-4.00PM
16 Jesmond Rd, Karaka
Ph: (09) 294 6687
E: eat@redshedpalazzo.co.nz

PH: 536 4659
Pepperjacks
kitchen bar
www.pepperjacks.co.nz

EARLY BIRD DINNER SPECIAL
LIMITED MAINS \$20
ORDER BETWEEN 5-6PM

Mon: Closed
Tues - Sun: 9am till late
(Breakfast /Lunch/Dinner)

190 Jack Lachlan Drive, Pine Harbour Marina, Beachlands

MELT
ESTD 2017

OPEN HOURS:
Mon/Tue 4.30-9.30pm
Wed-Sun 11.30am-9.30pm
1/44 Kauka Rd, Beachlands
(opposite Countdown)

Ph: 217 4917

Domino's

Open: Sun - Wed 11AM - 10PM
Thurs, Fri, Sat 11AM - 11PM
Ph: 0800 30 40 50 or 09 951 3959
www.dominos.co.nz
E: beachlandsdom@gmail.com

Blue Elephant
Innovative Authentic Thai Restaurant
@ The Clevedon Hotel, 26 Clevedon Kawakawa Road, Clevedon Ph: (09) 215 8651

Tues - Sunday from 5.30pm
Takeaways available for pick up
blueelephant.co.nz

Foreshore

Open 7 DAYS:
11.30am-2.30pm & 5pm-10pm
251 Maraetai Drive
Maraetai, Auckland
PH: 536 5023

Facebook @foreshore
Indian Restaurant & Bar



BEACHLANDS MEDICAL CENTRE

PH: 536 6006

Mon 8.00-7.30 **Tues** 8.00-5.30
Wed 8.00-5.30 **Thur** 8.00-5.30
Fri 8.00-5.30 **Sat** 9.00-12.30

**No late nights during school holidays
& closed statutory holidays**

**Book appointments online at
www.connectmed.co.nz**

Doctors:

Dr Nigel Brown
Dr Michael Clarke
Dr Stephen Kardos
Dr Holger Konrad
Dr Rowena Poole
Dr Nikola Retford
Dr Rebecca Starr
Dr Andrew Reid

**Other services: Psychiatrists, Counselling services,
General Surgeon & JP**



Pohutukawa Coast
PHARMACY

carepodia+ry

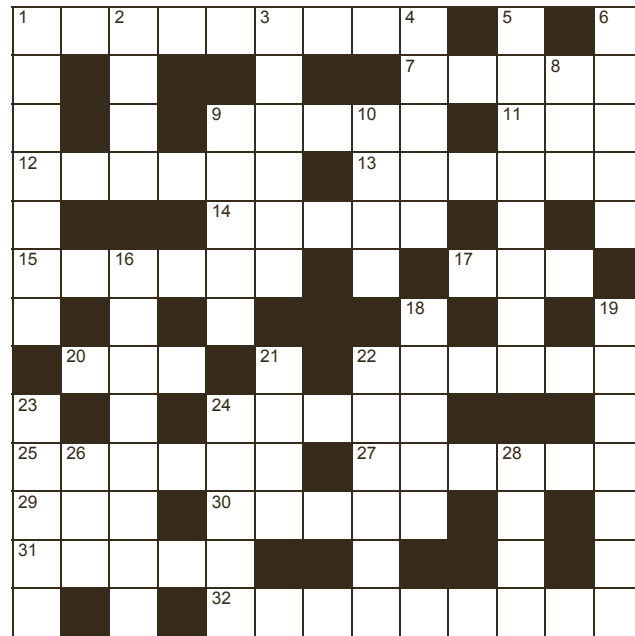


BEACHLANDS
PHYSIO



**129A Beachlands Road, Beachlands
POHUTUKAWA COAST SHOPPING CENTRE**

RAYWHITE BEACHLANDS CROSSWORD



Tracey Royal
021 400 297
rentals.beachlands@raywhite.com

RayWhite.

Across

1. Obsessive desire to set things alight (9)
7. Guitar-like instrument (5)
9. Farewell (fr) (5)
11. Pester (3)
12. Roll of parchment (6)
13. Make something certain (6)
14. Strained (5)
15. Named (6)
17. Some, or all (3)
20. Biblical vessel (3)
22. Prance around (6)
24. Dodge (5)
25. In operation (6)
27. Outburst of anger (6)
29. Food in a shell (3)
30. Motionless (5)
31. Triangular area (5)
32. Daily bulletin (9)

Down

1. Throb (7)
2. Raise (4)
3. Confused (6)
4. Treat badly (5)
5. Oblique remark (8)
6. Evil or mischievous spirit (5)
8. Glass container (3)
9. Change (5)
10. Alleviate (4)
16. Strangle (8)
18. Military trainee (5)
19. Entree (7)
21. Any number divisible by two (4)
22. Juicy segmented fruit (6)
23. Useful (5)
24. Bird-like (5)
26. Signal (3)
28. Quick look (4)

Answers on page 14

Community Calendar

Weekly events

Advertising in our Community Calendar is free. Activities must be not-for-profit and have a community focus. For listings, email info@pctimes.co.nz - include activity, day of week, time, venue and contact details.

FRIDAY

- **CITIZENS ADVICE BUREAU** 1-3pm. 1st and 3rd Fridays of the month at Beachlands Library. 2nd and 4th Fridays of the month at Maraetai Library. Ph Louise 09 576 8331. Free, confidential advice on a range of matters.
- **TE WAIROA NURSERY** Potting Bee, 9am-12pm. E: 2jodiem@gmail.com
- **CLEVEDON ART GROUP** McNicol Homestead 10am to 12noon. Free tuition available. New members very welcome. Marian 027 296 3827
- **SENIOR CIRCUIT:** 9am Te Puru Centre, \$5 Ph 536 5360.
- **HOBBY ART GROUP:** 10am-12pm, Beachlands Log Cabin. Ph: Anne 021 180 4595 or Barbara 021 055 7370.
- **COTTAGE CAFES** on first and third Fridays of each month 10am till 12pm – FREE great coffee and food, awesome company.
- **BeachUTH:** 7-10pm, Youth Group for years 9-13, Y7/8 6-7pm Beachlands Baptist Church. Ph: Lisa Leat 021 068 7300, E: lisa.leat@xtra.co.nz
- **CYG YOUTH GROUP** for years 9-13. 7.30-9.30pm, Clevedon Hall. Contact Fran 021 326 237 or fran@clevedonpresy.co.nz
- **KAWAKAWA ORERE YOUTH** Thursdays 6.30pm at Kawakawa Bay Hall – FREE for ages 10-18yrs. See Facebook for updates and info.

MONDAY

- **POHUTUKAWA COAST PLAYGROUP:** 9.30-11.30am, Beachlands Memorial Hall.
- **THE GOLDIES WALKING GROUP:** 8.45am, Pine Harbour Marina ferry base, or another local site. Ph: Chris Shirley 536 5106/027 498 7857.
- **SENIOR CIRCUIT:** 9am \$5 Te Puru Centre
- **CASUAL BADMINTON:** 7.30-9pm, Te Puru Centre, \$5. Ph: 536 5360
- **ST JOHNS YOUTH:** 6-7.30pm, St Hilda's Church, Wakelin Road.
- **CASUAL TABLE TENNIS:** 7.30-9pm. Te Puru, \$5
- **SOCIAL TENNIS:** Adults beginners/intermediate 7-9pm Te Puru. Linda 0211253964 maraetaitennisclub.co.nz.

TUESDAY

- **COASTAL PLAYGROUP** PC Presbyterian Church, 5 Jacobs Way, Maraetai. 9am-12pm. Bubs till 5 yrs. Ph Sarah 022 082 6432.
- **COFFEE & KIDS** 9.30 - 11am, Beachlands Baptist Church, playgroup, refreshments, home baking.
- **KOKAKO VOLUNTEER DAY:** 8.15am-3.30pm, Northern Hunua Ranges. Ph: Mags Ramsey 536 7012.
- **PRE-SCHOOL RUNNING RACES** from 6pm at Te Puru.
- **RUMMIKUB** 1pm - 4pm, Te Puru Centre \$2. Ph: Bernadette 021 170 9350.
- **MARAETAI (LAWN) BOWLING CLUB:** Cnr Te Pene Road. Roll ups Tuesday, Thursday, Saturday. 1pm. Enquiries. Ph Derek 536 4626

- **CASUAL BADMINTON:** 9.30-10.30am, Te Puru Centre, FREE.
- **BASKETBALL:** All ages, Te Puru Centre. Email pcbasketballclub@gmail.com. Ph: 027 775 5320.
- **MEN'S AND INTERMEDIATE/ADVANCED LADIES TENNIS:** Te Puru. 7pm to 9pm. Contact Stephen 021 217 7587
- **HOUSIE/BINGO** Beachlands Charter Club, 7.30pm, \$15.
- **THE POHUTUKAWA COAST CHOIR:** 7-9pm, Presbyterian Church, 5 Jacobs Way, Maraetai. Ph: Sue 022 415 6897.

WEDNESDAY

- **COASTAL MAINLY MUSIC** PC Presbyterian Church, 5 Jacobs Way, Maraetai. 9am-12pm. Bubs till 5 yrs. Ph Sarah 022 082 6432.
- **SENIOR CIRCUIT:** 9am \$5 Te Puru Centre First Wednesday of the month BYO plate for coffee after.
- **SENIOR SPORTS:** 10am-12pm, Te Puru Centre. All welcome. FREE
- **THE GOLDIES GYM GROUP:** 1-2pm, Perform Fitness Gym, Formosa Sports Centre. Ph: Chris Shirley 536 5106 or 536 7231
- **PEST CONTROL DAY:** Southern Hunua Ranges, Ph: Mags 536 7012, E: mags.ramsey@aucklandcouncil.govt.nz
- **MANUKAU MASTERS SWIMMING CLUB:** Wed & Sat, carpooling from Beachlands Maraetai: contact president@manukaumasters.co.nz
- **"CREATIVE WINGS" ART FOR THE SENIORS:** St Hilda's Church, 3 Wakelin Road, Beachlands 10am-12pm. Call 536 6124 if you would like transport.
- **NATTER N STITCH** 12.30-4pm, Te Puru. Phone Diane 0274 756 526.
- **KAWAKAWA BAY PLAYING WITH MUSIC** 10.30am at The Cottage. Facebook: Kawakawa Bay Music or ph Rhiannon on 021 132 2412
- **KAWAKAWA BAY CRAFTERS** K Bay Hall, 10am-12pm. Ph 292 2666.

- **MANCAVE** 12.30-1.30pm. Shared luncheon for semi retired/retired men. BYO Lunch. Beachlands Baptist Ph 536 6360
- **GIRL GUIDES:** 6.30-8pm, Beachlands Memorial Hall
- **CLEVEDON FIRESIDE BRIDGE CLUB:** 10.15am, Anglican Church Hall, Clevedon. Lessons available. Ph: Pauline 299 7433 or Jill 530 8562.
- **MARAETAI BEACH INDOOR BOWLING CLUB:** 7pm, Maraetai Hall, Rewa Road. Ph Gae 536 6227 or 027 676 6473.
- **WRIGGLE & RHYME FOR 0-2 YEARS:** Every second week. Maraetai Rural Library or Beachlands Rural Library
- **HILLPARK SCOTTISH COUNTRY DANCE CLUB** 7.30-9.30pm, Hillpark School Hall, Grande Vue Road, Manurewa. Contact: Heather 09 267 6375; Les: 09 299 6668 or Glenis 2922 825
- **MAHJONG:** 10am-12pm, Te Puru, \$2
- **DANCE IN THE DARK** - Women only, 7-8pm Te Puru Scout Hall \$5 first time, \$10 thereafter. Contact dancenoireast@gmail.com or Facebook Dance Noir NZ

THURSDAY

- **MAINLY MUSIC.** Sessions at 9.30am and 10.45am. Beachlands Baptist. Morning tea served between the sessions. Ph 536 6360

Fortnightly, monthly & one-off events

OMANA STAMP CLUB

SECOND TUESDAY OF THE MONTH, 1.30pm at Maraetai Library. Ph David 530 8869 or Graham 536 6958.

ZONTA INTERNATIONAL

FIRST WEDNESDAY EACH MONTH - 6:30 - 9:30. Takanini. More Information Ph: Pauline Bowles 292 8022

JP SERVICE DESK

WEDNESDAYS, 5-6.30pm, at Beachlands Medical Centre, upstairs, Pohutukawa Coast Shopping Centre.

LET'S DO LUNCH

Free community lunch, **NEXT LUNCH 11 MAR.** 12.30pm Beachlands Hall. Ph: 536 6124.

POHUTUKAWA COAST TOASTMASTERS

7-9PM EVERY SECOND WEDNESDAY in the Beachlands School Staff Room. pohutukawa@toastmasters.org.nz or Craig 0272866751.

POHUTUKAWA COAST COMMUNITY ASSOCIATION (PCCA)

7.30PM THIRD WEDNESDAY OF EACH MONTH, Rowan Muir Community Centre, 211 Maraetai Drive.

POHUTUKAWA COAST ROTARY

SECOND AND FOURTH THURSDAY OF EACH MONTH, 6PM, Pepperjacks, Pine Harbour.

COTTAGE CAFE

FIRST AND THIRD FRIDAY EACH MONTH: 10am-12pm Kawakawa Bay Presbyterian Church. Ph: Jan Rouse on 292 2701.

BEACHLANDS/MARAETAI U3A

TUESDAYS: Third Tuesday of each month, 10-11.30am St Hilda's Hall, 3 Wakelin Rd. Interesting programme, morning tea. All welcome.

BM COUNTRY AND VARIETY MUSIC CLUB

Fortnightly on Thursdays, Maraetai Bowling Club. 7-9.30pm. All welcome. Contact: Paula 09 530 9141 or 021 059 2444.

POHUTUKAWA COAST COUNTRY & VARIETY MUSIC CLUB

Fortnightly on Saturdays, Whitford Hall. 1-4pm. All welcome. Contact: Paula 021 059 2444.

HUNUA TRAIL PUBLIC MEETING

14 MARCH FROM 11AM TO 2PM. Clevedon District Centre

- **SENIOR EXERCISE:** 9.15am. A gentle exercise program at McNicol Homestead. Contact Cath on 021 349 417
- **GENTLE EXERCISE FUN & FRIENDSHIP FOR SENIORS 65YRS+** \$5 per session 10am-12.30pm St Hilda's Church Hall, Chris 021 133 5283
- **TOY LIBRARY:** Thurs 10.00am-12.00pm, Sun 9am-10.00am. 59 Third View Ave. Beachlands. 021 492 325. Term time only.
- **LINE DANCING:** 10-11am, Memorial Hall, \$5. Ph: Karen 021 213 6020.
- **ADULT GYMNASTICS/FITNESS CLASS:** 11am-1pm FREE Te Puru

Local donates pet oxygen mask kit to brigade



Ian Scott donates a pet oxygen mask kit to Beachlands chief fire officer Shane Rutherford.

Pohutukawa Coast pets have been thrown a potential lifeline by local resident Ian Scott who has donated specialised resuscitation equipment for animals to the Beachlands Volunteer Fire Brigade.

The pet oxygen mask kit was developed in New Zealand to help our smaller, furry family members in cases of emergency.

The brigade undertook a training session provided by Pet Lives Matter which taught them how to use the gear and perform CPR on an animal.

Like humans who receive CPR and then go to hospital, animals who receive CPR then go straight into the care of their normal vet.

Beachlands Chief Fire Officer Shane Rutherford says the brigade attended an incident a few years ago where the kit might have been useful. "It was a kitchen fire, and in the laundry behind the kitchen were three puppies. One survived, but the other two died from smoke inhalation. Having the pet oxygen kit there may have made a difference."

The donation of the kit means that the Beachlands brigade can perform CPR and provide oxygen to pets in emergency situations. They will only use the equipment in the course of their normal response to emergencies such as fires or weather events.

Outside of this, if animals have breathing difficulties people should contact their veterinarian.

SITUATIONS VACANT

PRACTICE NURSE – PART-TIME - HOWICK HOUSE

Looking for a nurse who will be responsible for caring for patients, as well as maintaining accurate and current patient records. Working within a team of 4 nurses and 5 GPs. Must hold a current Annual Practising Certificate, Vaccinator Certificate, experience in IV Cannulation and CPR. A good working knowledge of Medtech32 would be preferred. Hours are negotiable.

Please send CV and covering letter to:
manager@howickhouse.co.nz



Professionals & Trades

BINS



PINK BINS

3, 4.5, 6 & 9 metre bins
3, 4.5 metre hardfill bins
We are reliable and we recycle!

Ph: 0800 PINK BINS (746-524)

Email: bins@pinkbins.co.nz www.pinkbins.co.nz

WHITE WASTE LTD Ph: 0800 720 710



Your Local Skip Bin Supplier

BOATING & MARINE

OVLOV MARINE PINE HARBOUR

09 536 5249
www.ovlov.co.nz

Sales and Service of outboard motors, inboards, sterndrives and IPS.

Situated in Pine Harbour Marina and mobile we can care for your vessel be it big or small.

Contact the team on 536 5249 or email on phil@ovlov.co.nz for service enquiries and partsph@ovlov.co.nz for spare parts.



BUILDER



New build | Reclad | Renovation

30 years experience, fast and reliable

ph: 021 474 180

www.thegoodbuilder.co.nz

ACCOMMODATION

WANTED TO RENT

Married couple looking for 1-2 bedroom rental, \$300-\$500/week incl free power/water. Long term, 10 years, Pine Harbour area. Ph Grace 021 080 33642.

BUY/SELL

JEWELLERY WANTED TO BUY

Old gold, rings, broken chains, unwanted jewellery for scrap etc. Paul Taylor Jewellers, Shop C7 Pohutukawa Coast Shopping Centre. Ph 536 4200

FIREWOOD FOR SALE

Firewood: ti tree and macrocarpa, ph 536 6026

FOR HIRE

BOBCAT/DIGGER HIRE

Excavations, driveways, landscaping, lawn laying, topsoil, metal supply, site clearing, rubbish removal, truck hire. Ph Grant 0274 758 468.

WOODSPLITTER

Woodsplitter with operators, ph 536 6026

PUBLIC NOTICES

CLEVEDON ANIMAL FARM

Family farm walks, pony rides and children's parties. Visit www.clevedonanimalfarm.co.nz or call Lynn on 292 9231.

WORK WANTED

HANDYMAN

You name it... renovations, DVS installation, gardening, retaining, fencing, landscaping, trellis, light building and maintenance work. Ph Gary on 021 90 30 20 or 536 6358.

MOWER AND CHAINSAW REPAIRS

All small engine repairs, mowers, ride-on mowers, chainsaws, weedtrimmers, & chain saw sharpening. No job too small. Free pick-up local area only. Ph: 536 5621 or mob 027 308 7777.

PAINTING/PLASTERING

Interior and exterior quality painting. Refs available. Ph: Gary 021 90 30 20 or 536 6358.

RENOVATIONS & MAINTENANCE, ALTERATIONS & IMPROVEMENTS

Undertaken by skilled team. We do everything from home & property maintenance including decks pergolas, bathrooms kitchens. Professional plaster &

paint service available. Skilled tradesmen, qualified builders available for your job. Ph. Mark on 0204 001 8401 for free quote.

READYLAWN/ LANDSCAPING

Specialising in ready-lawn, seeding, lawn levelling, turf cutting & landscaping. Locally based Ph: Adam on 022 015 2805.

RENOVATIONS

Bathrooms, kitchens, toilets - build, tile, glass, flooring, plaster and paint. Start to finish. Exp. builder. Refs avail. Ph Gary 021 90 30 20 or 536-6358. Oakes Build Landscape Maintenance. www.oakes.nz.

TCL CONSTRUCTION LTD

For all your building needs. New builds, renovations, decks, bathrooms etc. Licensed building practitioner Call Justin on 021460011, justin@tcl.org.nz, https://tclconstruction.co.nz/

WINDOW CLEANING

Windows in/out, exterior house wash, gutter clearing. Exp operator, Ph Keith at Panoramics on 0272 453 444 or 530 8136.

CROSSWORD ANSWERS - Across: 1. Pyromania, 7. Banjo, 9. Adieu, 11. Nag, 12. Scroll, 13. Assure, 14. Tense, 15. Titled, 17. Any, 20. Ark, 22. Cavort, 24. Avoid, 25. Active, 27. Temper, 29. Nut, 30. Inert, 31. Delta, 32. Newspaper. Down: 1. Pulsate, 2. Rear, 3. Addled, 4. Abuse, 5. Innuendo, 6. Bogey, 8. Jar, 9. Alter, 10. Ease, 16. Throttle, 18. Cadet, 19. Starter, 21. Even, 22. Citrus, 23. Handy, 24. Avian, 26. Cue, 28. Peep.

DENTAL

Great Smiles. Better Health.

At Anthony Hunt Dental we are proud to have been serving our community since 2011.

Leading the way using the latest techniques and technology, we create great smiles and better health for the whole family.



(09) 292 9071 smile@ahdental.co.nz
52 Papakura-Clevedon Road
Clevedon
www.ahdental.co.nz

ANTHONY HUNT
Dental
GREAT SMILES • BETTER HEALTH

Professionals & Trades



smile dental
giving you one more reason to smile

**QUALITY AFFORDABLE
FAMILY DENTISTRY**

***FREE dental
examinations**
*excl. xrays

129 Beachlands Rd, Beachlands, Auckland

www.smiledental.co.nz  09 302 0808

**Make the right
choice about
your dental care**

We are dedicated to your
personal well-being through
dental health



- Teeth whitening
- All ceramic tooth filling materials using CerecAC onmicam, 3D technology
- Permanent tooth replacements with dental implants
- For gum health and maintenance call our hygienists Shelley & Fernanda
- All aspects of general dentistry

FREE DENTISTRY IS AVAILABLE FOR ALL YOUNG ADULTS
Eligible from Year 9 until their 18th birthday Contact us today to learn more

Evening appointments available
Call us now on 530 8461 or email: info@whitforddental.co.nz

• Rick Parfitt B.D.S • Shelley Chadwick R.D.H.
Alex Lindsay B.D.S • Fernanda Flores R.D.H.
Whitford Village, Whitford

*Whitford Dental Group
Driving Dentistry to Excellence*

SanctuaryDental
All about your wellbeing



- Children's dentistry
- Tongue tie release – using water laser
- Safe mercury amalgam removal
- Orthodontic treatment without extracting teeth
- Interest free terms over 1 year

Sanctuary Dental
Unit 20, 2 Bishop Dunn Place, Botany 09 273 2173

Sanctuary Dental
24-34 Seddon Street, Pukekohe 09 238 4619

ELECTRICIANS

**Your Local Registered Electricians
Ph 536 6800**
For prompt professional electrical services with a smile

- www.awe.co.nz
- help@awe.co.nz
- free quotes



Providing electrical services on the Pohutukawa Coast & throughout Auckland

**Pohutukawa
ELECTRICAL**

No job too small - No job too big!
Fast, reliable service.
Qualified lighting designer

PH: 536-4076 **FREE Quotes**
MOB: 021 769 964 www.pohutukawaelectrical.co.nz



FUNERAL DIRECTORS

souly funerals.co.nz FREEPHONE 0800 47 68 59

**No Hidden Costs
PROFESSIONAL, AFFORDABLE, CARING**

Souly Cremation Packages from \$1745 inc.gst
Souly Burial Packages from \$1995 inc.gst *plot & interment

HEALTH & BEAUTY

renew beauty room Julie Green C.I.B.T.A.C.
P: 09 536 4484 | 021 175 1644
E: julie_ann21@hotmail.com
beauty therapy | make-up

- Blend Method Electrolysis • Facials using Sothy's products
- Waxing • Lash/Brow Tinting • Manicures & Pedicures • Massage
- Make-up for Weddings or Special Occasion using M.A.C. Cosmetics
- GIFT VOUCHERS AVAILABLE • APPOINTMENTS ONLY

LAWNS & LANDSCAPING

R & R Garden Services
We do the hard yards for you

Email: randrgardenservice@gmail.com

Your local lawn and garden specialist
Call Richie: 021917332

Qualified Landscape design and Implementation
Call Roanne: 0272528183

Kathryn Anderson
LANDSCAPE ARCHITECT
BLA (Hons), associate NZILA Qualifications

M: 021 263 4101
E: kath@landscapestudio.co.nz

The LandScape Studio

Landscape designs that suit your budget & lifestyle

MECHANICAL REPAIRS

MARAETAI AUTOMOTIVE

All Makes & Model s | All Types of Repairs
Petrol - Diesel - European Vehicles - Loan Cars

- Servicing • WOF • Brakes • Clutches • Wheel Alignments
- Tyres • Transmission Services • Batteries • Welding
- Cambelts • CV Joints • Auto Electrical Repairs

131 Maraetai Drive, Maraetai Ph: 536 6542

ALL WORK GUARANTEED
HOURS: Mon - Fri: 8am-5pm

OPTOMETRISTS

HOWICK VILLAGE OPTOMETRISTS

phone 534 8716
www.howickoptometrists.co.nz

If you would like to advertise in this
section please phone
021 026 14467 or
email: advertising@pctimes.co.nz

PLUMBING

Ford Plumbing
Certifying Craftsman Plumber

New Homes - Renovations - Water Filters & Pumps
Hot Water Cylinders - Repairs Call Mark on...

www.fordplumbing.co.nz **536 5698**

DYNAMO PLUMBING
MAINTENANCE SPECIALIST

24 hours/7days A WEEK • NZ CERTIFIED PLUMBER
LOCALLY OWNED & OPERATED

535 0439 • 021 068 3818
dynamoplumbing.ltd@gmail.com

STAINLESS FABRICATIONS

DARRYL SMITH
STAINLESS FABRICATIONS LTD

- Alloy Boat Repairs
- Alterations & Custom-made Accessories a Specialty, Including Architectural Alloy, Stainless Steel & Steel Fabrications

Ph: 266 8774 or Fax: 267 1104
Email: darrylsmithstain@actrix.co.nz

TREE SERVICES

CALL NATHAN 021 196 6509

CHIPPING
LAND CLEARING
HEDGE TRIMMING

COASTAL CUTTERS
TREE CARE ON THE COAST

TREE PRUNING
TREE REMOVAL
STUMP GRINDING

FIND US ON FACEBOOK coastalcutters@hotmail.com

Limb to Limb tree care Free Quotes

Hedge Trimming • Tree Pruning • Tree Removal
Stump Grinding • Mulching • Planting

www.limbtolimb.co.nz
Ph: 0800 PRUNE IT or 021 259 0987

DS TREES LTD

Land Clearing
Tree Maintenance
Tree removal
Stump Grinding
Hedge Care

Phone Doug
021537171 • 09 5378595
info@dstrees.co.nz
www.dstrees.co.nz

VETERINARY

Franklin Vets Beachlands

1/43 Kouka Road,
Pohutukawa Coast
Shopping Centre
538 0010 • beachlands@fvs.co.nz
www.franklinvets.co.nz

OPEN HOURS
Mon-Friday 8am-6pm
Saturday 9am-3pm



BUSINESS LISTINGS

List your business here to be seen by more than 6,000 homes each week
A 6-month, single line listing costs just \$150+gst
EMAIL: INFO@PCTIMES.CO.NZ | PHONE: 09 536 5715

ACCOUNTING SERVICES		
Probiz Systems Ltd, Sharon Bramley	530 8036	
Ian McLennan, CA www.iwm.co.nz	536 6715	
Diane Myers CA, diane@myersca.co.nz	292 9470	
beanies2U, call Tanya chartered accountant	027 5533 570.	
Pat Callinan, karenh@patcallinan.co.nz	533 8420	
Hills & Associates Ltd CA, Randall Hills	530 9207	
Business Allsorts, MYOB & Xero Experts	536 5850	
Peat Johnson Murray	869 2091	
Complete Bookkeeping Solutions	021 947 793	

AERIALS, TV & HOME THEATRE		
Smart Home Technology. Freeview, aerials, phone jacks, TV outlets, home theatre, new home prewire.		
Phone Sunny	0800 786 266 or 027 2841 325	
Auckland Wide Electrical	536 6800, 021 998 665	
Digital Solutions Ltd: New & existing home TV setup, UHF & Sky distribution, Data/WiFi improvement, TV surround sound, Security alarms and cameras. Call Rodger:		
	021 659 677	

AGGREGATES		
Beachlands Building & Hire Centre	536 6567	
Manukau Quarry Ltd 33 Ha Cresent Wiri Manukau	0800-767-552	

ALUMINUM WINDOWS:		
www.windowrenovations.co.nz		
Repairs and Replacements	021 297 2320	

APPLIANCE SERVICING		
Axial appliance servicing Service@axial.co.nz	573 0877	
Appliance Wizard Ltd Ph Paul	0275 784 226	

ARBORIST		
Limb to Limb Tree Care	021 259 0987	

ARCHITECTS		
Peter Diprose www.diprose.co.nz	530 9065 or 021 125 1498	

ARCHITECTURAL PLAN & DESIGN		
Ross J Willoughby	530 9358	
Brian Duncan brian@egraph.co.nz	021 998 935	

AUTO ELECTRICIAN		
Mobile Auto & Marine	0800 662 352	

BATHROOM RENOVATIONS		
Complete design and build by top tradesman, 10 year guarantee call Allan		
	0210 290 3978	

BEACHLANDS STORES		
Beachlands Building & Hire Centre		
- hardware, hire and garden centre	536 6567	

BED & BREAKFAST		
Brookwood Lodge, Beachlands.	536 6975 or 0274 796 453	

BEEKEEPING		
The Bee Shop	021 268 2564	

BLIND SERVICES		
Blindworks - For all New Blinds - Plus Blind Cleaning and Repairs		
www.blindworks.co.nz	0800 999 229	

BOOKKEEPERS		
Business Allsorts, MYOB & Xero Experts	536 5850	

BUILDERS		
Bryant Builders Ltd	0274 935 507 or 2928 777	
Homing Instincts Ltd, ph Gareth Price	021 618 181 or 536 6422	
Michael Nootebos	536 6628 or 0274 799 776	
Superior Developments Ltd	021 079 2589	
Impression Builders Ltd	021 393 140	
or dean@impressionbuilders.co.nz		

BUILDERS' SUPPLIES		
Morton Timber Co. Clevedon	292 8656	

CAR VALET		
John's Car Valet Services	536 4324 or 021 825 381	

CITIZENS ADVICE BUREAU		
Weekly at Beachands or Maraetai Libraries	576 8331	

COMPUTER SERVICES		
Andrew WhatWhyWhen.com	0220 HELP PC or 536 6514	

CONCRETE SERVICES		
Bellingham Concrete Ltd	Contact Dean on 0274-533-059	

DENTISTS		
Sanctuary Dental	273 2173	
Whitford Dental Group	530 8461 or 530 8271	
- Dr Rick Parfitt & Dr Antonia Nagel		
- Hygienist - Shelley Chadwick	530 8461, 530 8271	
Anthony Hunt Dental Ltd, Dr Anthony Hunt, Clevedon	292 9071	
Marina Dentists Pine Harbour	536 4361	
Smile Dental Beachlands		
- Your local dentist. New patients welcome.	022 8888 171	
- Free examination since 1996	09 302 0808	
www.smiledental.co.nz	0800 4 smile	

DIESEL MECHANIC		
Mobile service: trucks, machinery, light commercials and trailers. Ph Craig Waters		
	021 613 152	

DIGGER & TRUCK HIRE		
The Little Digger	027 278 0335 or 536 4424	
Digger Landscapes www.diggerlandscapes.nz	021 415 832	

DOCTORS		
Beachlands Medical Centre	536 6006	

DOG WALKING		
Happy Hairy Hounds, Caroline	021 040 5780	

DRAINLAYERS		
Vibe Earthmovers and Drainage	call Vincent 0272 225 377	

DRILLING		
Drillforce - water bores, diving, pump advice	09 267 9100	

EARLY CHILDHOOD EDUCATION		
B/M Playcentre Mon-Fri. 9am-12	536 6015	
in Beachlands School grounds		
Whitford Early Learning Centre	530 8726	
Clevedon Kidz Early Childhood Centre	2928 358	
BestStart Coastal	536 6737	
BestStart Sunkist Bay Kindy	536 5313	
Stems From Home Professional In-Home Child Care	536 7103	
Pikopiko Learning Centre, Whitford	530 8697	

EARTH MOVING CONTRACTORS		
Henri & Lynda Habraken	0274 961 472, 536 6806	
www.brookbycontracting.co.nz	3.5t w Augers, truck hire/cartage	
	530 9290 or 027 530 9290	
Riordan Contracting	09 530 9429 OR 027 430 9429	
Glenn Keane Ltd: diggers and truck hire/cartage	0274 731 403	
Superior Developments Ltd	021 079 2589	
Terroir Ltd	021 490 173	

EDITING SERVICES		
Call experienced writers/editors Fran or Duncan on	021 536 571	

ELECTRICIANS		
Auckland Electrical & Pump Services	536 4074,027 4741 579	
Auckland Wide Electrical	536 6800, 021 998 665	
Pohutukawa Electrical	536 4076, mob 021 769 964	
Positive Electrical Services	021 801 606	
ASAP Electrical, Chris O'Donnell	0274 15 30 15	
Go Electrical, Grant O'Halloran (Beachlands)	021 987 228	

ENGINEERS - CIVIL/ENVIRONMENTAL/STRUCTURAL		
CivilPlan Consultants Ltd	222 2445	

FENCING CONTRACTORS		
Craig McLeod	027 292 5844	
White Fencing	2928 064, 0274 957 868	
~ rural fencing, retaining walls	www.whitefencing.co.nz	

FIREWOOD		
Ignition Firewood	0800 WOOD NOW	

FLOORING		
All About Floors, Darrel	570 5300, 021 688 875	
Nicks Floor Sanding	536 6916, Mobile 021 875 456	

FLORIST		
Clevedon Flowers, www.clevedonflowers.co.nz	292 9540	
Harbour Rose Florist: Sandra	021 024 35299	

FUNERAL DIRECTORS		
Resthaven Funeral Services		
Rachel Benns & Raewyn Proctor	533 7493, 267 2530	
Ensom Funerals (John Ensom, Jo Nevin)	266 6646 or 524 6765	
Fountains Funeral Directors & Monumentalists -		
Papakura, Franklin and Manurewa	298 2957 or 266 6177	
Howick Funeral Home Robert Johnstone - Mark Rowley	534 7300	
Souly Funerals Beachlands	0800 47 68 59	

GARAGE DOORS		
Repairs & Service, Metro Garage Doors	263 6608	

GEOTECHNICAL SERVICES		
Fraser Thomas Ltd	278 7078	

GIBSTOPPING		
Wayne Mackenzie	021 882 276 or ah 530 9031	
Greg Brown	021 067 6104, ah 536 5989	
specialistlinings.co.nz	We fix, stop, and paint	0800 54 64 64
Gib stopping & painting - Tony	0274 966 394 or 536 6477	

GLASS AND GLAZING		
Manurewa Glass	266 7794	
Howick Glass	535 4180	

GUTTER CLEANING		
Skyhigh Vacuum Services, dave@skyhigh.nz	021 951 719	

HAIRDRESSING		
Spirit Hair-Makeup-SprayTanning	021 1630 174	
Hair Do's @ Maraetai ph Denise	536 4571	
Cooper Hairdressing, 16 Te Pene Rd, Maraetai	027 329 1781	
Goldilocks Hair Care Professionals		
Pohutukawa Shopping Centre	536 5805	

HANDYMAN SERVICES		
Local Handyman:	536 5050 or 021 156 7370	
Oakes Build Landscape Maintenance	www.oakes.nz	021 903 020
Lifestyle Property Services Ltd	0272 533 336	

HEAT PUMPS		
Positive Electrical Services	021 801 606	

HIRE & GARDEN CENTRE		
Beachlands Building & Hire Centre	536 6567	

JEWELLER		
Paul Taylor Manufacturing Jewellers	536 4200	
Repairs/Remodelling/Valuations/Insurance Replacements		
Shop C/7, 129 Beachlands Rd, Pohutukawa Coast Shopping Centre		

KITCHENS		
La Bella Kitchens Ltd, www.labellakitchens.co.nz	530 9092	
Kitchen Craft Ltd, Ph Warren	09 274 4221	
For Sizzling Kitchen Design & Cabinetry	www.kitchencraft.co.nz	

KITCHENS (CONTINUED)		
Inhouse Design & Concepts Ltd	www.inhousedesigns.co.nz	
Ph Brendan	021 272 1974, 536 4625	
Gold Kitchens Ltd, www.goldkitchens.co.nz,		
0508 GO GOLD or ph Jordan Dale:	021 885 853	

KNIFE AND GARDEN TOOL SHARPENING		
Ph Chris Baird	536 6181 or 021 536 618	

LANDSCAPING		
Eastside Landscapes	021 484 158	
Kai Gardens	Karen - 021 046 1463	

LAUNDROMAT		
7 DAYS, at GAS Maraetai, 131 Maraetai Drive, Maraetai	536 4218	

LAWNMOWING & GARDENING SERVICES		
Greenacres - Stephen Howe	292 4165 or 021 2266 753	
Prolawns (Beachlands based) Shane	536 4351 or 021 746 887	
R&R Garden Services Richie:	021 917 332, Roanne: 027 252 8183	

LAWNMOWERS SALES/SERVICE/REPAIRS		
B'nds/M'tai mower/chainsaw repairs	536 5621 or 027 308 7777	

LEGAL SERVICES		
Swayne McDonald & Co	265 2700	
(Beachlands/Maraetai/Whitford)		
John Burton - Maraetai & Beachlands	536 5279 or 299 7780	
Sutcliffe Matson Law	279 8351 or 021 327 030	
Mobile lawyers available after hours		
James Donovan, 10/42 Kouka Rd, Beachlands	869 4565	

LOCKSMITHS		
Local Locksmith - Tony+	536 5050 or 021 156 7370	
Armstrong Smarter Security	0800 506 111	

LPG SUPPLIERS		
Matagas	0800 954 427	

MARINE AND BOATING		
Top Catch	536 5157	
Ovlov Marine Pine Harbour LTD	536 5249	

MECHANICAL REPAIRS		
Clevedon Automotive Ltd	292 8441	0274 743 918
Maraetai Automotive	536 6542	
Pohutukawa Motors, 57 Third View Ave, Beachlands	536 6664	
Garaway Autos	022 395 6185	
Luke's Garage Ltd	09 218 6442 / 022 301 0412	

MIRRORS		
Howick Glass	535 4180	

OUTBOARD REPAIRS/ MARINE ENGINEERING		
Eastern Marine ~ Outboard, Petrol & Diesel Motors	536 6252	

PAINTERS & DECORATORS		
DTS Wright Contracting Ltd	536 5239 or 021 40 1094	
East Auckland Painting Ltd	027 619 2619	
specialistlinings.co.nz	We fix, stop, and paint	0800 54 64 64

PEST CONTROL		
Coastal Pest Solutions (including rats, rabbits,possums, wild cats, pest birds, wasps & bees)		
	536 6020 or 0273 932 125	
Professional Pest Control	536 6690 or 021 078 3622	

PET ACCOMMODATION		
Clevedon Kennels and Cattery	292 8789	
Fairfield Pet Lodge, Clevedon	292 8852	
Pets at Whitford Spa and Stay (PAWSS)	530 8860	

PHARMACIES		
Unichem Beachlands Pharmacy	536 6500, fx 536 6590	
Pohutukawa Coast Pharmacy	536 6747, fax 536 6742	

PHYSIOTHERAPIST		
Beachlands Physio beachlandsphysio.co.nz	09 222 4120	
Ultimate Physio 739 Chapel Road, Botany	272 9294	

PLASTERING SERVICES		
Solid Plastering, Bruce Parsons	021 981 812	

PLUMBERS		
Dynamo Plumbing	535 0439 or 021 068 3818	
BF Brown Plumbing & Drainlaying	0800 477 455	
Complete Plumbing Services Ltd	0800 1000 33	

PLUMBERS & GASFITTERS		
Ashby Plumbing & Gas	292 2445 or 0272 553 499	

PROJECT MANAGEMENT/RESOURCE CONSENTS		
Stephen Mason	021 490 173	

PROPERTY MANAGEMENT
